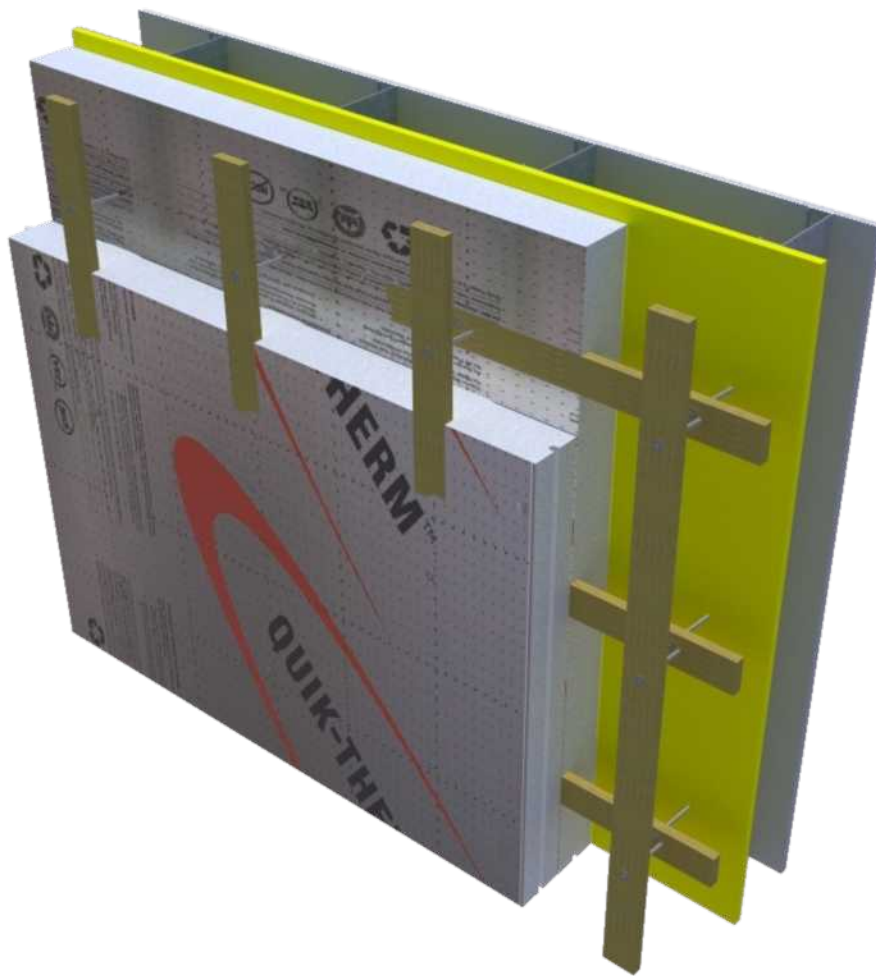


# Quik-Therm Matrix Wall / Roof System



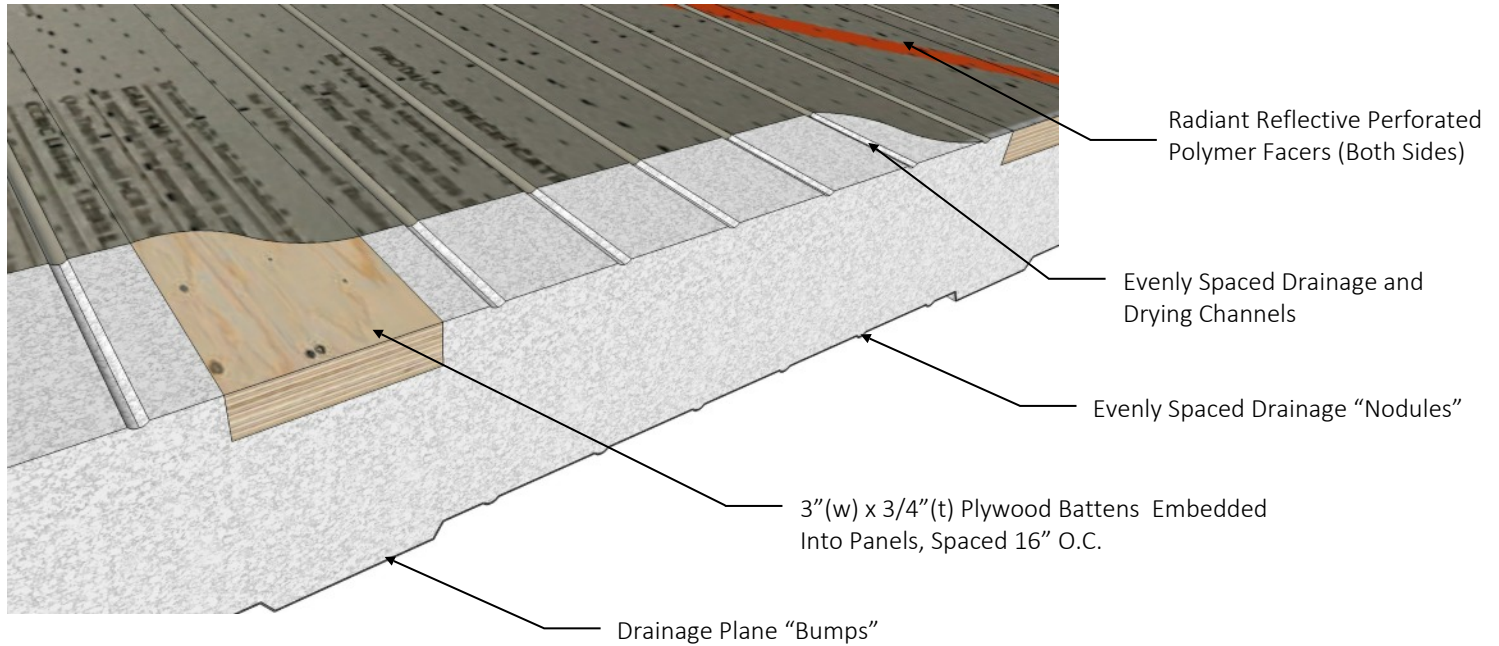
Tested By Canadian Accredited Laboratories  
Supported By Building Science Engineering

# QUIK-THERM AIR DRY CONNECT (ADC)

Quik-Therm Air Dry Connect (ADC): Type II closed cell expanded polystyrene (EPS) with perforated metalized polymer facers with embedded 3/4" x 3" x 8' plywood furring strips. Backside of panel incorporates drainage and drying channels that occupy 75% of the panel surface area. Topside of panel incorporates micro drainage and drying channels, plywood furring strips located 16" on centre, and hermetically sealed in place.

Overall dimensions: 4' (w) x 8' (L) x 2"-6" (T)

R-Value: 4.18 / inch



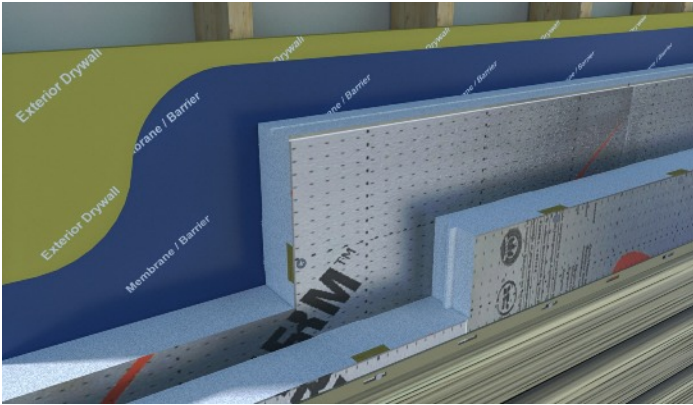
Characteristic	Units	Nominal Value	Test Method
Dimensional Stability - Maximum Linear Change	%	1.5	ASTM D2126
Length Tolerance	mm (in)	±3.2 (±0.125)	—
Width Tolerance	mm (in)	±1.6 (±.063)	—
Nominal R-Value	—	4.18	ASTM C518
Water Vapour Transmission	Perms (ng)	>1.0 (87)	ASTM E96
Density (Type 2)	kg/m <sup>3</sup> (lbs/ft <sup>3</sup> )	23 (1.4)	ASTM D1622-03
Compressive Strength (Type 2)	kPa (psi)	136 (19.7)	ASTM D1621-04a
Long Term Thermal Resistance (LTTR)	Thermal Resistance Remains Stable Over Life of Service		
Flexural Strength (Type 2)	kPa (psi)	257 (37.3)	ASTM C203-05
Limiting Oxygen Index	%	26	ASTM D2863-97
Flame Spread	—	250	CAN/ULC - S102.2
Smoke Developed	—	410	CAN/ULC - S102.2

*The information herein is based upon data considered accurate. Quik-Therm Insulation Solutions Inc. does not assume any responsibility for any misrepresentation or assumptions the reader may formulate.*

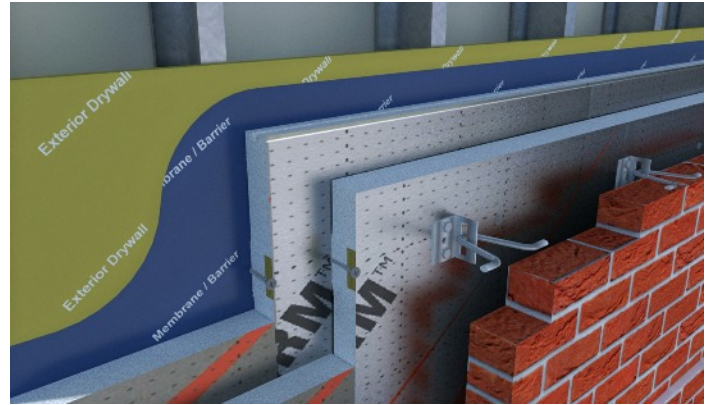
# QUIK-THERM MATRIX WALL / ROOF SYSTEM

**WHAT IS MATRIX?** A COMBINATION OF TWO OR MORE LAYERS OF QUIK-THERM ADC PANELS

## Typical Quik-Therm Matrix Wall Systems

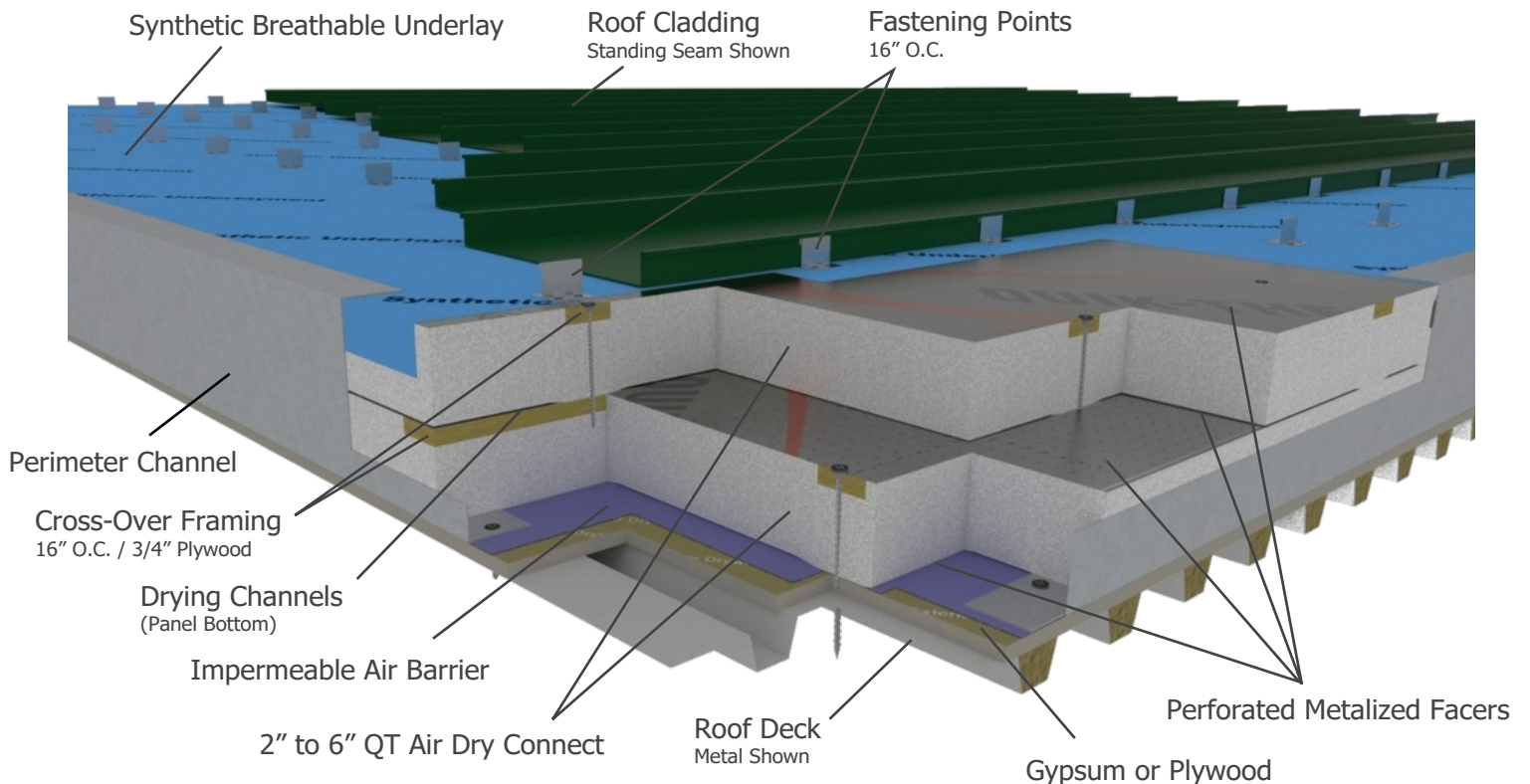


Horizontal/Vertical Orientation - Horizontal Cladding

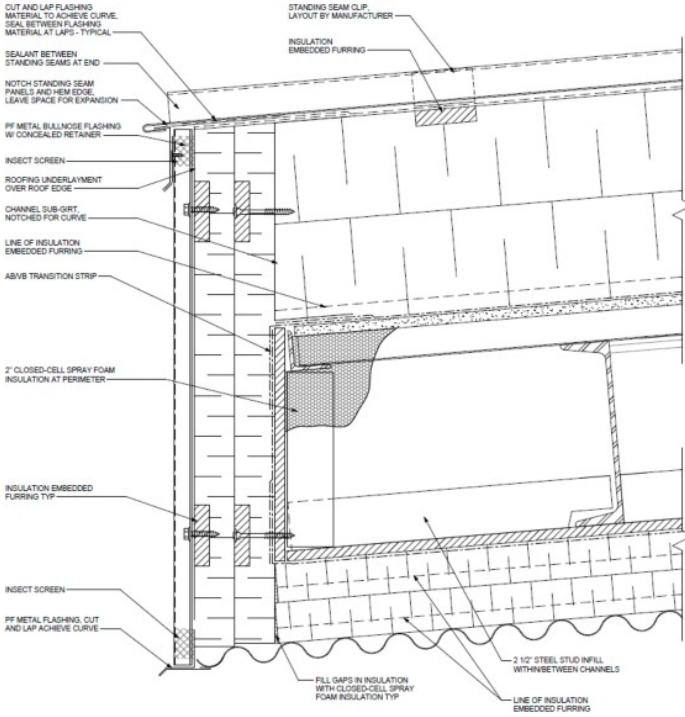


Horizontal Orientation - Brick

## Typical Quik-Therm Matrix Roof System



# RECOMMENDED READING



R-VALUE TABLE (R-Value / RSI)

Thickness	Nominal	Effective
4"	R-16.8 (2.94)	R-19.0 (3.35)
6"	R-25.1 (4.42)	R-27.0 (4.76)
8"	R33.4 (5.89)	R-34.9 (6.14)
10"	R-41.8 (7.36)	R-42.5 (7.49)
12"	R-50.2 (8.83)	R-50.2 (8.83)

Refer to QR Code Quik-Therm Thermal Bridging Analysis for Report For Three or More Layers, Contact Quik-Therm Insulation Solutions



QUIK-THERM MATRIX  
INSTALL GUIDE



QUIK-THERM MATRIX  
THERMAL BRIDGING  
ANALYSIS



QUIK-THERM MATRIX  
WIND UP-LIFT  
ENGINEERING REPORT



QUIK-THERM MATRIX  
COST ANALYSIS



QUIK-THERM MATRIX  
ENERGY ANALYSIS



QUIK-THERM MATRIX  
DETAILS / ENGINEERING



Quik-Therm Insulation Solutions Inc.

quiktherm.com

(204) 736-3012

