



Quik-Therm Insulation Solutions Inc.

# ENVELOPE DETAILS

## Quik-Therm Air Dry Connect (ADC)

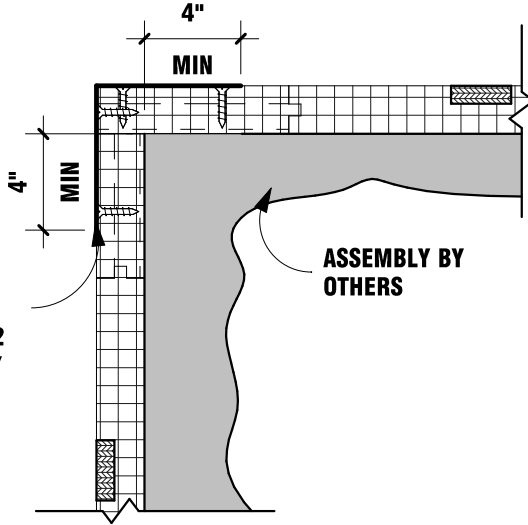
quiktherm.com (888) 735-3012 (204) 736-3012

# QT-ADC-1

## OUTSIDE CORNER PLAN VIEW

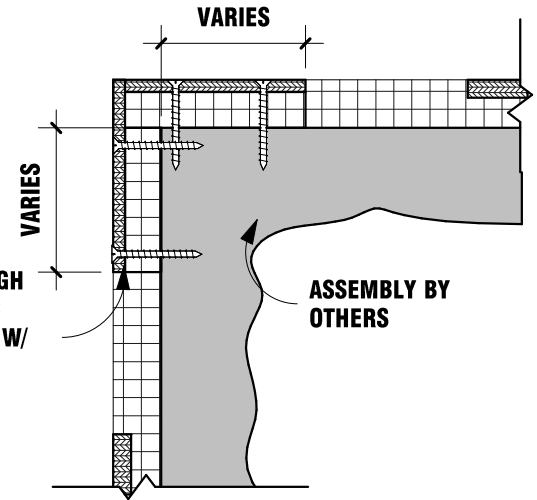
1 1/2" = 1'-0"

22Ga. GALVANIZED METAL BREAKSHAPE SECURED TO HORIZONTAL ADC FURRING STRIPS W/ 2 FASTENERS AT EVERY FURRING STRIP



### OPTION #1

1/2" PLYWOOD SECURED THROUGH HORIZONTAL ADC FURRING STRIPS W/ 2 FASTENERS AT EVERY FURRING STRIP



### OPTION #2

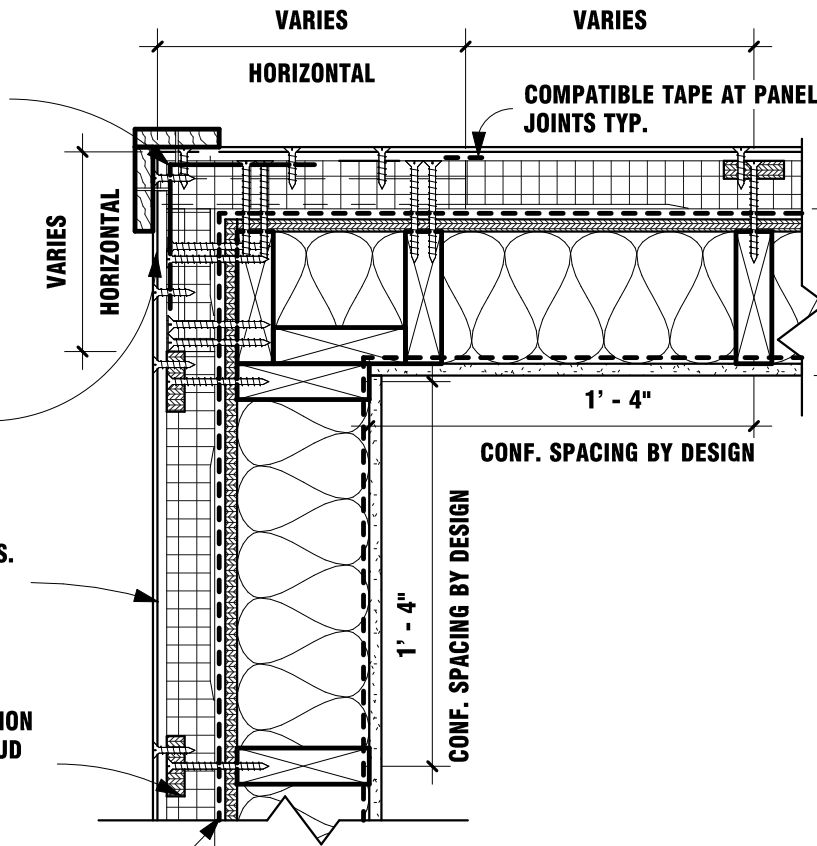
SEE ABOVE OUTSIDE CORNER OPTIONS

EXTERIOR VENEER TRIM AS PER DESIGN BY OTHERS

EXTERIOR VENEER AS PER DESIGN BY OTHERS. SECURE TO QUIK-THERM™ INTEGRATED FURRING

PERFORATED QUIK-THERM™ ADC INSULATION SECURED TO WOOD STUD FRAMING. FASTENER SPACING TO SUITE APPLICATION.

AIR BARRIER AS PER DESIGN BY OTHERS



WALL ASSEMBLY AS PER DESIGN BY OTHERS

WALL ASSEMBLY AS PER DESIGN BY OTHERS

# QT-ADC OUTSIDE CORNER DETAIL



Quik-Therm Insulation Solutions Inc.

# ENVELOPE DETAILS

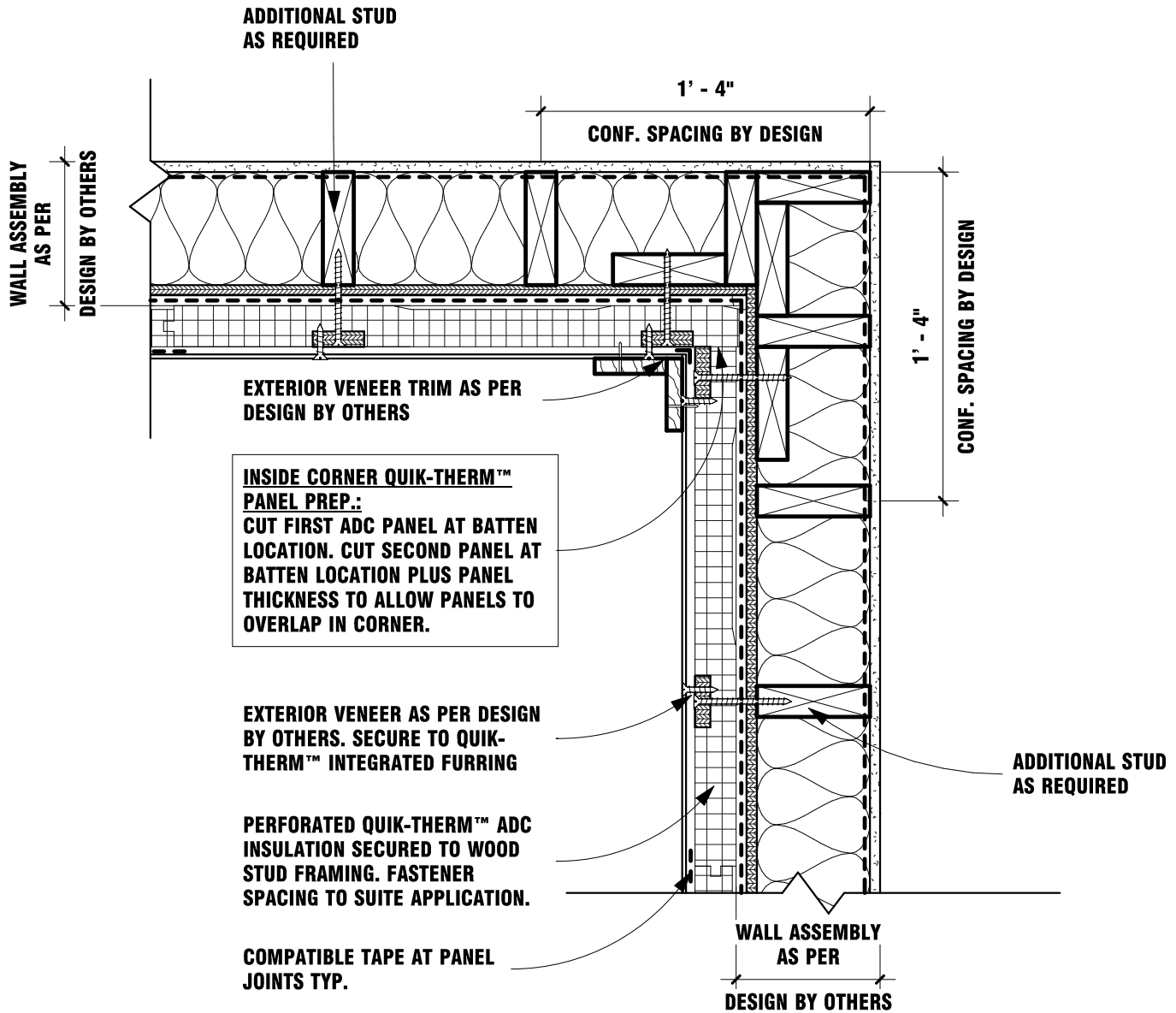
## Quik-Therm Air Dry Connect (ADC)

quiktherm.com (888) 735-3012 (204) 736-3012

# QT-ADC-2

## INSIDE CORNER PLAN VIEW

1 1/2" = 1'-0"



# QT-ADC INSIDE CORNER DETAIL



Quik-Therm Insulation Solutions Inc.

# ENVELOPE DETAILS

## Quik-Therm Air Dry Connect (ADC)

quiktherm.com (888) 735-3012 (204) 736-3012

# QT-ADC-3

## TOP AND BOTTOM WALL SECTION VIEW

1 1/2" = 1'-0"

ARREST THERMAL CONVECTION. APPLY A HORIZONTAL BEAD OF SPRAY FOAM OR COMPATIBLE SEALANT (MINIMUM 1/2" THICK) TO TOP OF QUIK-THERM™ ADC PANELS (TOP OF WALLS & UNDERSIDE OF GLAZING SILLS).

ROOF ASSEMBLY AS PER DESIGN BY OTHERS

PERFORATED QUIK-THERM™ ADC INSULATION SECURED TO WOOD STUD FRAMING. FASTENER SPACING TO SUITE APPLICATION.

WALL ASSEMBLY AS PER DESIGN BY OTHERS

EXTERIOR VENEER AS PER DESIGN BY OTHERS. SECURE TO QUIK-THERM™ INTEGRATED FURRING

COMPATIBLE TAPE AT PANEL JOINTS TYP.

FLOOR SYSTEM AS PER DESIGN BY OTHERS

LAP AIR BARRIER OVER SELF ADHERED WATERPROOF MEMBRANE

LAP SELF ADHERED WATERPROOF MEMBRANE OVER PREFINISHED METAL DRIP EDGE

CLOSED CELL SPRAY FOAM INSULATION AS PER DESIGN BY OTHERS

SILL PLATE WITH FOAM GASKET ON FOUNDATION AS PER DESIGN BY OTHERS

# QT-ADC TOP & BTM OF WALL DETAIL



Quik-Therm Insulation Solutions Inc.

# ENVELOPE DETAILS

## Quik-Therm Air Dry Connect (ADC)

quiktherm.com (888) 735-3012 (204) 736-3012

# QT-ADC-4

## NAIL ON FLANGE GLAZING SECTION VIEW

1 1/2" = 1'-0"

### INTERIOR

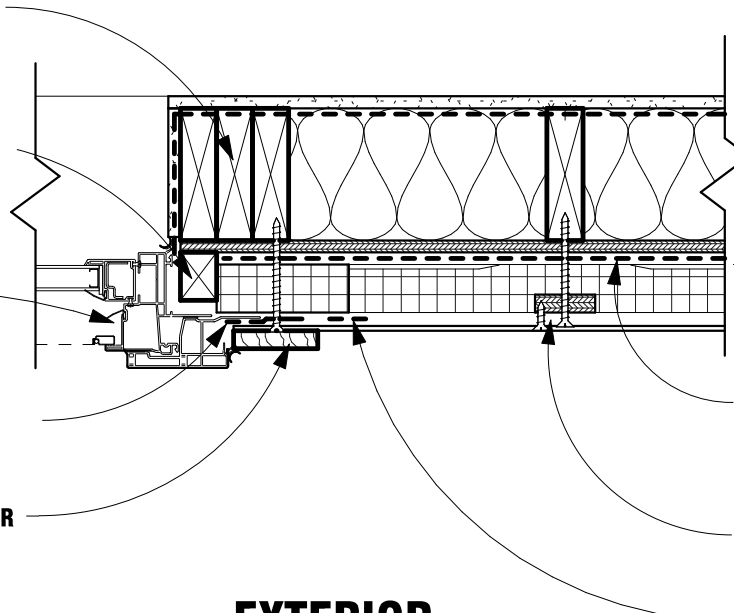
OPENING CRIPPLE STUDS AS PER DESIGN BY OTHERS

2x FRAMING BUILD OUT ALL AROUND AS REQUIRED TO SUPPORT GLAZING ASSEMBLY

WINDOW ASSEMBLY AS PER DESIGN BY OTHERS

COMPATIBLE TAPE OVER INSULATION PANEL AND FENESTRATION FRAMING

EXTERIOR VENEER TRIM AS PER DESIGN BY OTHERS



WALL ASSEMBLY AS PER DESIGN BY OTHERS

PERFORATED QUIK-THERM™ ADC INSULATION SECURED TO WOOD STUD FRAMING. FASTENER SPACING TO SUITE APPLICATION.

EXTERIOR VENEER AS PER DESIGN BY OTHERS. SECURE TO QUIK-THERM™ INTEGRATED FURRING

COMPATIBLE TAPE AT PANEL JOINTS TYP.

### EXTERIOR

NOTE: 2x BUILDOUT, AS INDICATED, REQUIRED AT NAIL ON FLANGE WINDOWS. STORE-FRONT OR CURTAINWALL GLAZING SYSTEMS DO NOT REQUIRE 2x BUILDOUT. ALIGN THOSE WINDOWS WITH EXTERIOR FACE OF WALL ASSEMBLY SHEATHING. REFER TO DESIGN GUIDANCE BY DESIGN PROFESSIONAL

# QT-ADC GLAZING JAMB DETAIL



Quik-Therm Insulation Solutions Inc.

# ENVELOPE DETAILS

## Quik-Therm Air Dry Connect (ADC)

quiktherm.com (888) 735-3012 (204) 736-3012

# QT-ADC-5

## NAIL ON FLANGE GLAZING PLAN VIEW

1 1/2" = 1'-0"

**EXTERIOR**

PERFORATED QUIK-THERM™ ADC INSULATION SECURED TO WOOD STUD FRAMING. FASTENER SPACING TO SUITE APPLICATION.

EXTERIOR VENEER AS PER DESIGN BY OTHERS. SECURE TO QUIK-THERM™ INTEGRATED FURRING  
COMPATIBLE TAPE AT PANEL JOINTS

LAP AIR BARRIER OVER SELF ADHERED WATERPROOF MEMBRANE

EXTERIOR VENEER TRIM AS PER DESIGN BY OTHERS

RIGID INSULATION BETWEEN PREFINISHED METAL DRIP EDGE AND GLAZING VENEER FRAME AS PER GLAZING SPECIFICATION

SELF ADHERED WATER PROOF MEMBRANE OVER GLAZING FLANGE

WALL ASSEMBLY AS PER DESIGN BY OTHERS

**INTERIOR**

LAP SELF ADHERED WATERPROOF MEMBRANE OVER PREFINISHED METAL DRIP EDGE

OPENING HEADER AS PER DESIGN BY OTHERS

2x FRAMING BUILD OUT ALL AROUND AS REQUIRED TO SUPPORT GLAZING ASSEMBLY

WINDOW ASSEMBLY AS PER DESIGN BY OTHERS

**EXTERIOR**

SELF ADHERED WATER PROOF MEMBRANE AT GLAZING SILL

2x FRAMING BUILD OUT ALL AROUND AS REQUIRED TO SUPPORT GLAZING ASSEMBLY

PREFINISHED METAL DRIP EDGE OVER GLAZING SILL

EXTERIOR VENEER TRIM AS PER DESIGN BY OTHERS

ARREST THERMAL CONVECTION. APPLY A HORIZONTAL BEAD OF SPRAY FOAM OR COMPATIBLE SEALANT (MINIMUM 1/2" THICK) TO TOP OF QUIK-THERM™ ADC PANELS (TOP OF WALLS & UNDERSIDE OF GLAZING SILLS).

EXTERIOR VENEER AS PER DESIGN BY OTHERS. SECURE TO QUIK-THERM™ INTEGRATED FURRING

PERFORATED QUIK-THERM™ ADC INSULATION SECURED TO WOOD STUD FRAMING. FASTENER SPACING TO SUITE APPLICATION.

WALL ASSEMBLY AS PER DESIGN BY OTHERS

**INTERIOR**

GLAZING BACKSTOP ANGLE DAM AS PER DESIGN BY OTHERS

COMPATIBLE TAPE AT PANEL JOINTS

**NOTE:** 2x BUILDOUT, AS INDICATED, REQUIRED AT NAIL ON FLANGE WINDOWS. STORE-FRONT OR CURTAINWALL GLAZING SYSTEMS DO NOT REQUIRE 2x BUILDOUT. ALIGN THOSE WINDOWS WITH EXTERIOR FACE OF WALL ASSEMBLY SHEATHING. REFER TO DESIGN GUIDANCE BY DESIGN PROFESSIONAL

# QT-ADC GLAZING HEAD AND SILL DETAIL



Quik-Therm Insulation Solutions Inc.

# ENVELOPE DETAILS

## Quik-Therm Air Dry Connect (ADC)

quiktherm.com (888) 735-3012 (204) 736-3012

# QT-ADC-6

## DOOR HEAD/JAMB DETAIL PLAN & SECTION VIEW

1 1/2" = 1'-0"

**EXTERIOR**

PERFORATED QUIK-THERM™ ADC INSULATION SECURED TO WOOD STUD FRAMING. FASTENER SPACING TO SUITE APPLICATION.

EXTERIOR VENEER AS PER DESIGN BY OTHERS. SECURE TO QUIK-THERM™ INTEGRATED FURRING

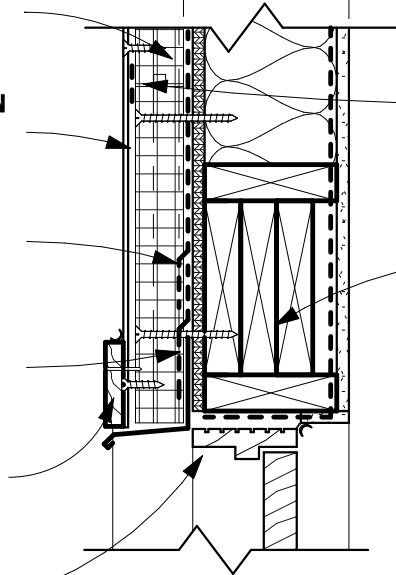
LAP AIR BARRIER OVER SELF ADHERED WATERPROOF MEMBRANE

LAP SELF ADHERED WATERPROOF MEMBRANE OVER PREFINISHED METAL DRIP EDGE

EXTERIOR VENEER TRIM AS PER DESIGN BY OTHERS

DOOR FRAME AS PER DESIGN BY OTHERS

WALL ASSEMBLY  
AS PER  
DESIGN BY OTHERS



COMPATIBLE TAPE AT PANEL JOINTS

OPENING HEADER AS PER DESIGN BY OTHERS

**INTERIOR**

### SECTION VIEW

**INTERIOR**

OPENING CRIPPLE STUDS AS PER DESIGN BY OTHERS

WALL ASSEMBLY  
AS PER  
DESIGN BY OTHERS

SELF ADHERED WATERPROOF MEMBRANE AROUND OPENING

EXTERIOR VENEER TRIM AS PER DESIGN BY OTHERS

### PLAN VIEW

PERFORATED QUIK-THERM™ ADC INSULATION SECURED TO WOOD STUD FRAMING. FASTENER SPACING TO SUITE APPLICATION.

EXTERIOR VENEER AS PER DESIGN BY OTHERS. SECURE TO QUIK-THERM™ INTEGRATED FURRING

**EXTERIOR**

# QT-ADC DOOR HEAD & JAMB DETAIL



Quik-Therm Insulation Solutions Inc.

# ENVELOPE DETAILS

## Quik-Therm Air Dry Connect (ADC)

quiktherm.com (888) 735-3012 (204) 736-3012

# QT-ADC-7

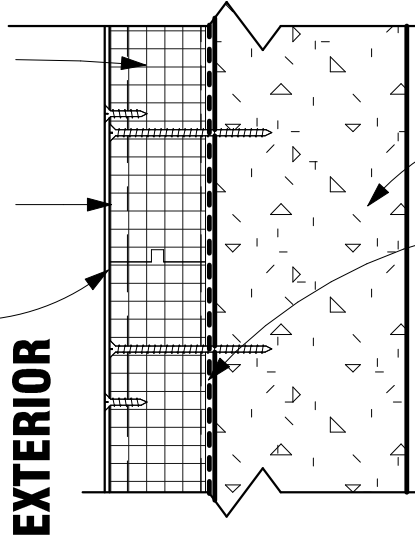
## CONCRETE ATTACHMENTS PLAN & SECTION VIEW

1 1/2" = 1'-0"

PERFORATED QUIK-THERM™ ADC INSULATION SECURED TO CONCRETE SUBSTRATE. FASTENER SPACING TO SUITE APPLICATION.

EXTERIOR VENEER AS PER DESIGN BY OTHERS. SECURE TO QUIK-THERM™ INTEGRATED FURRING

COMPATIBLE TAPE AT JOINTS



CONCRETE SUBSTRATE AS PER DESIGN BY OTHERS

SELF ADHERED WATERPROOF MEMBRANE TO SUBSTRATE

EXTERIOR

INTERIOR

### EXTERIOR APPLICATION

NON-PERFORATED QUIK-THERM™ ADC INSULATION SECURED TO CONCRETE SUBSTRATE. FASTENER SPACING TO SUITE APPLICATION.

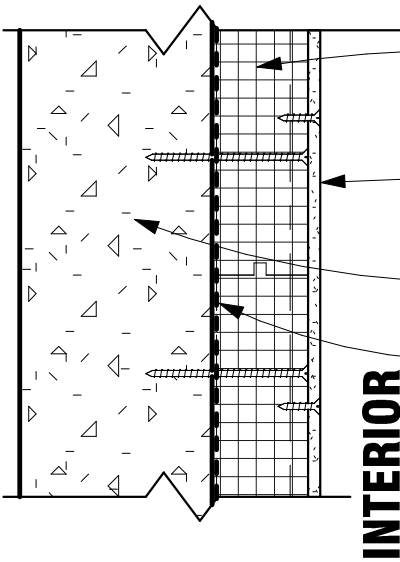
PERFORATED QUIK-THERM™ ADC INSULATION SECURED TO CONCRETE SUBSTRATE. FASTENER SPACING TO SUITE APPLICATION.

INTERIOR GYPSUM SHEATHING AS PER DESIGN BY OTHERS. SECURE TO QUIK-THERM™ INTEGRATED FURRING

CONCRETE SUBSTRATE AS PER DESIGN BY OTHERS

SELF ADHERED WATERPROOF TO SUBSTRATE

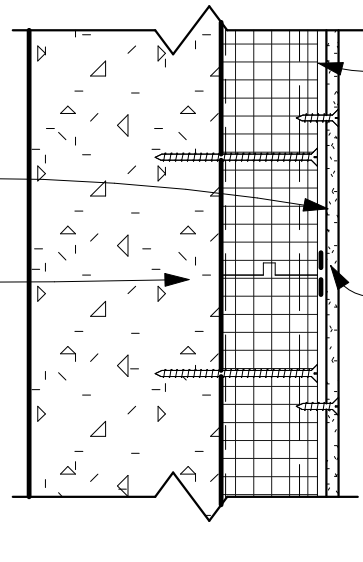
COMPATIBLE TAPE AT JOINTS



EXTERIOR

INTERIOR

### INTERIOR APPLICATION OPTION #1



EXTERIOR

INTERIOR

### INTERIOR APPLICATION OPTION #2

## QT-ADC CONCRETE (INT & EXT)



Quik-Therm Insulation Solutions Inc.

## ENVELOPE DETAILS

### Quik-Therm Air Dry Connect (ADC)

quiktherm.com (888) 735-3012 (204) 736-3012

## QT-ADC-8

### NOTES 1

1 1/2" = 1'-0"

## Handling & Storage Considerations Notes

1. Store product in a covered area, away from the elements and direct sunlight.
2. Protect product from damage. Although Quik-Therm ADC is rugged and durable, corners and edges are especially susceptible to damage during transport, storage and installation.
3. Although product is lightweight, it is typically shipped in bundles 1' thick consisting of several individual sheets.
4. Bundles may be awkward to handle due to their physical size. Use proper caution to avoid personal injury and/or physical damage to product.
5. Product has an EPS foam core. Keep away from extreme heat.
6. Avoid walking on uninstalled product.

## Personal Protective Equipment Notes

1. Follow standard workplace safety protocols including (but not limited to) the use of eye and hearing protection, gloves, and dust masks as required.

## Cutting Notes

1. The product can be cut using a variety of methods typical for standard foam board insulation, including (but not limited to):
  - Utility Knife
  - Hand Saw
  - Circular Saw
  - Table Saw
  - Hot Knife

## Suggested Tools and Materials Notes

1. Hammer, Screw Gun and/or Nail Gun, Utility Knife & Blades, Hand Saw, Circular Saw, Spray Foam and adhesive (PL-300) or compatible adhesive with Polystyrene foam, Coated Deck Screws (Appropriate length), Hammer Drill (Concrete Only), 4' Level, Caulking Gun, Measuring Tape. Optional: Table Saw.

## General Notes

1. Install building wrap and window / door air barrier detailing before installing Quik-Therm Air Dry Connect as per building code requirements and best practices. Consult a building professional as required.
2. Windows, Door Openings & Corners: Apply flashing, caulking, WRB and/or air barrier peel and stick products as required. Refer to "Guide to Attaching Exterior Wall Coverings through Foam Sheathing to Wood or Steel Wall Framing" by the Foam Sheathing Coalition (FSC).
3. Typical air barrier locations presented herein are as per common construction practice; confirm/consult with design professional.
4. Typical constructions shown herein. Please refer to design drawings specific to your application. Confirm/consult with design professional prior to installing Quik-Therm products.
5. The information presented herein is based upon data considered accurate. Quik-Therm Insulation Solutions Inc. does not assume any responsibility for any misrepresentation or assumptions the reader may formulate. Please check local building codes prior to installing Quik-Therm products.

## General Installation Recommendations Notes

1. General instructions apply to wood frame buildings up to 3 stories. For wood frame buildings from 4 to 6 stories, additional instructions apply.
2. Air Dry Connect is installed with furring strips toward the outboard side.
3. Determine the wall framing spacing. ADC is available in 16" or 24" O.C. For heavy cladding materials such as cement board siding and stucco, furring strips must match up with vertical wall studs.
4. For the application of light weight metal paneling and vinyl siding, ADC can be installed horizontal in buildings from 1 to 3 storeys. For heavier cladding with horizontal ADC orientation fastening schedule engineering is required. Additional furring may be required. Consult with a building professional
5. Fasteners should be installed as per FSC guidelines. Depending on orientation, cladding weight, and wind loads an engineered fastening schedule may be required.
6. For stucco and horizontal cement fibre board - vertical batten application is recommended. For horizontal applications please consult a design professional.
7. Tape or foam all connections. Use spray foams and/or adhesives compatible with polystyrene foam insulation (e.g. Hilti CF 812 and PL-300). For cold weather applications, purchase cold weather spray foams and adhesives. For best tape application, use a spatula to apply uniform pressure to ensure a good seal between tape and panels.
8. This product is combustible. Protect from high heat sources. A protective barrier or thermal barrier may be required as specified in the appropriate building code. Consult a design professional.





Quik-Therm Insulation Solutions Inc.

## ENVELOPE DETAILS

### Quik-Therm Air Dry Connect (ADC)

quiktherm.com (888) 735-3012 (204) 736-3012

## QT-ADC-9

### NOTES 2

1 1/2" = 1'-0"

## Buildings from 4 to 6 Storeys Notes

- 1. ADC installed with furring strips in vertical orientation only.
- Refer to CAN/ULC S-101 Fire Test at quiktherm.com
- Screws must penetrate the wall studding as per FSC guidelines.
- All vertical and horizontal joints should be foamed and taped.
- Install cladding as per design requirements.

## Convection Looping Notes

- 1. For best R-value performance, convection looping between ADC and substrate must be controlled. Apply a horizontal bead of spray foam or compatible sealant (minimum 1/2" thick) to the top of ADC panels located at the top of walls and the bottom of window framing.
- 2. For other areas where convection looping may be a concern, please consult with your Quik-Therm representative for appropriate mitigation measures.

## Exterior Perforations Notes (Electrical Boxes / hose bibs etc)

Seal all exterior wall electrical boxes and other breaches using conventional code compliant techniques. Apply tapes and sealants to the Quik-Therm™ ADC Connect polymer film in the same manner as 6 mil polyethylene. Optional: Pressure sealed hard plastic electrical boxes with foam gaskets.

## Horizontal Installation Notes

- 1. Typical construction shown. Please refer to design drawings specific to your application. Confirm/consult with design professional prior to installing Quik-Therm products.
- 2. Two framing nails (minimum 3.25" long) fasten furring strips to studs, corners, top plates, bottom plate and rim joists.
- 3. Top horizontal furring strip to be fastened maximum 1" from top of top plate.
- 4. Butt ends to connect over studs (just like OSB sheathing). \*\* For locations where butt ends don't align center over a stud, an extra stud must be incorporated. Studs can be installed conventional or flat orientation.
- 5. Cladding weight. Maximum 5 lb. per sq ft. \*\* For over 5 lb. cladding and cementitious stucco - install Quik-Therm™ ADC Connect in a vertical orientation - or as specified by a Design Professional.
- 6. Install cladding per manufacturers recommendations/specifications. It is recommended to use building paper between cementitious stucco and the Quik-Therm™ ADC panel film. Masonry cladding: Consult with a Design Professional.
- 7. The information presented herein is based upon data considered accurate. Quik-Therm Insulation Solutions Inc. does not assume any responsibility for any misrepresentation or assumptions the reader may formulate. Please check local building codes prior to installing Quik-Therm products.

## Canned Spray Foam Notes

- 1. Foam together tongue and groove and butt foam to foam connections. Spray foam must be compatible with expanded polystyrene (EPS) rigid foam.
- 2. Use spray foam to fill cracks and gaps between rigid foam and rigid foam and wood and around windows, doors, etc.
- 3. DO NOT use spray foam to create an air barrier connection to polymer facers. It DOESN'T create a structural bond.
- 4. DO NOT use spray foam in lieu of the poly foam gaskets or air barrier sealants.
- 5. For additional spray foam applications consult with a Design Professional.

## Air Barrier Sealants Notes

- 1. Air Barrier sealants must be compatible with the Quik-Therm™ ADC polymer facers and rigid EPS foam. Recommendations: LePage Quad Max or Henry Air Bloc, or specified by a Design Professional.
- 2. Liquid applied air barrier sealants can be used to seal window and door nailing fins, etc. to Quik-Therm™ ADC polymer facers. See Installation Guidelines. Refer to Sealant Manufacturer's recommendations.
- 3. Air barrier sealants are not recommended for foam to foam and wide/large gap connections. Use spray foam to fill large gaps.



Quik-Therm Insulation Solutions Inc.

# ENVELOPE DETAILS

## Quik-Therm Air Dry Connect (ADC)

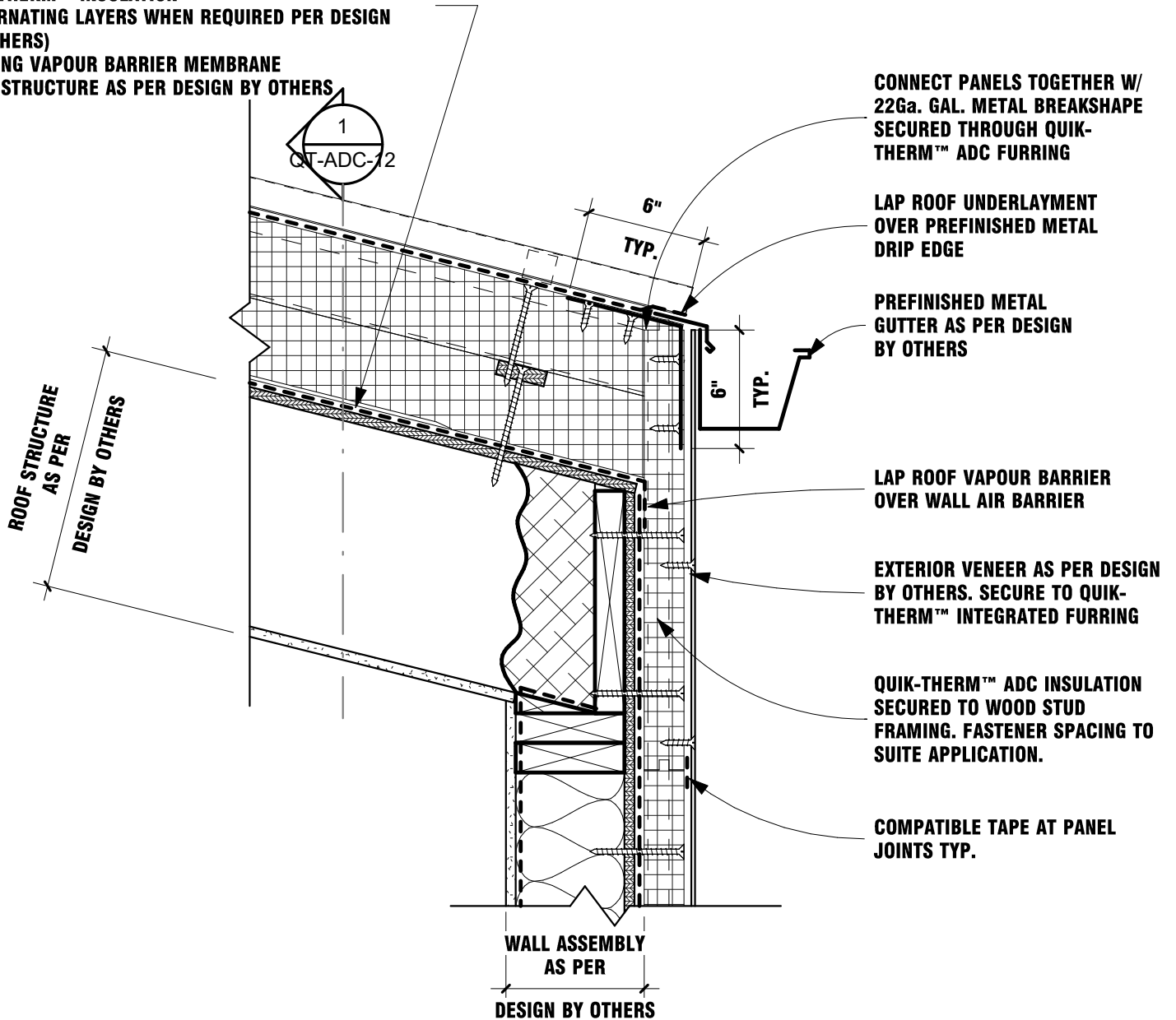
quiktherm.com (888) 735-3012 (204) 736-3012

# QT-ADC-10a

## MATRIX ROOF - EAVE SECTION VIEW

1 1/2" = 1'-0"

**TYPICAL MATRIX ROOF SYSTEM:**  
 PREFINISHED METAL STANDING SEAM ROOFING PANELS  
 COMPATIBLE ROOF UNDERLAYMENT  
 QUIK-THERM™ INSULATION  
 (ALTERNATING LAYERS WHEN REQUIRED PER DESIGN BY OTHERS)  
 ROOFING VAPOUR BARRIER MEMBRANE  
 ROOF STRUCTURE AS PER DESIGN BY OTHERS



# QT-ADC MATRIX ROOF EAVE - PLYWOOD DECK (EXTERIOR METAL STRAP)



Quik-Therm Insulation Solutions Inc.

# ENVELOPE DETAILS

## Quik-Therm Air Dry Connect (ADC)

quiktherm.com (888) 735-3012 (204) 736-3012

# QT-ADC-10b

## MATRIX ROOF - EAVE SECTION VIEW

1 1/2" = 1'-0"

**TYPICAL MATRIX ROOF SYSTEM:**  
 PREFINISHED METAL STANDING SEAM ROOFING PANELS  
 COMPATIBLE ROOF UNDERLAYMENT  
 QUIK-THERM™ INSULATION  
 (ALTERNATING LAYERS WHEN REQUIRED PER DESIGN BY OTHERS)  
 ROOFING VAPOUR BARRIER MEMBRANE  
 ROOF STRUCTURE AS PER DESIGN BY OTHERS

CONNECT PANEL EDGE TO ROOF DECK W/ CONT. 22Ga. GAL. METAL C-SHAPE BREAK SECURED THROUGH ROOF DECK. PROVIDE MIN 1" GAP BETWEEN SECTIONS FOR INTERNAL DRAINAGE

LAP ROOF UNDERLAYMENT OVER PREFINISHED METAL DRIP EDGE

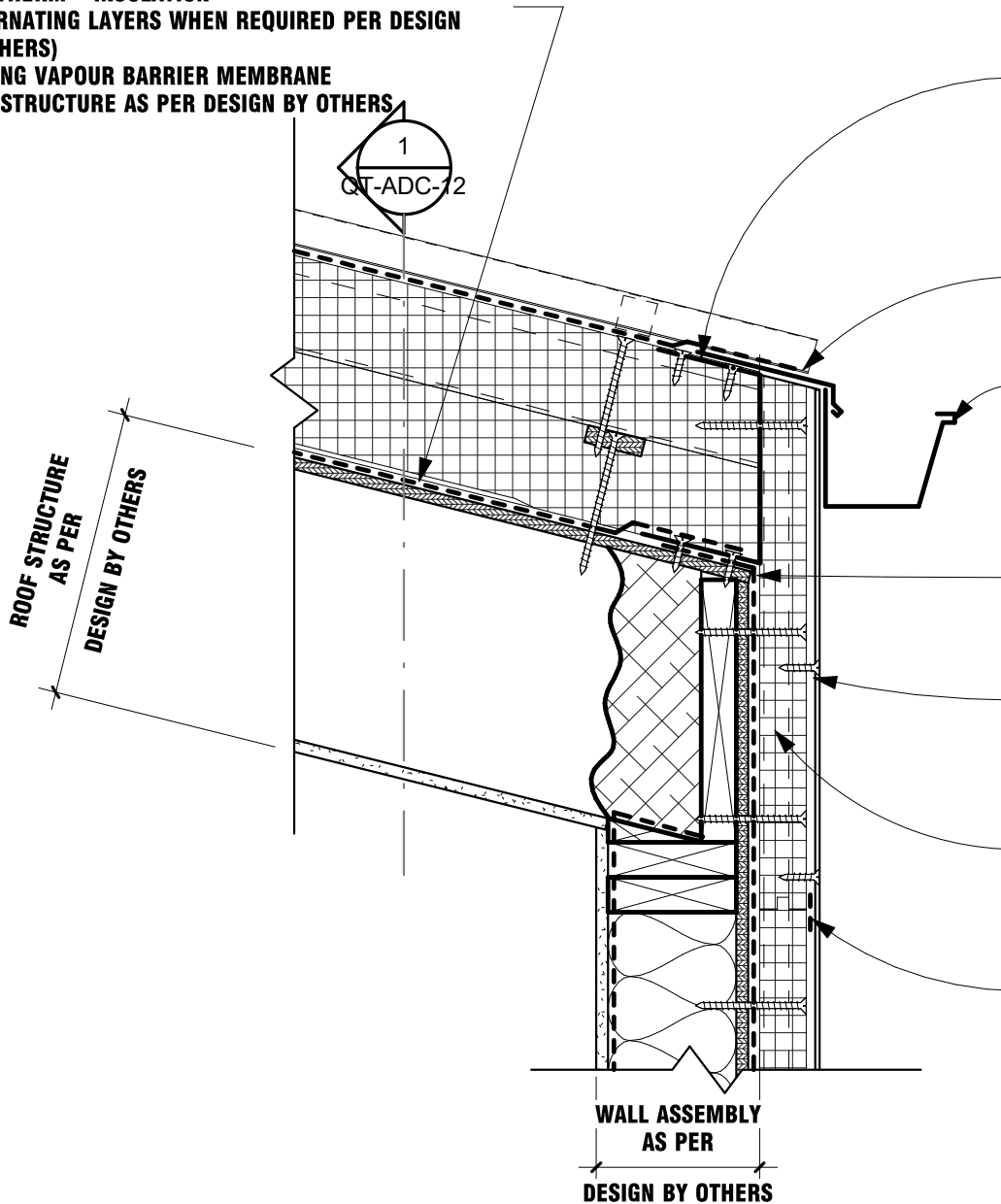
PREFINISHED METAL GUTTER AS PER DESIGN BY OTHERS

EXTENT WALL AIR BARRIER UNDER METAL BREAK SHAPE

EXTERIOR VENEER AS PER DESIGN BY OTHERS. SECURE TO QUIK-THERM™ INTEGRATED FURRING

QUIK-THERM™ ADC INSULATION SECURED TO WOOD STUD FRAMING. FASTENER SPACING TO SUITE APPLICATION.

COMPATIBLE TAPE AT PANEL JOINTS TYP.



## QT-ADC MATRIX ROOF EAVE - PLYWOOD DECK (INTERIOR METAL STRAP)



Quik-Therm Insulation Solutions Inc.

# ENVELOPE DETAILS

## Quik-Therm Air Dry Connect (ADC)

quiktherm.com (888) 735-3012 (204) 736-3012

# QT-ADC-11a

## MATRIX ROOF - RIDGE SECTION VIEW

1 1/2" = 1'-0"

**TYPICAL MATRIX ROOF SYSTEM:**  
 PREFINISHED METAL STANDING SEAM ROOFING PANELS  
 COMPATIBLE ROOF UNDERLAYMENT  
 QUIK-THERM™ INSULATION  
 (ALTERNATING LAYERS WHEN REQUIRED PER DESIGN BY OTHERS)  
 ROOFING VAPOUR BARRIER MEMBRANE  
 ROOF STRUCTURE AS PER DESIGN BY OTHERS

LAP ROOF UNDERLAYMENT OVER EXTERIOR INSULATED PANEL

PREFINISHED METAL RIDGE CLOSURE AS PER DESIGN BY OTHERS

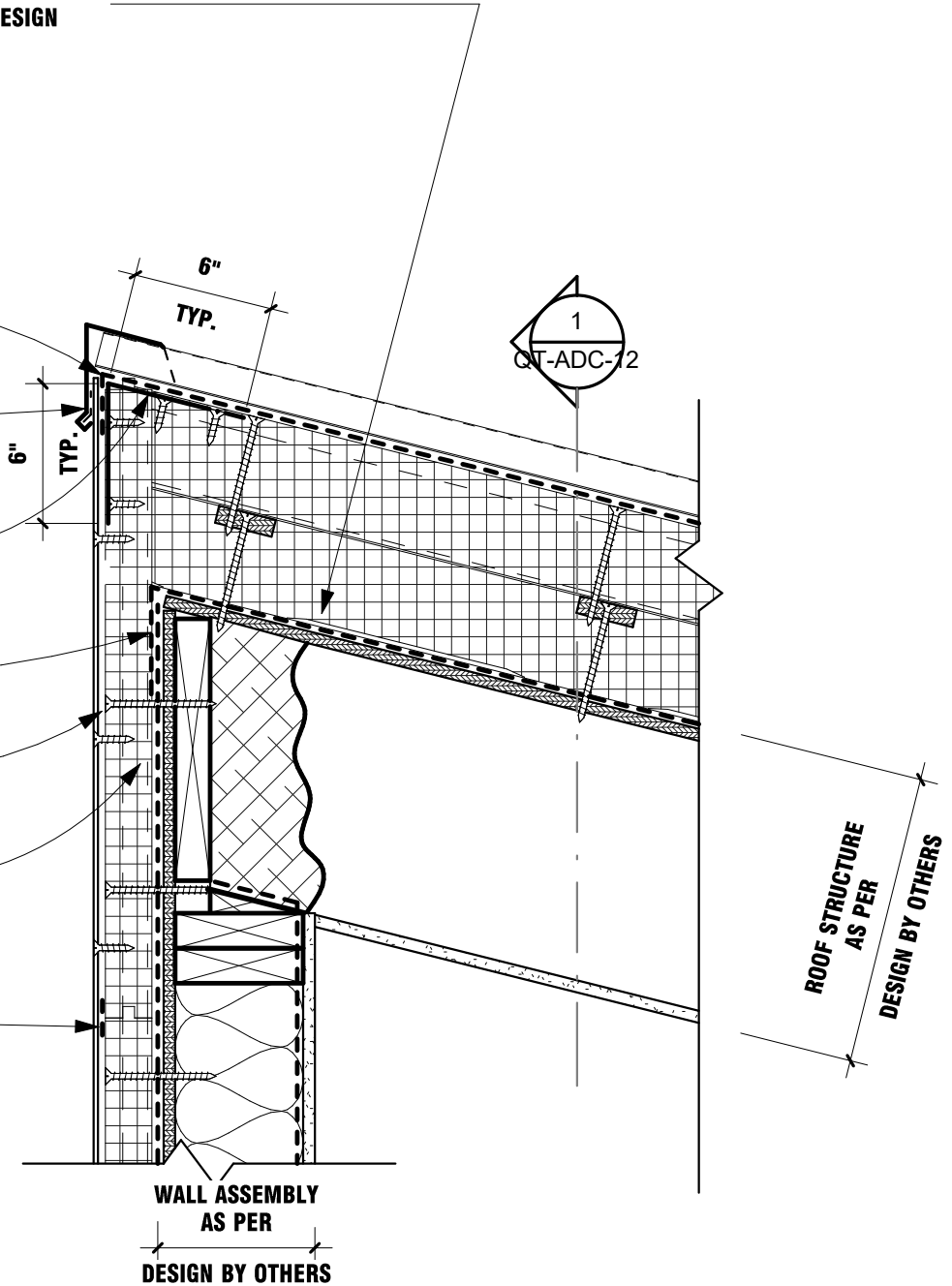
CONNECT PANELS TOGETHER W/ 22Ga. GAL. METAL BREAKSHAPE SECURED THROUGH QUIK-THERM™ ADC FURRING

LAP ROOF VAPOUR BARRIER OVER WALL AIR BARRIER

EXTERIOR VENEER AS PER DESIGN BY OTHERS. SECURE TO QUIK-THERM™ INTEGRATED FURRING

QUIK-THERM™ ADC INSULATION SECURED TO WOOD STUD FRAMING. FASTENER SPACING TO SUITE APPLICATION.

COMPATIBLE TAPE AT PANEL JOINTS TYP.



# QT-ADC MATRIX ROOF RIDGE - PLYWOOD DECK (EXTERIOR METAL STRAP)



Quik-Therm Insulation Solutions Inc.

# ENVELOPE DETAILS

## Quik-Therm Air Dry Connect (ADC)

quiktherm.com (888) 735-3012 (204) 736-3012

# QT-ADC-11b

## MATRIX ROOF - RIDGE SECTION VIEW

1 1/2" = 1'-0"

**TYPICAL MATRIX ROOF SYSTEM:**  
**PREFINISHED METAL STANDING SEAM ROOFING PANELS**  
**COMPATIBLE ROOF UNDERLAYMENT**  
**QUIK-THERM™ INSULATION**  
**(ALTERNATING LAYERS WHEN REQUIRED PER DESIGN BY OTHERS)**  
**ROOFING VAPOUR BARRIER MEMBRANE**  
**ROOF STRUCTURE AS PER DESIGN BY OTHERS**

LAP ROOF UNDERLAYMENT OVER EXTERIOR INSULATED PANEL

PREFINISHED METAL RIDGE CLOSURE AS PER DESIGN BY OTHERS

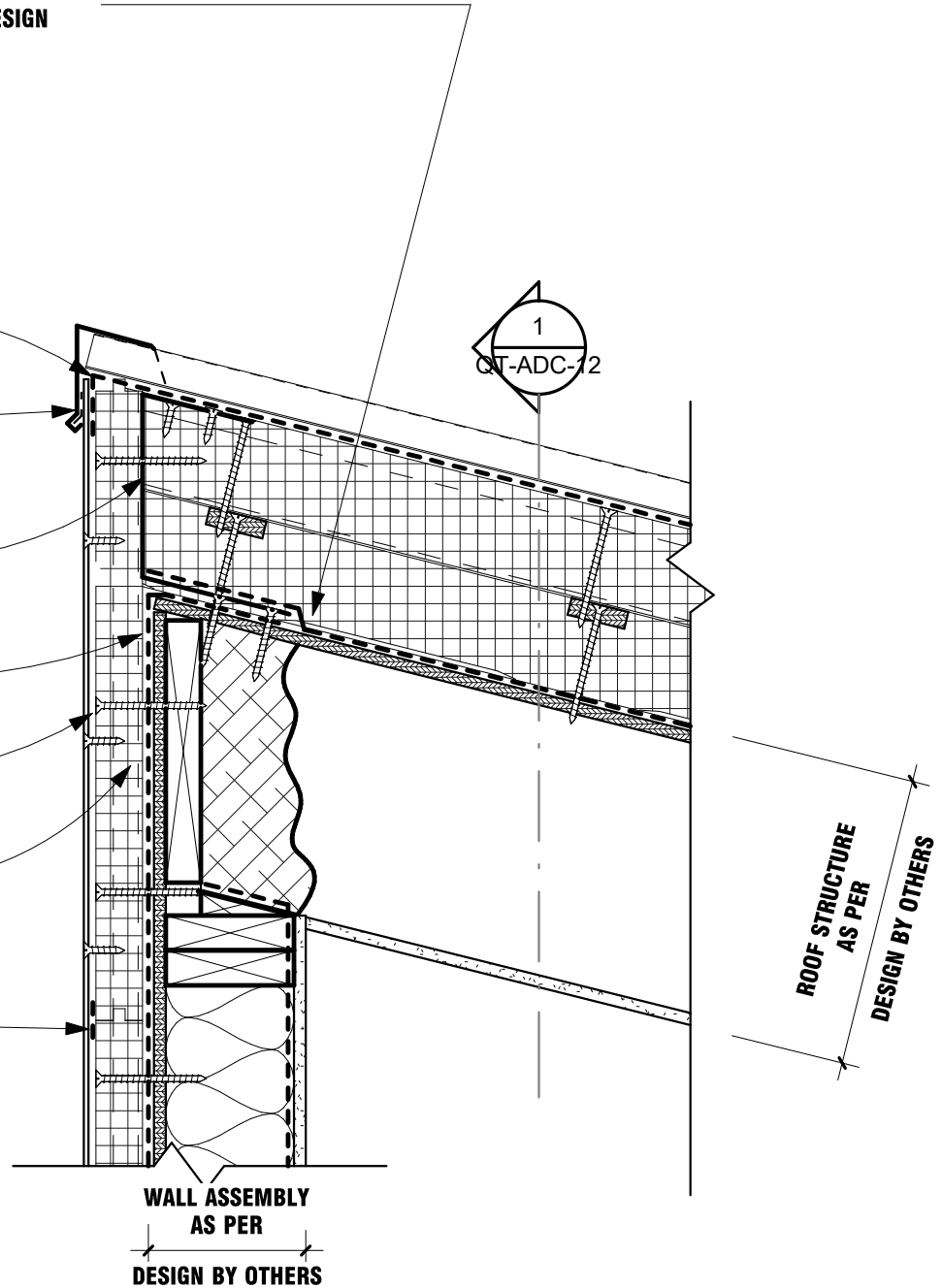
CONNECT PANEL EDGE TO ROOF DECK W/ CONT. 22Ga. GAL. METAL C-SHAPE BREAK SECURED THROUGH ROOF DECK.

EXTEND WALL AIR BARRIER UNDER METAL BREAK SHAPE

EXTERIOR VENEER AS PER DESIGN BY OTHERS. SECURE TO QUIK-THERM™ INTEGRATED FURRING

QUIK-THERM™ ADC INSULATION SECURED TO WOOD STUD FRAMING. FASTENER SPACING TO SUITE APPLICATION.

COMPATIBLE TAPE AT PANEL JOINTS TYP.



# QT-ADC MATRIX ROOF RIDGE - PLYWOOD DECK (INTERIOR METAL STRAP)



Quik-Therm Insulation Solutions Inc.

# ENVELOPE DETAILS

## Quik-Therm Air Dry Connect (ADC)

quiktherm.com (888) 735-3012 (204) 736-3012

# QT-ADC-12

## MATRIX ROOF - EDGE SECTION VIEW

1 1/2" = 1'-0"

**TYPICAL MATRIX ROOF SYSTEM:**  
 PREFINISHED METAL STANDING SEAM ROOFING PANELS  
 COMPATIBLE ROOF UNDERLAYMENT  
 QUIK-THERM™ INSULATION  
 (ALTERNATING LAYERS WHEN REQUIRED PER DESIGN BY OTHERS)  
 ROOFING VAPOUR BARRIER MEMBRANE  
 ROOF STRUCTURE AS PER DESIGN BY OTHERS

PREFINISHED METAL RIDGE CLOSURE AS PER DESIGN BY OTHERS

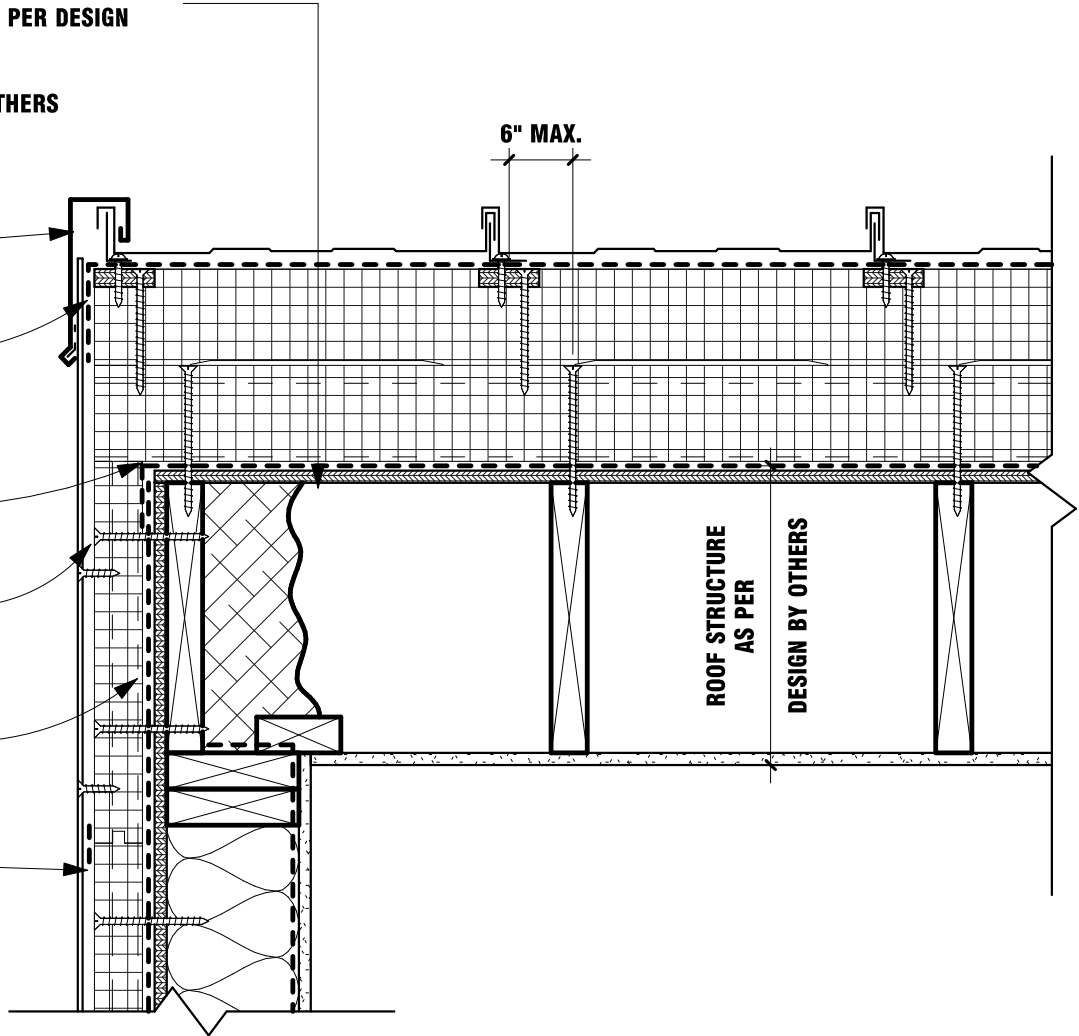
LAP ROOF UNDERLAYMENT OVER EXTERIOR INSULATED PANEL

LAP ROOF VAPOUR BARRIER OVER WALL AIR BARRIER

EXTERIOR VENEER AS PER DESIGN BY OTHERS. SECURE TO QUIK-THERM™ INTEGRATED FURRING

QUIK-THERM™ ADC INSULATION SECURED TO WOOD STUD FRAMING. FASTENER SPACING TO SUITE APPLICATION.

COMPATIBLE TAPE AT PANEL JOINTS TYP.



WALL ASSEMBLY AS PER

DESIGN BY OTHERS

# QT-ADC MATRIX ROOF EDGE - PLYWOOD DECK (SLOPING IN FORGROUND)



Quik-Therm Insulation Solutions Inc.

# ENVELOPE DETAILS

## Quik-Therm Air Dry Connect (ADC)

quiktherm.com (888) 735-3012 (204) 736-3012

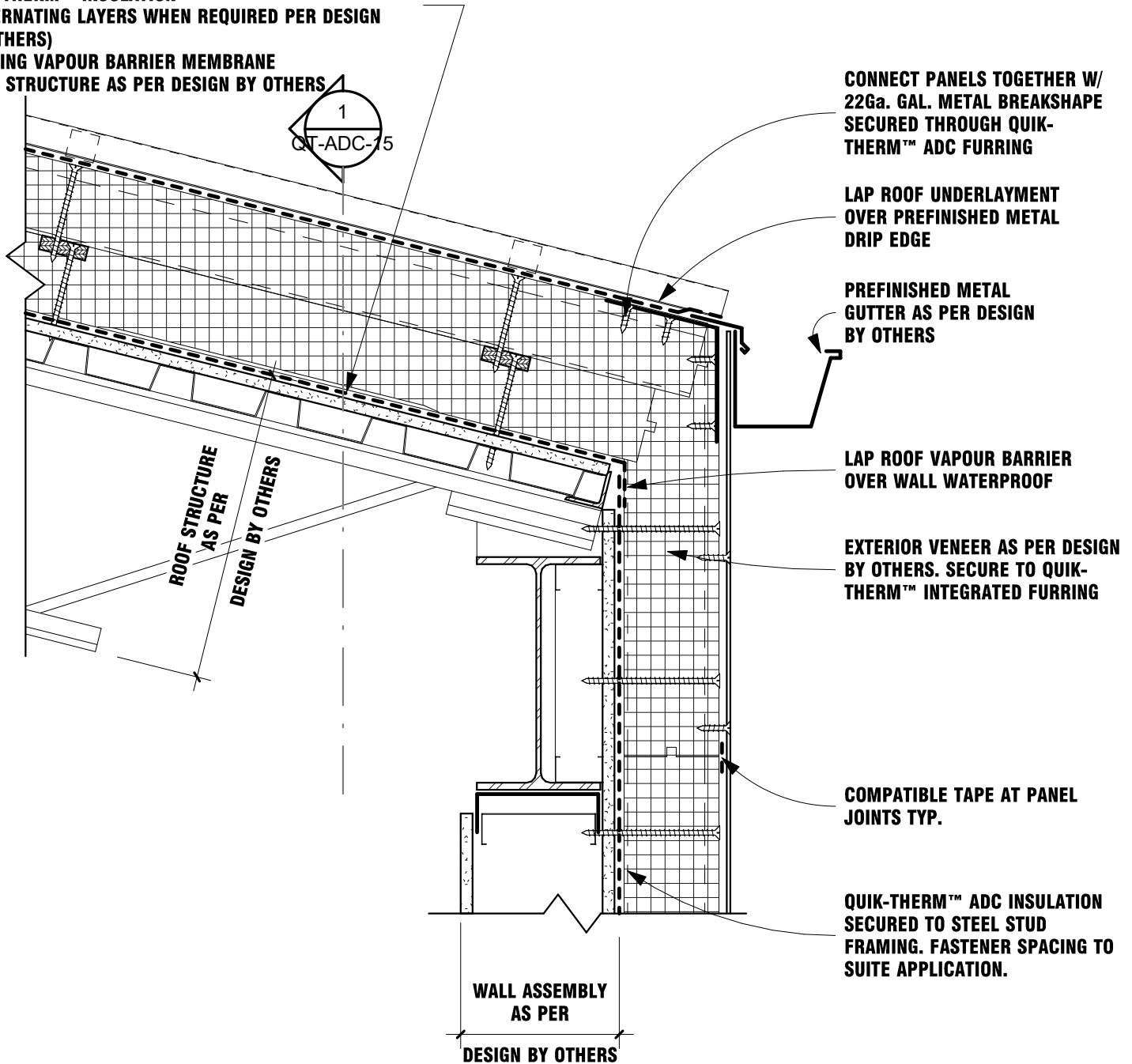
# QT-ADC-13a

## MATRIX ROOF - EAVE SECTION VIEW

1 1/2" = 1'-0"

### TYPICAL MATRIX ROOF SYSTEM:

- PREFINISHED METAL STANDING SEAM ROOFING PANELS
- COMPATIBLE ROOF UNDERLAYMENT
- QUIK-THERM™ INSULATION  
(ALTERNATING LAYERS WHEN REQUIRED PER DESIGN BY OTHERS)
- ROOFING VAPOUR BARRIER MEMBRANE
- ROOF STRUCTURE AS PER DESIGN BY OTHERS



# QT-ADC MATRIX ROOF EAVE - PLYWOOD DECK (EXTERIOR METAL STRAP)



Quik-Therm Insulation Solutions Inc.

# ENVELOPE DETAILS

## Quik-Therm Air Dry Connect (ADC)

quiktherm.com (888) 735-3012 (204) 736-3012

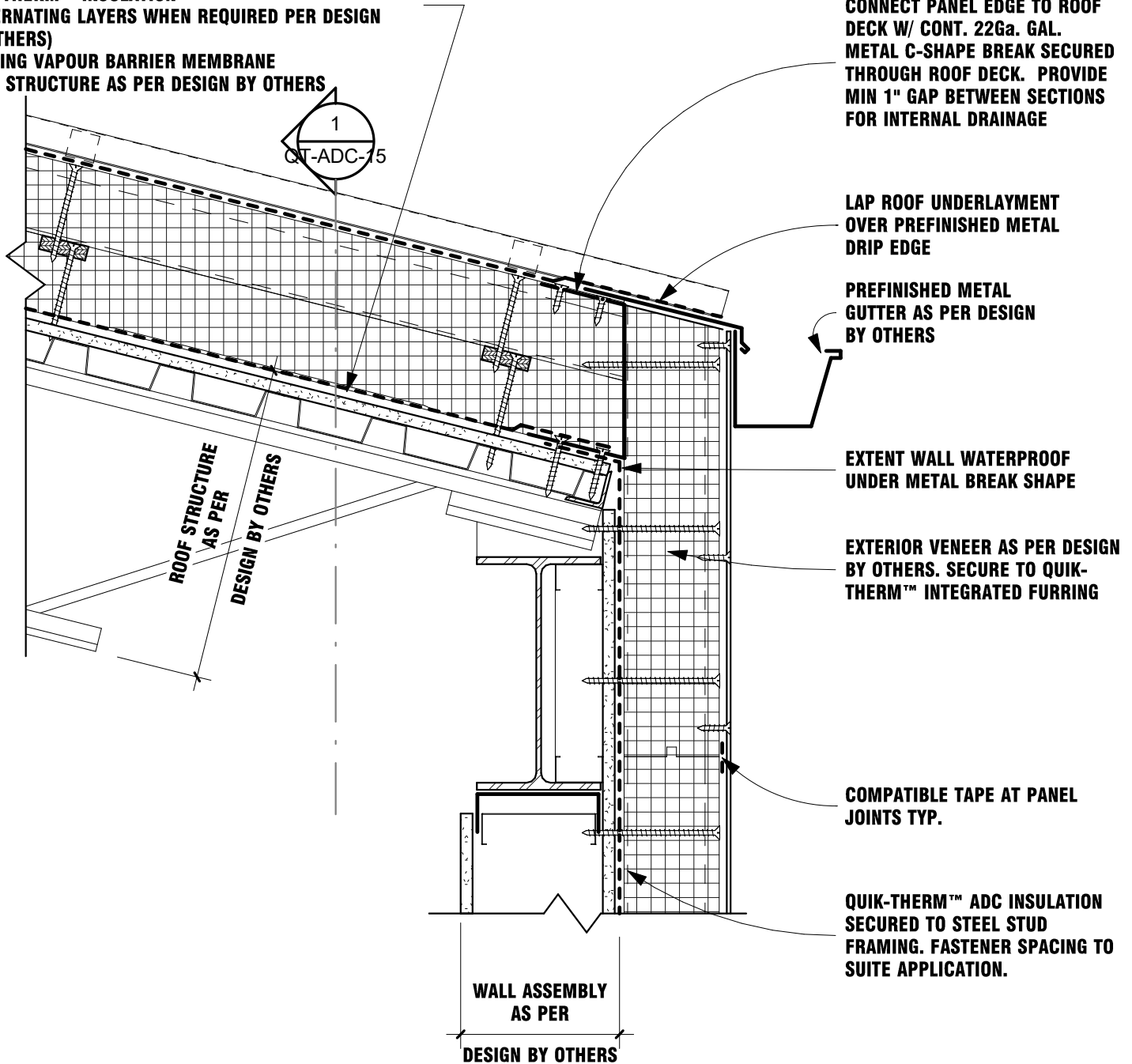
# QT-ADC-13b

## MATRIX ROOF - EAVE SECTION VIEW

1 1/2" = 1'-0"

### TYPICAL MATRIX ROOF SYSTEM:

- PREFINISHED METAL STANDING SEAM ROOFING PANELS
- COMPATIBLE ROOF UNDERLAYMENT
- QUIK-THERM™ INSULATION  
(ALTERNATING LAYERS WHEN REQUIRED PER DESIGN BY OTHERS)
- ROOFING VAPOUR BARRIER MEMBRANE
- ROOF STRUCTURE AS PER DESIGN BY OTHERS



CONNECT PANEL EDGE TO ROOF DECK W/ CONT. 22Ga. GAL. METAL C-SHAPE BREAK SECURED THROUGH ROOF DECK. PROVIDE MIN 1" GAP BETWEEN SECTIONS FOR INTERNAL DRAINAGE

LAP ROOF UNDERLAYMENT OVER PREFINISHED METAL DRIP EDGE

PREFINISHED METAL GUTTER AS PER DESIGN BY OTHERS

EXTENT WALL WATERPROOF UNDER METAL BREAK SHAPE

EXTERIOR VENEER AS PER DESIGN BY OTHERS. SECURE TO QUIK-THERM™ INTEGRATED FURRING

COMPATIBLE TAPE AT PANEL JOINTS TYP.

QUIK-THERM™ ADC INSULATION SECURED TO STEEL STUD FRAMING. FASTENER SPACING TO SUITE APPLICATION.

ROOF STRUCTURE AS PER DESIGN BY OTHERS

WALL ASSEMBLY AS PER

DESIGN BY OTHERS

# QT-ADC MATRIX ROOF EAVE - PLYWOOD DECK (INTERIOR METAL STRAP)





Quik-Therm Insulation Solutions Inc.

# ENVELOPE DETAILS

## Quik-Therm Air Dry Connect (ADC)

quiktherm.com (888) 735-3012 (204) 736-3012

# QT-ADC-14a

## MATRIX ROOF - RIDGE SECTION VIEW

1 1/2" = 1'-0"

**TYPICAL MATRIX ROOF SYSTEM:**  
 PREFINISHED METAL STANDING SEAM ROOFING PANELS  
 COMPATIBLE ROOF UNDERLAYMENT  
 QUIK-THERM™ INSULATION  
 (ALTERNATING LAYERS WHEN REQUIRED PER DESIGN BY OTHERS)  
 ROOFING VAPOUR BARRIER MEMBRANE  
 ROOF STRUCTURE AS PER DESIGN BY OTHERS

LAP ROOF UNDERLAYMENT OVER EXTERIOR INSULATED PANEL

PREFINISHED METAL RIDGE CLOSURE AS PER DESIGN BY OTHERS

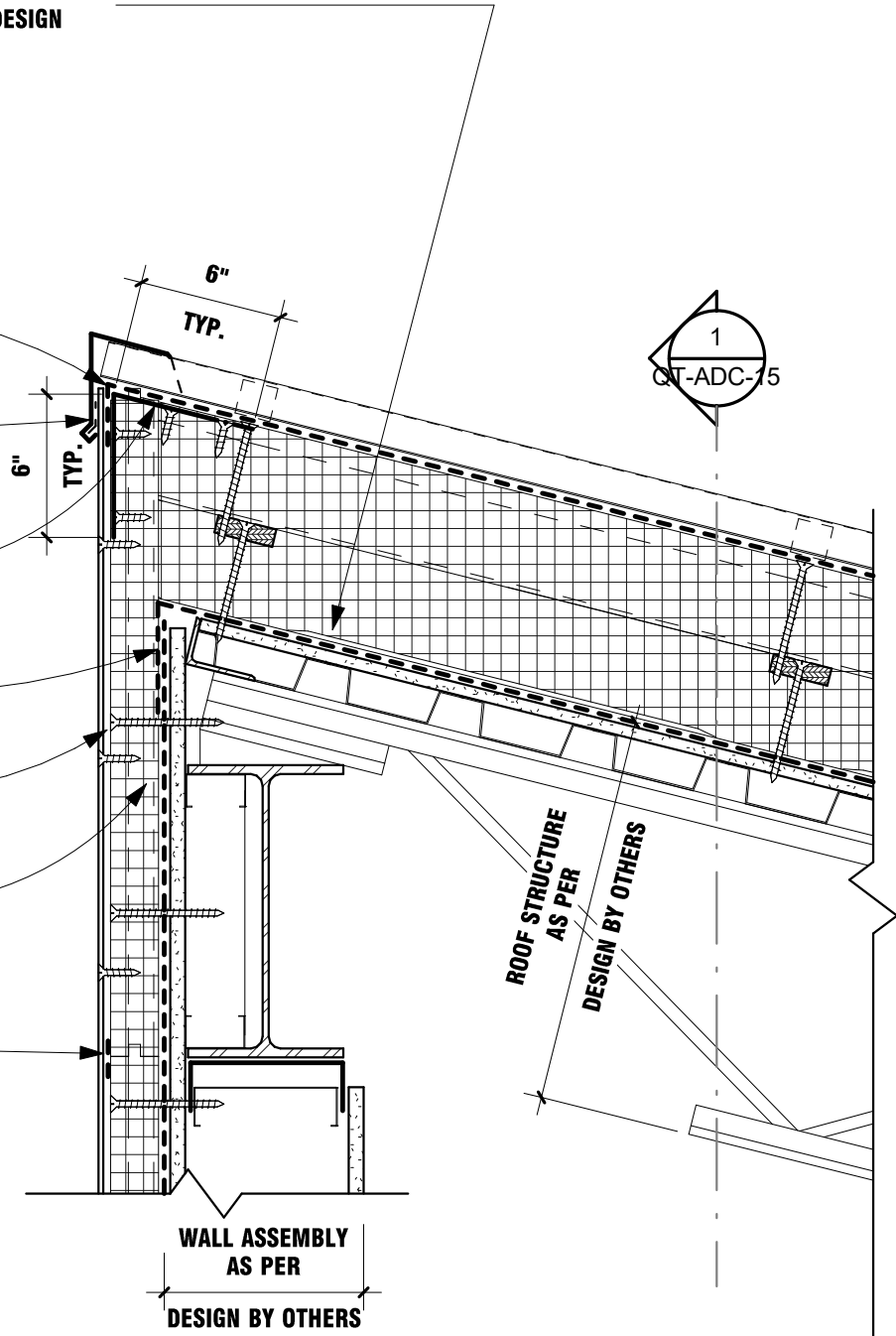
CONNECT PANELS TOGETHER W/ 22Ga. GAL. METAL BREAKSHAPE SECURED THROUGH QUIK-THERM™ ADC FURRING

LAP ROOF VAPOUR BARRIER OVER WALL WATERPROOF

EXTERIOR VENEER AS PER DESIGN BY OTHERS. SECURE TO QUIK-THERM™ INTEGRATED FURRING

QUIK-THERM™ ADC INSULATION SECURED TO STEEL STUD FRAMING. FASTENER SPACING TO SUITE APPLICATION.

COMPATIBLE TAPE AT PANEL JOINTS TYP.



# QT-ADC MATRIX ROOF RIDGE - STEEL DECK (EXTERIOR METAL STRAP)



Quik-Therm Insulation Solutions Inc.

# ENVELOPE DETAILS

## Quik-Therm Air Dry Connect (ADC)

quiktherm.com (888) 735-3012 (204) 736-3012

# QT-ADC-14b

## MATRIX ROOF - RIDGE SECTION VIEW

1 1/2" = 1'-0"

**TYPICAL MATRIX ROOF SYSTEM:**  
 PREFINISHED METAL STANDING SEAM ROOFING PANELS  
 COMPATIBLE ROOF UNDERLAYMENT  
 QUIK-THERM™ INSULATION  
 (ALTERNATING LAYERS WHEN REQUIRED PER DESIGN BY OTHERS)  
 ROOFING VAPOUR BARRIER MEMBRANE  
 ROOF STRUCTURE AS PER DESIGN BY OTHERS

LAP ROOF UNDERLAYMENT OVER EXTERIOR INSULATED PANEL

PREFINISHED METAL RIDGE CLOSURE AS PER DESIGN BY OTHERS

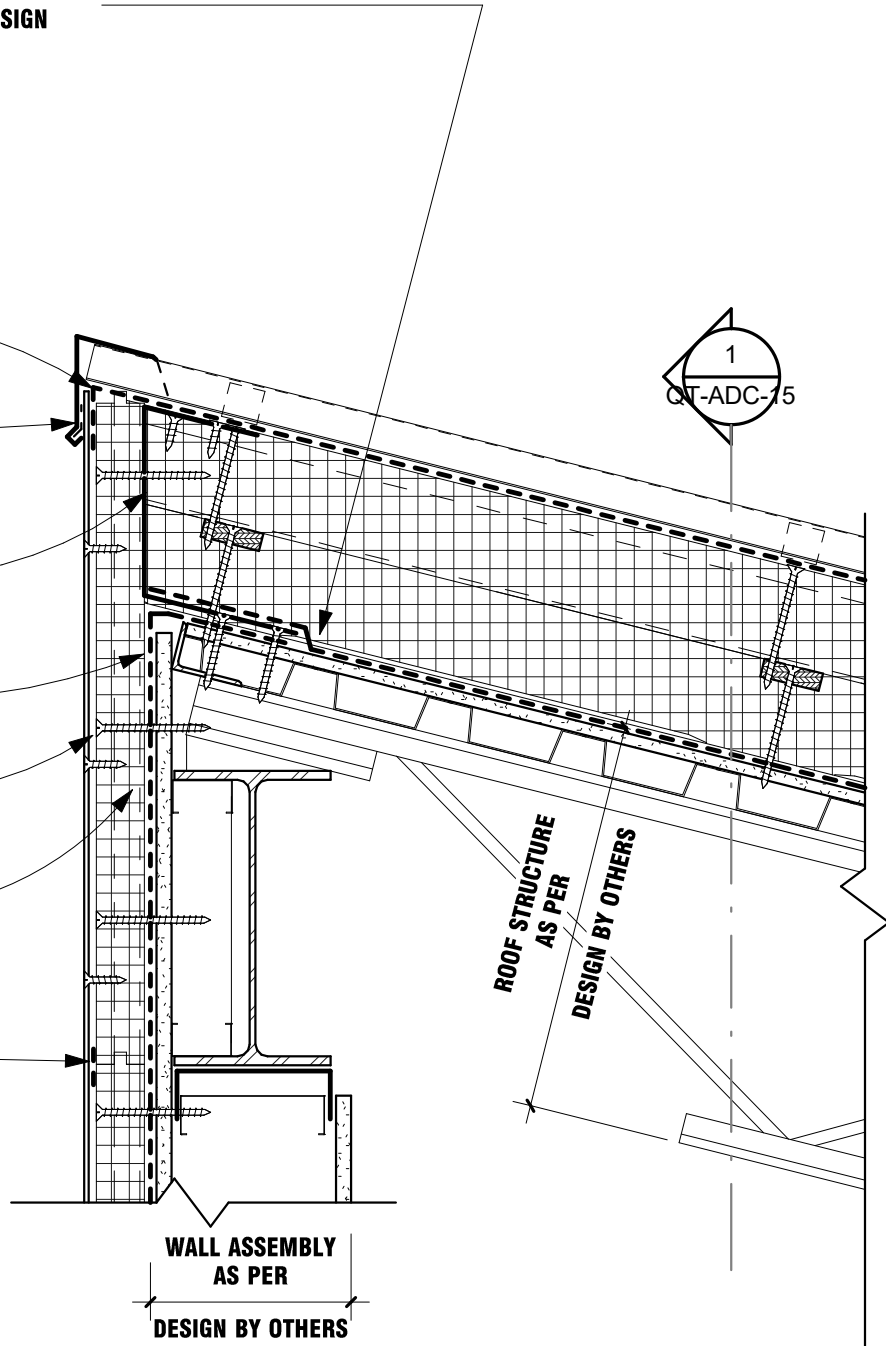
CONNECT PANEL EDGE TO ROOF DECK W/ CONT. 22Ga. GAL. METAL C-SHAPE BREAK SECURED THROUGH ROOF DECK.

EXTENT WALL WATERPROOF UNDER METAL BREAK SHAPE

EXTERIOR VENEER AS PER DESIGN BY OTHERS. SECURE TO QUIK-THERM™ INTEGRATED FURRING

QUIK-THERM™ ADC INSULATION SECURED TO STEEL STUD FRAMING. FASTENER SPACING TO SUITE APPLICATION.

COMPATIBLE TAPE AT PANEL JOINTS TYP.



# QT-ADC MATRIX ROOF RIDGE - STEEL DECK (INTERIOR METAL STRAP)



Quik-Therm Insulation Solutions Inc.

# ENVELOPE DETAILS

## Quik-Therm Air Dry Connect (ADC)

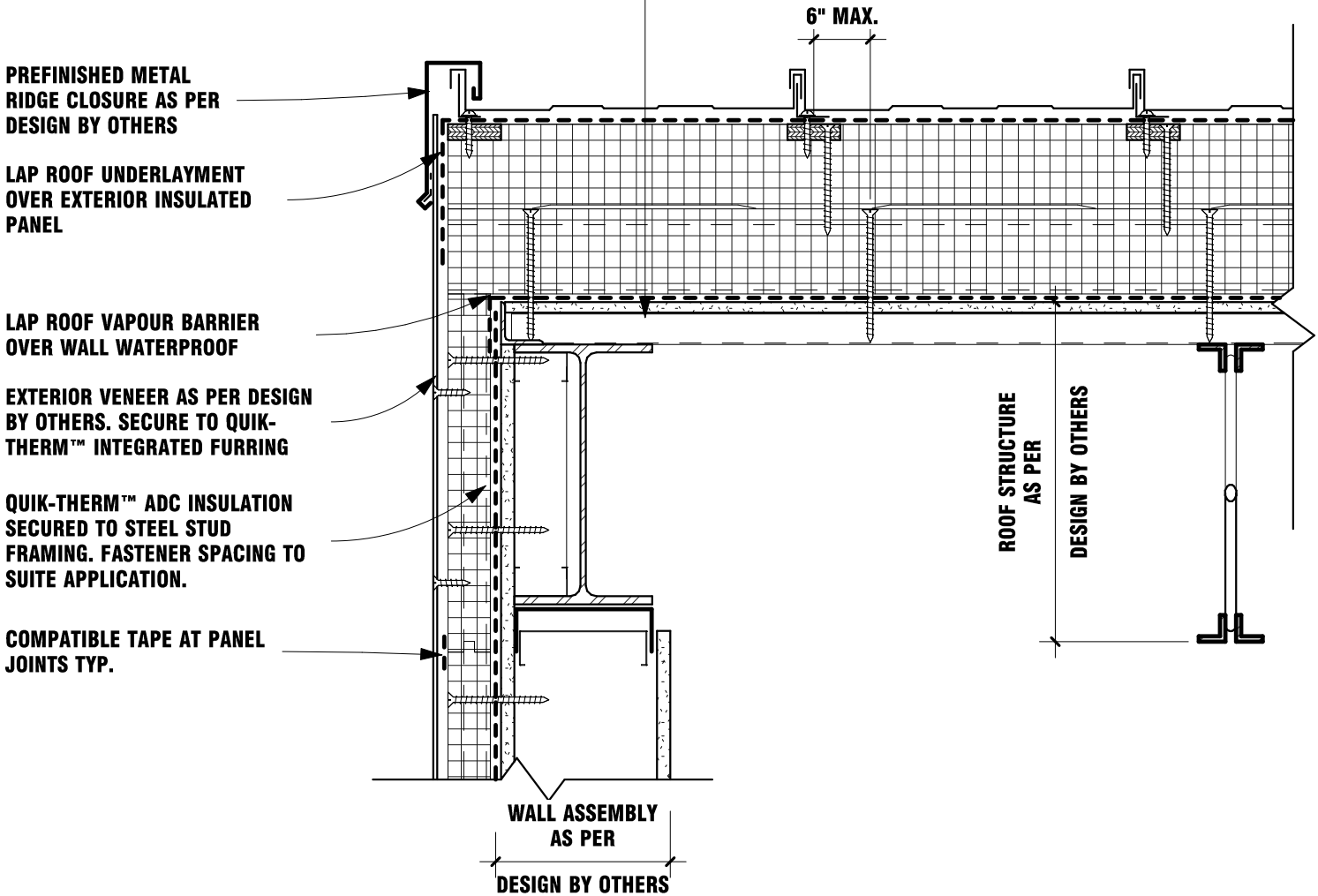
quiktherm.com (888) 735-3012 (204) 736-3012

# QT-ADC-15

## MATRIX ROOF - EDGE SECTION VIEW

1 1/2" = 1'-0"

**TYPICAL MATRIX ROOF SYSTEM:**  
**PREFINISHED METAL STANDING SEAM ROOFING PANELS**  
**COMPATIBLE ROOF UNDERLAYMENT**  
**QUIK-THERM™ INSULATION**  
**(ALTERNATING LAYERS WHEN REQUIRED PER DESIGN BY OTHERS)**  
**ROOFING VAPOUR BARRIER MEMBRANE**  
**ROOF STRUCTURE AS PER DESIGN BY OTHERS**



# QT-ADC MATRIX ROOF EDGE - STEEL DECK (SLOPING IN FORGROUND)



Quik-Therm Insulation Solutions Inc.

## ENVELOPE DETAILS

### Quik-Therm Air Dry Connect (ADC)

quiktherm.com (888) 735-3012 (204) 736-3012

## QT-ADC-16

### NOTES 1

1 1/2" = 1'-0"

## Matrix Roof System Notes

1. Always abide by guidelines and practices set out by provincial roofing contractors association.
2. Matrix instructions assume an impermeable WRB over a wood or metal fluted substrate (deck) with surrounding perimeter C Channels, unless otherwise specified by a design professional.
3. Depending on the project specific wind uplift, the size and type of fasteners should be evaluated by a professional registered in the project jurisdiction.
4. General instructions apply to application over a wood or fluted metal substrate with surrounding C channels. For other scenarios, please contact a building professional.
5. All panel edges to fit snugly together. Cut perimeter panels to fit snugly against metal C channels.
6. Typical fastener spacing is 16" O.C. Location of fasteners from the upper layer to fasteners in the lower layer should coincide closely to each other (within 6 inches). See Details. To avoid flexing, all battens require a fastener approximately 1" from batten ends.
7. Top layer panel joints/connections MUST be staggered. Seams from top layer panels MUST NOT align directly over seams of bottom layer panels.
8. Tape all seams on the bottom layer of Air Dry Connect with an approved vapour barrier tape. Taping of the top layer panels is not required.
9. Top layer batten ends must be fastened to lower layer battens. All top layer fasteners must fasten through top layer battens to bottom layer battens. DO NOT remove misplaced fasteners. Install another fastener in close proximity to the misplaced fastener.
10. For metal standing seam cladding an air permeable synthetic underlayment should be installed.
11. Typical air barrier locations and underlayment requirements presented herein are as per common construction practice; confirm/consult with design professional.

## Matrix Installation Notes

1. Starting from the lower eave, install first layer of Air Dry Connect panels. Drainage gaps and plywood battens run peak to eave. Ensure all panels fit snugly together. Cut panels as required to fit snugly against roof edging as per specific detail design.
2. If applicable, the thickest Air Dry Connect layer, should be the first (bottom) layer.
3. Tape all seams using an approved vapour barrier tape.
4. Starting from the lower eave, install second layer of Air Dry Connect panels. Drainage gaps and plywood battens run perpendicular to the lower layer battens and air channels. Ensure all panels fit snugly together. Cut panels as required to fit snugly against roof edging as per specific detail design.
5. Top layer panel joints/connections MUST be staggered. Seams from top layer panels must NOT align directly over seams of bottom layer panels. If applicable, the thinnest Air Dry Connect layer should be the top layer.
6. Secure each panel to the battens of the panel below using sufficient length fasteners. All top layer fasteners must fasten through top layer battens to bottom layer battens. DO NOT remove misplaced fasteners. Install another fastener in close proximity to the misplaced fastener.
7. Location of fasteners from the upper layer to fasteners in the lower layer should coincide closely to each other (within 6 inches).