

ENVELOPE DETAILS

Quik-Therm Multi-Purpose (MPI)

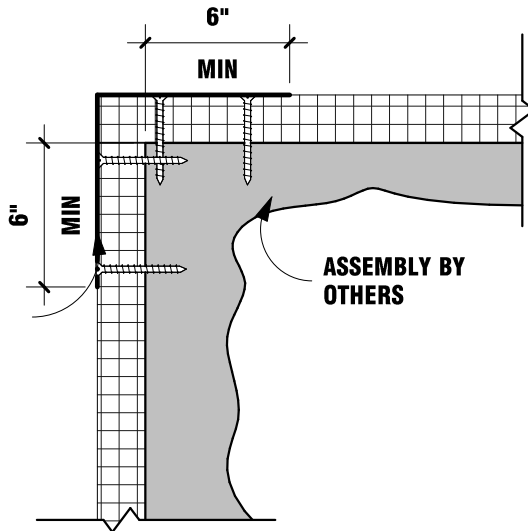
quiktherm.com (888) 735-3012 (204) 736-3012

QT-MPI-1

OUTSIDE CORNER PLAN VIEW

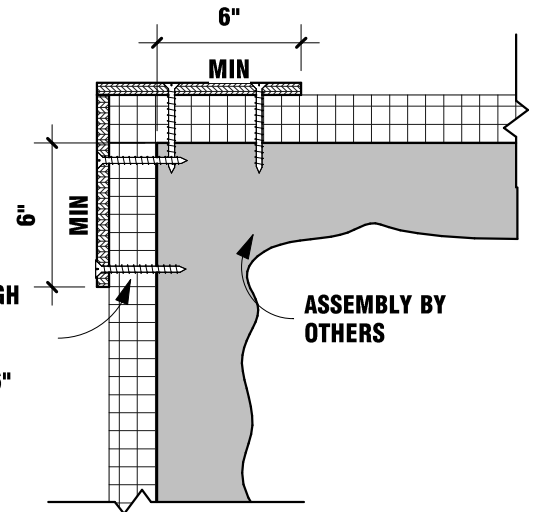
1 1/2" = 1'-0"

**22Ga. GALVANIZED
METAL BREAKSHAPE
SECURED THROUGH
HORIZONTAL MPI
INSULATION W/ 2
FASTENERS AT 16"
CENTERS**

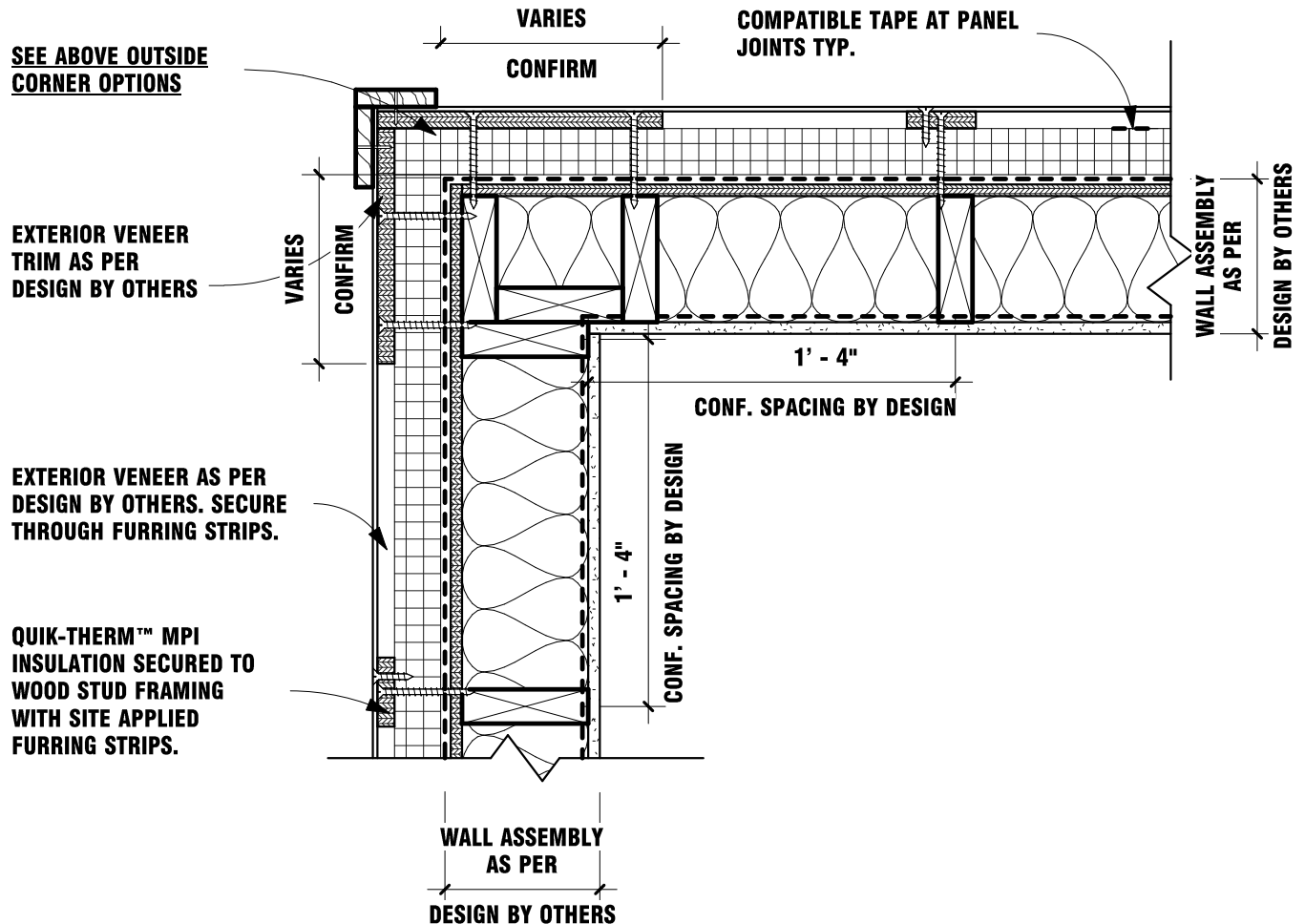


OPTION #1

**3/4" PLYWOOD
SECURED THROUGH
HORIZONTAL MPI
INSULATION W/ 2
FASTENERS AT 16"
CENTERS**



OPTION #2



QT-MPI OUTSIDE CORNER DETAIL



Quik-Therm Insulation Solutions Inc.

ENVELOPE DETAILS

Quik-Therm Multi-Purpose (MPI)

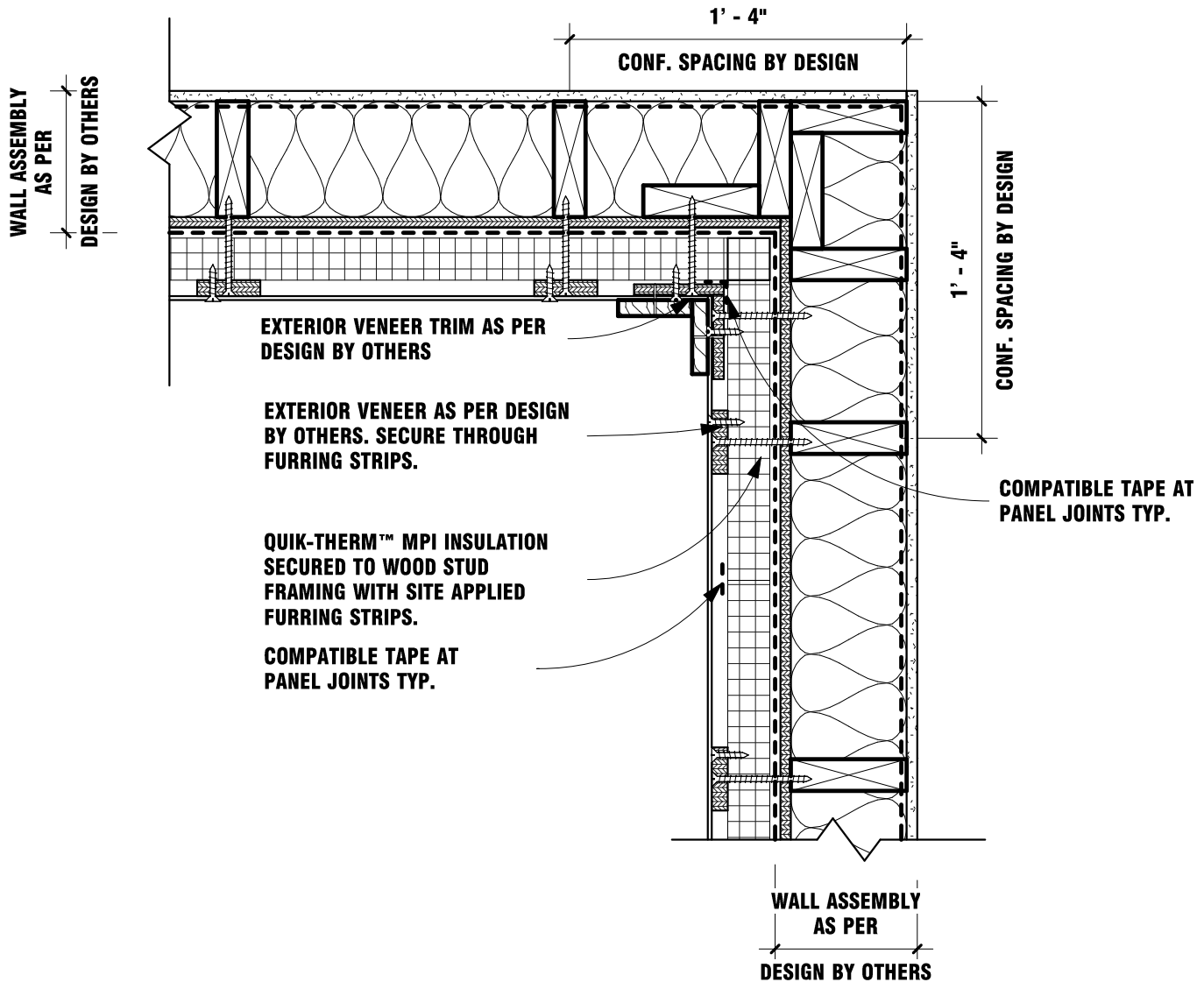
quiktherm.com (888) 735-3012 (204) 736-3012

QT-MPI-2

INSIDE CORNER

PLAN VIEW

1 1/2" = 1'-0"



QT-MPI INSIDE CORNER DETAIL



Quik-Therm Insulation Solutions Inc.

ENVELOPE DETAILS

Quik-Therm Multi-Purpose (MPI)

quiktherm.com (888) 735-3012 (204) 736-3012

QT-MPI-3

TOP AND BOTTOM WALL SECTION VIEW

1 1/2" = 1'-0"

WRAP AIR BARRIER MEMBRANE
AROUND QUIK-THERM™ MPI
INSULATION AT HEAD AND SILL OF
WALL ASSEMBLY

WALL ASSEMBLY
AS PER
DESIGN BY OTHERS

ROOF ASSEMBLY AS PER
DESIGN BY OTHERS

QUIK-THERM™ MPI INSULATION
SECURED TO WOOD STUD
FRAMING WITH SITE APPLIED
FURRING STRIPS.

EXTERIOR VENEER AS PER DESIGN
BY OTHERS. SECURE THROUGH
FURRING STRIPS.

COMPATIBLE TAPE AT PANEL
JOINTS TYP.

LAP AIR BARRIER OVER SELF
ADHERED WATERPROOF
MEMBRANE

LAP SELF ADHERED
WATERPROOF MEMBRANE OVER
PREFINISHED METAL DRIP EDGE

WRAP AIR BARRIER MEMBRANE
AROUND QUIK-THERM™ MPI
INSULATION AT HEAD AND SILL
OF WALL ASSEMBLY

INSECT SCREEN AT BOTTOM OF
STRAPPING

PREFINISHED METAL DRIP EDGE

FLOOR SYSTEM AS PER
DESIGN BY OTHERS

CLOSED CELL SPRAY FOAM INSULATION
AS PER DESIGN BY OTHERS

SILL PLATE WITH FOAM GASKET ON
FOUNDATION AS PER DESIGN BY OTHERS

QT-MPI TOP & BTM OF WALL DETAIL



Quik-Therm Insulation Solutions Inc.

ENVELOPE DETAILS

Quik-Therm Multi-Purpose (MPI)

quiktherm.com (888) 735-3012 (204) 736-3012

QT-MPI-4

NAIL ON FLANGE GLAZING
SECTION VIEW

1 1/2" = 1'-0"

EXTERIOR

QUIK-THERM™ MPI INSULATION
SECURED TO WOOD STUD
FRAMING WITH SITE APPLIED
FURRING STRIPS.

EXTERIOR VENEER AS PER DESIGN BY
OTHERS. SECURE THROUGH FURRING
STRIPS.

EXTERIOR VENEER TRIM AS PER
DESIGN BY OTHERS

LAP SELF ADHERED WATERPROOF
MEMBRANE OVER PREFINISHED
METAL DRIP EDGE

SELF ADHERED WATER PROOF
MEMBRANE AT GLAZING SILL

2x FRAMING BUILD OUT ALL
AROUND AS REQUIRED TO
SUPPORT GLAZING ASSEMBLY

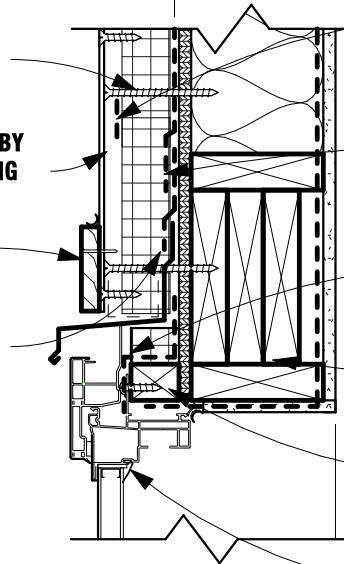
PREFINISHED METAL DRIP EDGE
OVER GLAZING SILL

EXTERIOR VENEER TRIM AS PER
DESIGN BY OTHERS

EXTERIOR VENEER AS PER DESIGN BY
OTHERS. SECURE THROUGH FURRING
STRIPS.

QUIK-THERM™ MPI INSULATION
SECURED TO WOOD STUD FRAMING
WITH SITE APPLIED FURRING
STRIPS.

WALL ASSEMBLY
AS PER
DESIGN BY OTHERS



INTERIOR

COMPATIBLE TAPE AT PANEL JOINTS

LAP BUILDING AIR BARRIER OVER
SELF ADHEARED WATER PROOF
MEMBRANE

SELF ADHERED WATER PROOF
MEMBRANE OVER GLAZING FLANGE

OPENING HEADER AS PER
DESIGN BY OTHERS

2x FRAMING BUILD OUT ALL
AROUND AS REQUIRED TO
SUPPORT GLAZING ASSEMBLY

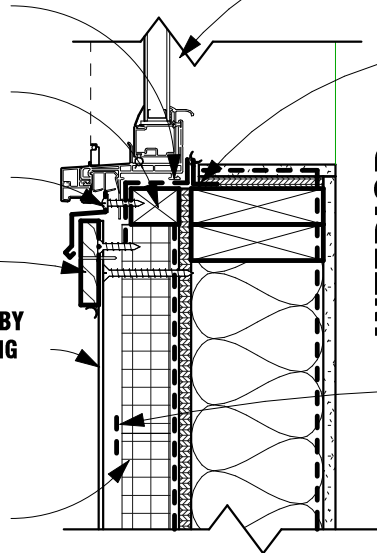
WINDOW ASSEMBLY
AS PER DESIGN BY
OTHERS

GLAZING BACKSTOP
ANGLE DAM AS PER
DESIGN BY OTHERS

COMPATIBLE TAPE AT PANEL
JOINTS

INTERIOR

WALL ASSEMBLY
AS PER
DESIGN BY OTHERS



NOTE: 2x BUILDOUT, AS INDICATED, REQUIRED AT NAIL ON
FLANGE WINDOWS. STORE-FRONT OR CURTAINWALL
GLAZING SYSTEMS DO NOT REQUIRE 2x BUILDOUT. ALIGN
THOSE WINDOWS WITH EXTERIOR FACE OF WALL
ASSEMBLY SHEATHING. REFER TO DESIGN GUIDANCE BY
DESIGN PROFESSIONAL

QT-MPI GLAZING HEAD AND SILL DETAIL



Quik-Therm Insulation Solutions Inc.

ENVELOPE DETAILS

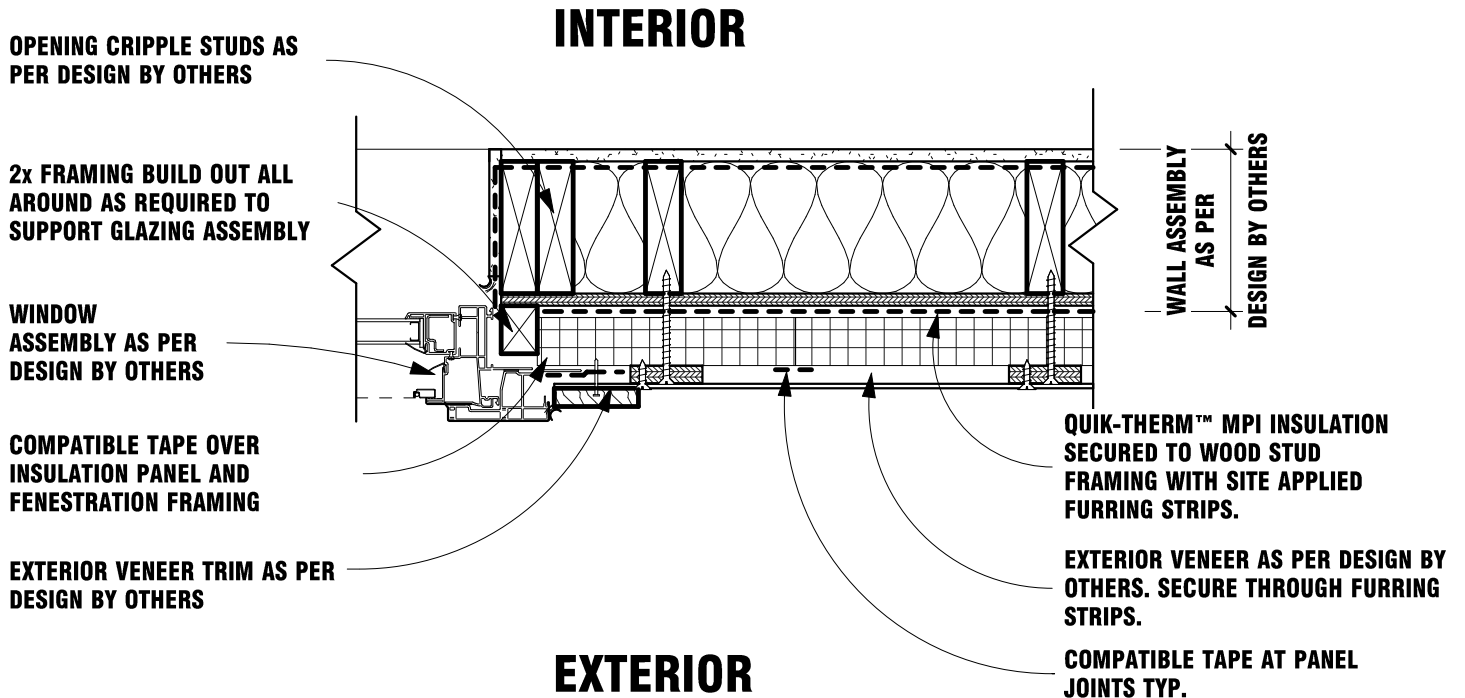
Quik-Therm Multi-Purpose (MPI)

quiktherm.com (888) 735-3012 (204) 736-3012

QT-MPI-5

NAIL ON FLANGE GLAZING
PLAN VIEW

1 1/2" = 1'-0"



QT-MPI GLAZING JAMB DETAIL



Quik-Therm Insulation Solutions Inc.

ENVELOPE DETAILS

Quik-Therm Multi-Purpose (MPI)

quiktherm.com (888) 735-3012 (204) 736-3012

QT-MPI-6

DOOR HEAD/JAMB DETAIL
PLAN & SECTION VIEW

1 1/2" = 1'-0"

EXTERIOR

QUIK-THERM™ MPI INSULATION
SECURED TO WOOD STUD FRAMING
WITH SITE APPLIED FURRING
STRIPS.

EXTERIOR VENEER AS PER DESIGN BY
OTHERS. SECURE THROUGH FURRING
STRIPS.

LAP SELF ADHERED AIR BARRIER
MEMBRANE OVER PREFINISHED
METAL DRIP EDGE

EXTERIOR VENEER TRIM AS PER
DESIGN BY OTHERS

SELF ADHERED
WATERPROOF MEMBRANE
OVER PREFINISHED METAL
DRIP EDGE

WALL ASSEMBLY
AS PER
DESIGN BY OTHERS

COMPATIBLE TAPE AT PANEL
JOINTS TYP.

OPENING HEADER AS PER
DESIGN BY OTHERS

INTERIOR

SECTION VIEW

DOOR FRAME AS PER
DESIGN BY OTHERS

INTERIOR

OPENING CRIPPLE STUDS AS
PER DESIGN BY OTHERS

WALL ASSEMBLY
AS PER
DESIGN BY OTHERS

SELF ADHERED
WATERPROOF MEMBRANE
AROUND OPENING & LAP
OVER BUILDING AIR
BARRIER

EXTERIOR VENEER TRIM AS PER
DESIGN BY OTHERS

COMPATIBLE TAPE AT PANEL
JOINTS TYP.

PLAN VIEW

EXTERIOR

QUIK-THERM™ MPI INSULATION
SECURED TO WOOD STUD FRAMING
WITH SITE APPLIED FURRING
STRIPS.

EXTERIOR VENEER AS PER DESIGN
BY OTHERS. SECURE THROUGH
QUIK-THERM™ INSULATION TO
BUILDING STRUCTURE

QT-MPI DOOR HEAD & JAMB DETAIL



Quik-Therm Insulation Solutions Inc.

ENVELOPE DETAILS

Quik-Therm Multi-Purpose (MPI)

quiktherm.com (888) 735-3012 (204) 736-3012

QT-MPI-7

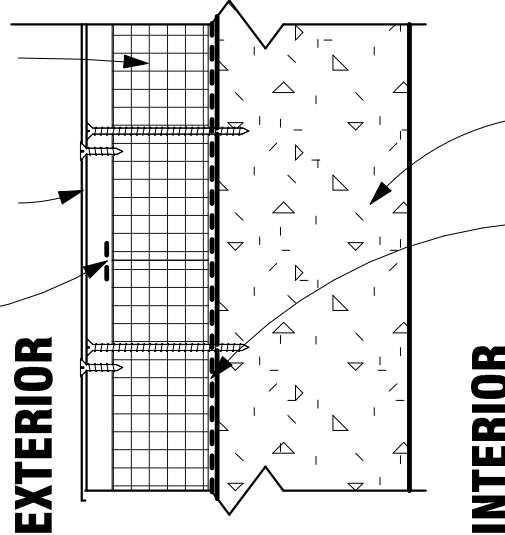
CONCRETE ATTACHMENTS
SECTION VIEW

1 1/2" = 1'-0"

QUIK-THERM™ MPI INSULATION
SECURED TO CONCRETE
SUBSTRATE WITH SITE APPLIED
FURRING STRIPS.

EXTERIOR VENEER AS PER DESIGN
BY OTHERS. SECURE THROUGH
FURRING STRIPS.

COMPATIBLE TAPE AT
JOINTS

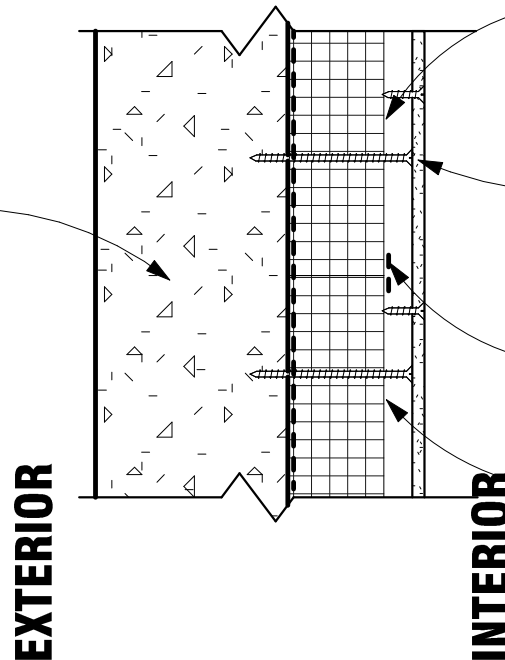


CONCRETE SUBSTRATE AS
PER DESIGN BY OTHERS

SELF ADHERED WATERPROOF
MEMBRANE TO SUBSTRATE

EXTERIOR APPLICATION

CONCRETE SUBSTRATE AS
PER DESIGN BY OTHERS



QUIK-THERM™ MPI INSULATION
SECURED TO CONCRETE SUBSTRATE
WITH SITE APPLIED FURRING
STRIPS.

INTERIOR GYPSUM SHEATHING AS
PER DESIGN BY OTHERS. SECURE
THROUGH QUIK-THERM™ WITH
SITE APPLIED FURRING STRIPS AT
16" CENTERS

COMPATIBLE TAPE AT
PANEL JOINTS TYP.

PROPERLY INSTALLED
QUIK-THERM™ MPI INSULATION
ACTS AS CODE COMPLIANT
VAPOUR BARRIER

INTERIOR APPLICATION

QT-MPI CONCRETE (INT & EXT)



Quik-Therm Insulation Solutions Inc.

ENVELOPE DETAILS

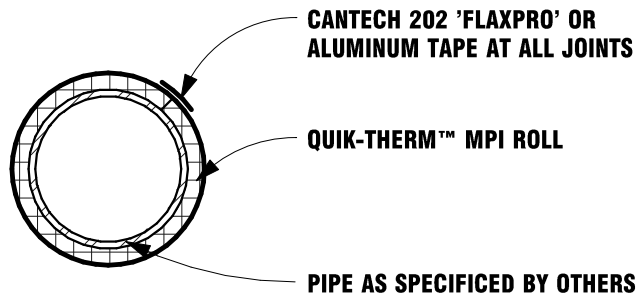
Quik-Therm Multi-Purpose (MPI)

quiktherm.com (888) 735-3012 (204) 736-3012

QT-MPI-8

PIPE WRAP DETAIL
SECTION VIEW

1 1/2" = 1'-0"



QT-MPI PIPE WRAP DETEAIL



Quik-Therm Insulation Solutions Inc.

ENVELOPE DETAILS

Quik-Therm Multi-Purpose (MPI)

quiktherm.com (888) 735-3012 (204) 736-3012

QT-MPI-9

NOTES 1

1 1/2" = 1'-0"

Handling & Storage Considerations Notes

1. Store product in a covered area, away from the elements and direct sunlight.
2. Protect product from damage. Although Quik-Therm MPI is rugged and durable, corners and edges are especially susceptible to damage during transport, storage and installation.
3. Although product is lightweight, it is typically shipped in bundles 1' thick consisting of several individual sheets.
4. Bundles may be awkward to handle due to their physical size. Use proper caution to avoid personal injury and/or physical damage to product.
5. Product has an EPS foam core. Keep away from extreme heat.
6. Avoid walking on uninstalled product.

Personal Protective Equipment Notes

Follow standard workplace safety protocols including (but not limited to) the use of eye and hearing protection, gloves, and dust masks as required.

Cutting Notes

1. The product can be cut using a variety of methods typical for standard foam board insulation, including (but not limited to):
 - Utility Knife
 - Hand Saw
 - Circular Saw
 - Table Saw
 - Hot Knife

Suggested Tools and Materials Notes

Hammer, Screw Gun and/or Nail Gun, Utility Knife & Blades, Hand Saw, Circular Saw, Spray Foam and adhesive (PL-300) or compatible adhesive with Polystyrene foam, Coated Deck Screws (Appropriate length), Hammer Drill (Concrete Only), 4' Level, Caulking Gun, Measuring Tape. Optional: Table Saw.

Basic Panel Installation Notes

1. MPI sheets are available in varying thicknesses, densities and compressive strengths to suit a variety of applications. 1/2" thick MPI rolls are ideal for insulating tanks, large pipes, below grade water mains, and other curved structures.
2. Ensure wall is smooth and free of debris.
3. Ensure MPI panels fit tightly together. To achieve a code compliant air and moisture barrier, foam and/or tape all joints/seams.
4. Use spray foams and/or adhesives compatible with polystyrene foam insulation (i.e. Hilti CF 812 and PL300). For cold weather applications, purchase cold weather spray foams or adhesives.
5. Adhere to local building codes, manufacturer instructions and best practices as outlined by a building design professional.
6. Wood or metal furring can be installed directly over MPI. Refer to FSC Guide.
7. For wood frame buildings over four to six stories please consult a design professional. Special installation details and fastener requirements apply.
8. Apply flashing, caulking, and peel & stick products to ensure that there is no moisture penetration.
9. Consult with your building professional and refer to peel and stick application recommendations.
10. Using appropriate fasteners, fasten through foam insulation to wall stud framing (see FSC Guide). Ensure Quik-Therm label is facing outwards.
11. For temporary fastening, plastic or metal washers and appropriate length screws are ideal for fastening MPI to wood or steel framing. Fasteners should be installed every 6" to 9" apart. Refer to FSC Guide
12. **Fastening to Concrete and Masonry:** IDP anchors ie: Hilti IDP or Simpson Mushroom Head Crimp Anchors with plastic or steel washers are ideal for fastening MPI to concrete and masonry walls and foundations.

Exterior Perforations Notes (Electrical Boxes / hose bibs etc)

Seal all exterior wall electrical boxes and other breaches using conventional code compliant techniques. Apply tapes and sealants to the Quik-Therm™ MPI Connect polymer film in the same manner as 6 mil polyethylene. Optional: Pressure sealed hard plastic electrical boxes with foam gaskets.



Quik-Therm Insulation Solutions Inc.

ENVELOPE DETAILS

Quik-Therm Multi-Purpose (MPI)

quiktherm.com (888) 735-3012 (204) 736-3012

QT-MPI-10

NOTES 2

1 1/2" = 1'-0"

Cladding Installation Notes

1. Lightweight siding materials such as vinyl or metal can be installed vertically or horizontally directly over MPI. Maximum 3" thickness.
2. Heavy cladding materials such as stucco or cement board siding require additional furring and/or sheathing. Please consult a design professional.

Air-Barrier Notes

1. Quik-Therm MPI meets code compliancy as an air and/or vapour barrier and a radon barrier. As part of the air barrier, MPI can be attached to building wrap, peel and stick and poly. Ensure all joints and corners in insulation are spray foamed and/or taped.
2. Although a wood frame building is shown, these general instructions are also applicable to metal framed structures.
3. In all cases, adhere to local building codes, manufacturer instructions and best practices as outlined by a building design professional.
4. See MPI Window and Door Air Barrier Detailing.

Canned Spray Foam Notes

1. Foam together tongue and groove and butt foam to foam connections. Spray foam must be compatible with expanded polystyrene (EPS) rigid foam.
2. Use spray foam to fill cracks and gaps between rigid foam and rigid foam and wood and around windows, doors, etc.
3. DO NOT use spray foam to create an air barrier connection to polymer facers. It DOESN'T create a structural bond.
4. DO NOT use spray foam in lieu of the poly foam gaskets or air barrier sealants.
5. For additional spray foam applications consult with a Design Professional.

Air Barrier Sealants Notes

1. Air Barrier sealants must be compatible with the Quik-Therm™ MPI polymer facers and rigid EPS foam. Recommendations: LePage Quad Max or Henry Air Bloc, or specified by a Design Professional.
2. Liquid applied air barrier sealants can be used to seal window and door nailing fins, etc. to Quik-Therm™ MPI polymer facers. See Installation Guidelines. Refer to Sealant Manufacturer's recommendations.
3. Air barrier sealants are not recommended for foam to foam and wide/large gap connections. Use spray foam to fill large gaps.

Construction Tape Notes

1. Tape all Quik-Therm™ MPI polymer faced tongue and groove and butt joint connections. Recommended Tape: 50500 Cantech Flashing Tape, or other tape specified by a Design Professional.
2. Tape Quik-Therm™ MPI polymer faced panels to wood, PVC, Fiberglass and metal window and door nailing fins.
3. Use minimum 4" wide tape for T&G connections, and vertical sides and bottom of windows and doors.
4. Use minimum 6" wide flashing tape for butt foam connections and along top of windows and doors.