



Quik-Therm Insulation Solutions Inc.

# ENVELOPE DETAILS

## Quik-Therm 936

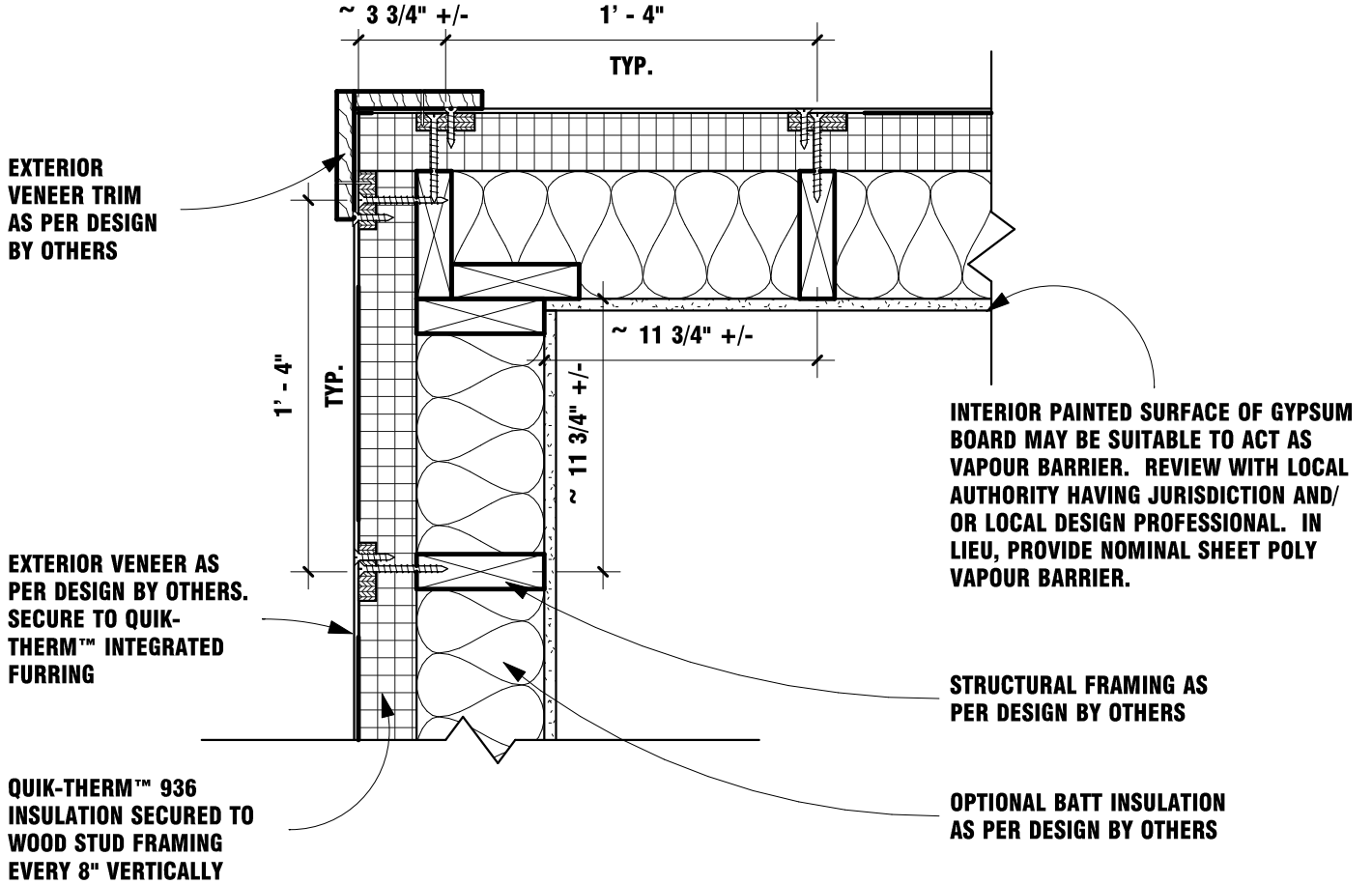
quiktherm.com (888) 735-3012 (204) 736-3012

# QT-936-1

## OUTSIDE CORNER PLAN VIEW

1 1/2" = 1'-0"

**\* PLAN AHEAD \* ENSURE  
CORNER FRAMING ALIGNS  
WITH QUIK-THERM™ 936  
FURRING SPACING**



# QT-936 OUTSIDE CORNER DETAIL



Quik-Therm Insulation Solutions Inc.

# ENVELOPE DETAILS

## Quik-Therm 936

quiktherm.com (888) 735-3012 (204) 736-3012

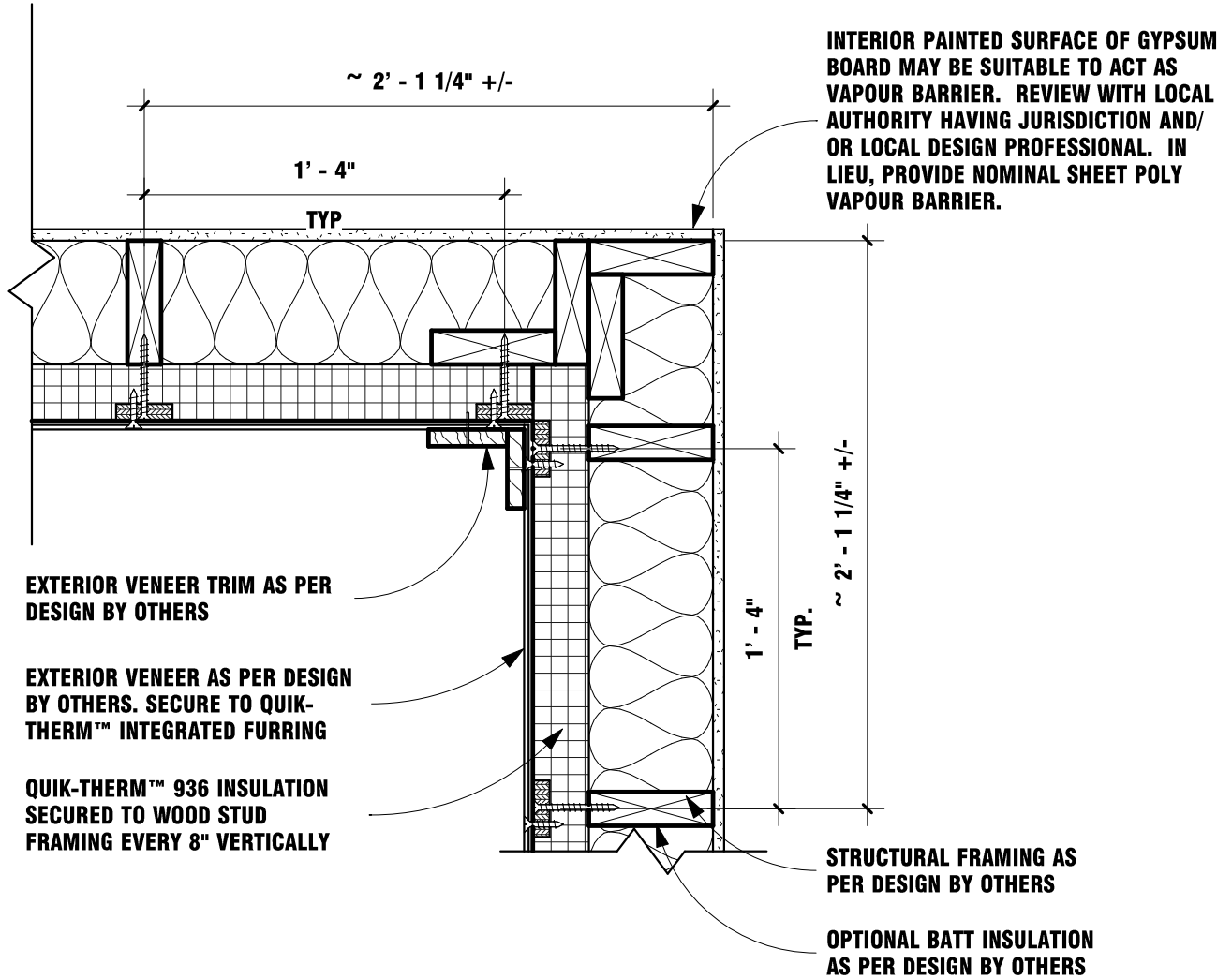
# QT-936-2

## INSIDE CORNER PLAN VIEW

1 1/2" = 1'-0"

**INSIDE CORNER QUIK-THERM™  
PANEL PREP.:**  
CUT FIRST 936 PANEL AT BATTEN  
LOCATION. CUT SECOND PANEL  
AT BATTEN LOCATION PLUS PANEL  
THICKNESS TO ALLOW PANELS TO  
OVERLAP IN CORNER.

**\* PLAN AHEAD \* ENSURE  
CORNER FRAMING ALIGNS  
WITH QUIK-THERM™ 936  
FURRING SPACING**



# QT-936 INSIDE CORNER DETAIL



Quik-Therm Insulation Solutions Inc.

# ENVELOPE DETAILS

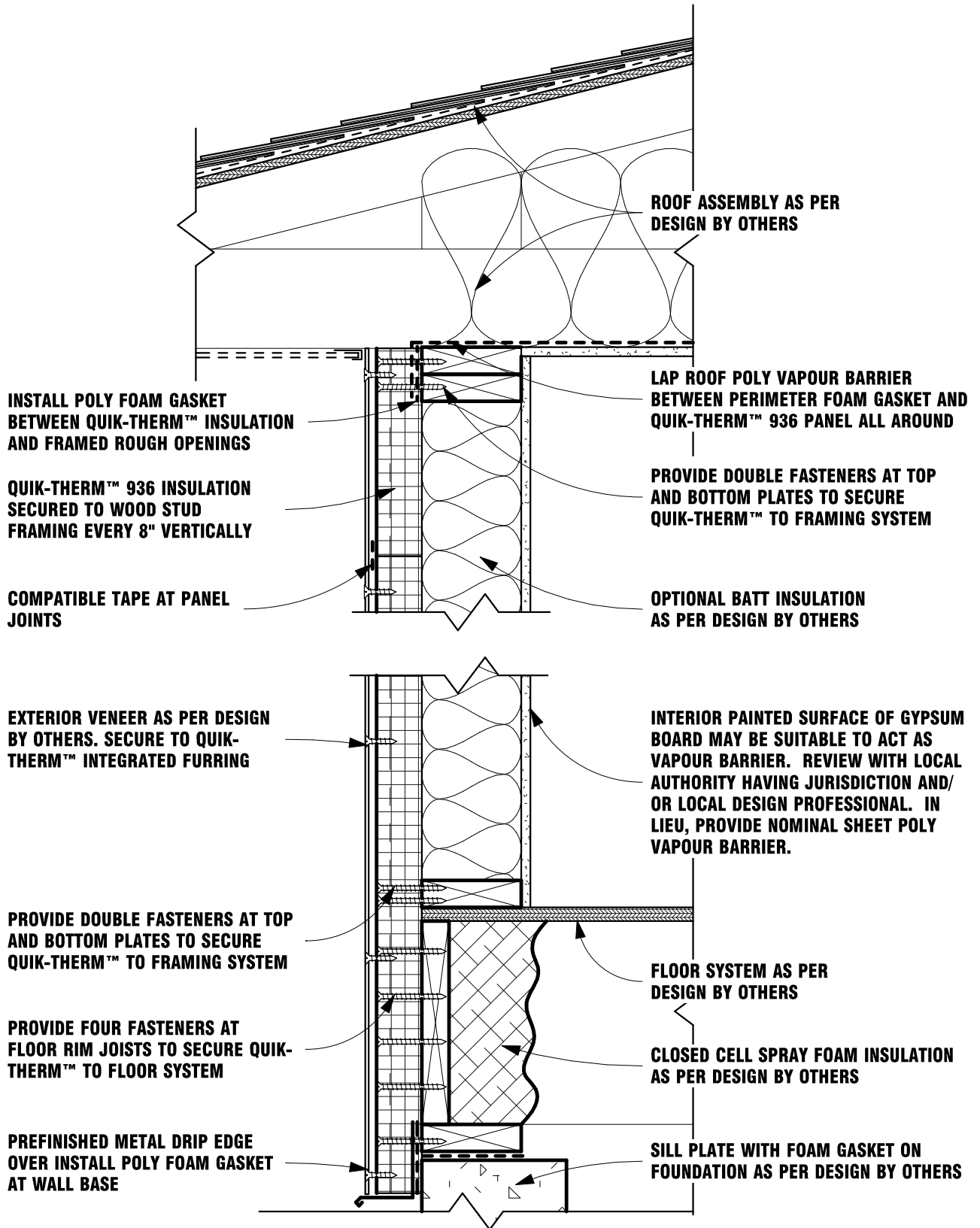
## Quik-Therm 936

quiktherm.com (888) 735-3012 (204) 736-3012

# QT-936-3

## TOP AND BOTTOM WALL SECTION VIEW

1 1/2" = 1'-0"



# QT-936 TOP & BTM OF WALL DETAIL



Quik-Therm Insulation Solutions Inc.

# ENVELOPE DETAILS

## Quik-Therm 936

quiktherm.com (888) 735-3012 (204) 736-3012

# QT-936-4

## NAIL ON FLANGE GLAZING SECTION VIEW

1 1/2" = 1'-0"

**EXTERIOR**

QUIK-THERM™ 936 INSULATION SECURED TO WOOD STUD FRAMING EVERY 8" VERTICALLY

EXTERIOR VENEER AS PER DESIGN BY OTHERS. SECURE TO QUIK-THERM™ INTEGRATED FURRING

INSTALL POLY FOAM GASKET BETWEEN QUIK-THERM™ INSULATION AND FRAMED ROUGH OPENINGS

LAP COMPATIBLE TAPE OVER PREFINISHED METAL DRIP EDGE

EXTERIOR VENEER TRIM AS PER DESIGN BY OTHERS

COMPATIBLE TAPE OVER INSULATION PANEL AND FENESTRATION FRAMING

2x FRAMING BUILD OUT ALL AROUND AS REQUIRED TO SUPPORT GLAZING ASSEMBLY

WINDOW ASSEMBLY AS PER DESIGN BY OTHERS

SELF ADHERED WATER PROOF MEMBRANE AT GLAZING SILL

2x FRAMING BUILD OUT ALL AROUND AS REQUIRED TO SUPPORT GLAZING ASSEMBLY

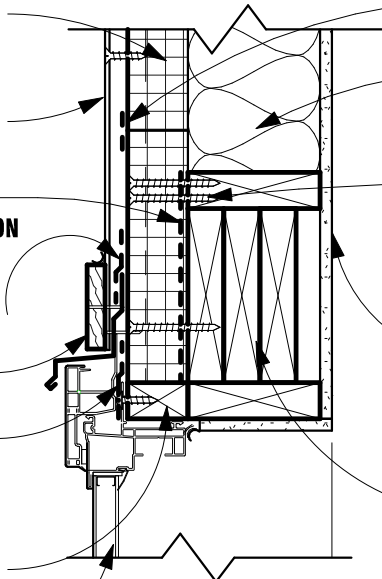
PREFINISHED METAL DRIP EDGE OVER GLAZING SILL

EXTERIOR VENEER TRIM AS PER DESIGN BY OTHERS

INSTALL POLY FOAM GASKET BETWEEN QUIK-THERM™ INSULATION AND FRAMED ROUGH OPENINGS

EXTERIOR VENEER AS PER DESIGN BY OTHERS. SECURE TO QUIK-THERM™ INTEGRATED FURRING

QUIK-THERM™ 936 INSULATION SECURED TO WOOD STUD FRAMING EVERY 8" VERTICALLY



COMPATIBLE TAPE AT PANEL JOINTS

OPTIONAL BATT INSULATION AS PER DESIGN BY OTHERS

PROVIDE DOUBLE FASTENERS AT ROUGH OPENING PLATES TO SECURE QUIK-THERM™ TO FRAMING SYSTEM

INTERIOR PAINTED SURFACE OF GYPSUM BOARD MAY BE SUITABLE TO ACT AS VAPOUR BARRIER. REVIEW WITH LOCAL AUTHORITY HAVING JURISDICTION AND/OR LOCAL DESIGN PROFESSIONAL. IN LIEU, PROVIDE NOMINAL SHEET POLY VAPOUR BARRIER.

OPENING HEADER AS PER DESIGN BY OTHERS

**INTERIOR**

**EXTERIOR**

GLAZING BACKSTOP ANGLE DAM AS PER DESIGN BY OTHERS

PROVIDE DOUBLE FASTENERS AT ROUGH OPENING PLATES TO SECURE QUIK-THERM™ TO FRAMING SYSTEM

INTERIOR PAINTED SURFACE OF GYPSUM BOARD MAY BE SUITABLE TO ACT AS VAPOUR BARRIER. REVIEW WITH LOCAL AUTHORITY HAVING JURISDICTION AND/OR LOCAL DESIGN PROFESSIONAL. IN LIEU, PROVIDE NOMINAL SHEET POLY VAPOUR BARRIER.

OPTIONAL BATT INSULATION AS PER DESIGN BY OTHERS

COMPATIBLE TAPE AT PANEL JOINTS

**INTERIOR**

# QT-936 GLAZING HEAD AND SILL DETAIL



Quik-Therm Insulation Solutions Inc.

# ENVELOPE DETAILS

Quik-Therm 936

quiktherm.com (888) 735-3012 (204) 736-3012

# QT-936-5

NAIL ON FLANGE GLAZING  
PLAN VIEW

1 1/2" = 1'-0"

OPENING CRIPPLE STUDS AS PER DESIGN BY OTHERS

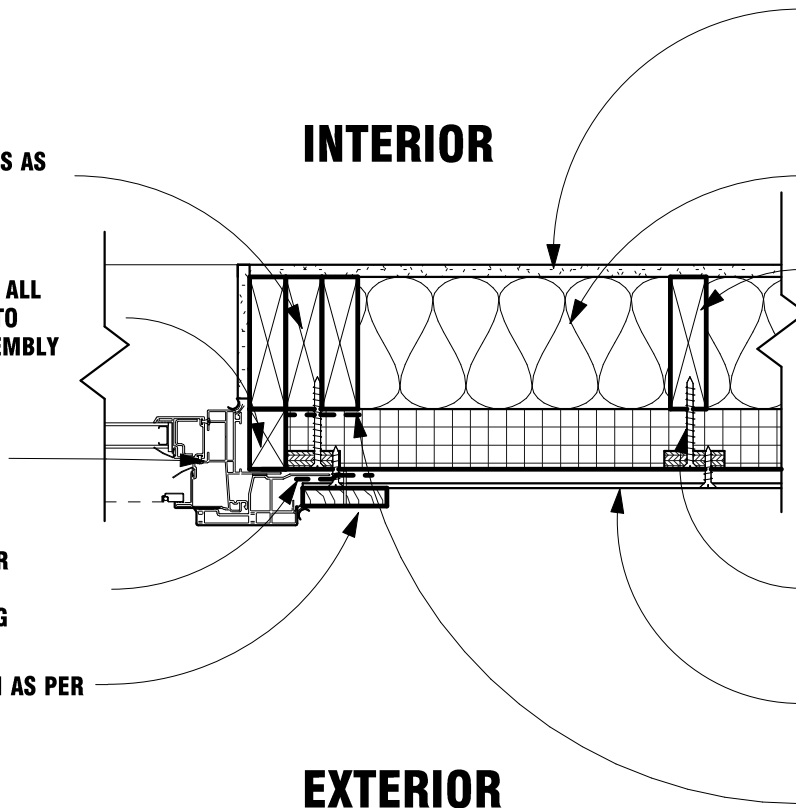
2x FRAMING BUILD OUT ALL AROUND AS REQUIRED TO SUPPORT GLAZING ASSEMBLY

WINDOW ASSEMBLY AS PER DESIGN BY OTHERS

COMPATIBLE TAPE OVER INSULATION PANEL AND FENESTRATION FRAMING

EXTERIOR VENEER TRIM AS PER DESIGN BY OTHERS

INTERIOR



EXTERIOR

INTERIOR PAINTED SURFACE OF GYPSUM BOARD MAY BE SUITABLE TO ACT AS VAPOUR BARRIER. REVIEW WITH LOCAL AUTHORITY HAVING JURISDICTION AND/OR LOCAL DESIGN PROFESSIONAL. IN LIEU, PROVIDE NOMINAL SHEET POLY VAPOUR BARRIER.

OPTIONAL BATT INSULATION AS PER DESIGN BY OTHERS

STRUCTURAL FRAMING AS PER DESIGN BY OTHERS

QUIK-THERM™ 936 INSULATION SECURED TO WOOD STUD FRAMING EVERY 8" VERTICALLY

EXTERIOR VENEER AS PER DESIGN BY OTHERS. SECURE TO QUIK-THERM™ INTEGRATED FURRING

INSTALL POLY FOAM GASKET BETWEEN QUIK-THERM™ INSULATION AND FRAMED ROUGH OPENINGS

## QT-936 GLAZING JAMB DETAIL



Quik-Therm Insulation Solutions Inc.

# ENVELOPE DETAILS

## Quik-Therm 936

quiktherm.com (888) 735-3012 (204) 736-3012

# QT-936-6

## DOOR HEAD/JAMB DETAIL PLAN & SECTION VIEW

1 1/2" = 1'-0"

**EXTERIOR**

**INTERIOR**

QUIK-THERM™ 936 INSULATION  
SECURED TO WOOD STUD  
FRAMING EVERY 8" VERTICALLY

EXTERIOR VENEER AS PER DESIGN  
BY OTHERS. SECURE TO QUIK-  
THERM™ INTEGRATED FURRING

INSTALL POLY FOAM GASKET  
BETWEEN QUIK-THERM™ INSULATION  
AND FRAMED ROUGH OPENINGS

LAP COMPATIBLE TAPE OVER  
PREFINISHED METAL DRIP EDGE

EXTERIOR VENEER TRIM AS PER  
DESIGN BY OTHERS

COMPATIBLE TAPE BETWEEN  
INSULATION PANEL AND  
FENESTRATION FRAMING

DOOR FRAME AS PER  
DESIGN BY OTHERS

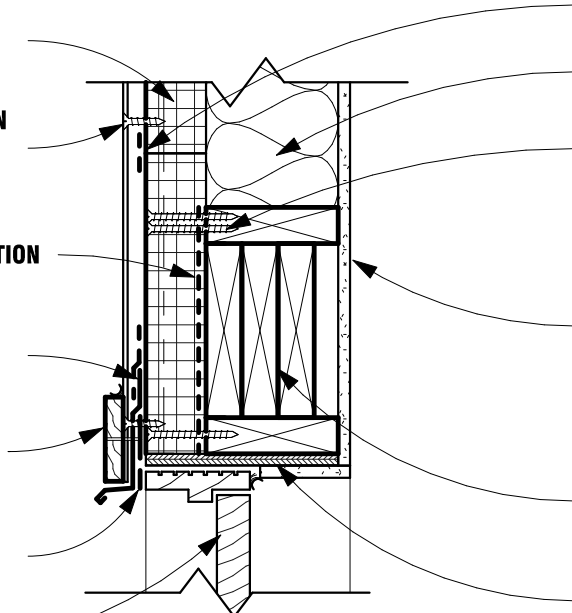
COMPATIBLE TAPE AT PANEL  
JOINTS

OPTIONAL BATT INSULATION  
AS PER DESIGN BY OTHERS  
PROVIDE DOUBLE FASTENERS AT  
ROUGH OPENING PLATES TO SECURE  
QUIK-THERM™ TO FRAMING SYSTEM

INTERIOR PAINTED SURFACE OF  
GYPSUM BOARD MAY BE SUITABLE  
TO ACT AS VAPOUR BARRIER.  
REVIEW WITH LOCAL AUTHORITY  
HAVING JURISDICTION AND/ OR  
LOCAL DESIGN PROFESSIONAL. IN  
LIEU, PROVIDE NOMINAL SHEET  
POLY VAPOUR BARRIER.

OPENING HEADER AS PER  
DESIGN BY OTHERS

PLYWOOD FRAMING PROJECTION  
AROUND DOOR ROUGH OPENING AS  
REQUIRED TO SUPPORT DOOR FRAME



**SECTION VIEW**

OPENING CRIPPLE STUDS AS  
PER DESIGN BY OTHERS

PLYWOOD FRAMING  
PROJECTION AROUND  
DOOR ROUGH OPENING  
AS REQUIRED TO  
SUPPORT DOOR FRAME

DOOR FRAME AS PER  
DESIGN BY OTHERS

INSTALL POLY FOAM  
GASKET BETWEEN  
QUIK-THERM™  
INSULATION AND  
FRAMED ROUGH  
OPENINGS

LAP COMPATIBLE TAPE BETWEEN  
INSULATION PANEL AND  
FENESTRATION FRAMING

EXTERIOR VENEER TRIM AS PER  
DESIGN BY OTHERS

**INTERIOR**

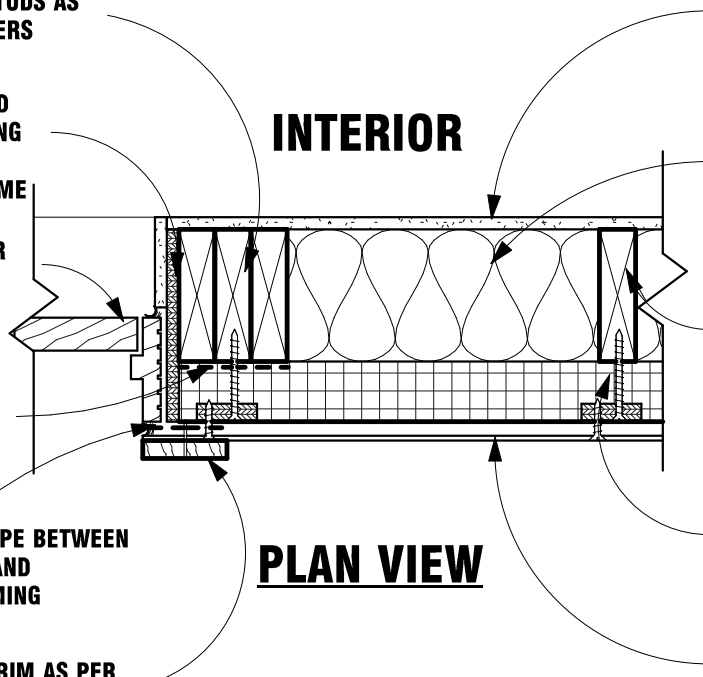
INTERIOR PAINTED SURFACE OF GYPSUM  
BOARD MAY BE SUITABLE TO ACT AS  
VAPOUR BARRIER. REVIEW WITH LOCAL  
AUTHORITY HAVING JURISDICTION AND/  
OR LOCAL DESIGN PROFESSIONAL. IN  
LIEU, PROVIDE NOMINAL SHEET  
POLY VAPOUR BARRIER.

OPTIONAL BATT INSULATION  
AS PER DESIGN BY OTHERS

STRUCTURAL FRAMING AS  
PER DESIGN BY OTHERS

QUIK-THERM™ 936 INSULATION  
SECURED TO WOOD STUD  
FRAMING EVERY 8" VERTICALLY

EXTERIOR VENEER AS PER DESIGN  
BY OTHERS. SECURE TO QUIK-  
THERM™ INTEGRATED FURRING



**PLAN VIEW**

**EXTERIOR**

# QT-936 DOOR HEAD & JAMB DETAIL



Quik-Therm Insulation Solutions Inc.

## ENVELOPE DETAILS

### Quik-Therm 936

quiktherm.com (888) 735-3012 (204) 736-3012

## QT-936-7

### NOTES 1

1 1/2" = 1'-0"

## Handling & Storage Considerations Notes

1. Store product in a covered area, away from the elements and direct sunlight.
2. Protect product from damage. Although Quik-Therm 936 is rugged and durable, corners and edges are especially susceptible to damage during transport, storage and installation.
3. Although product is lightweight, it is typically shipped in bundles 1' thick consisting of several individual sheets.
4. Bundles may be awkward to handle due to their physical size. Use proper caution to avoid personal injury and/or physical damage to product.
5. Product has an EPS foam core. Keep away from extreme heat.
6. Avoid walking on uninstalled product.

## Personal Protective Equipment Notes

1. Follow standard workplace safety protocols including (but not limited to) the use of eye and hearing protection, gloves, and dust masks as required.

## Cutting Notes

1. The product can be cut using a variety of methods typical for standard foam board insulation, including (but not limited to):
  - Utility Knife
  - Hand Saw
  - Circular Saw
  - Table Saw
  - Hot Knife

## Suggested Tools and Materials Notes

1. Hammer, Screw Gun and/or Nail Gun, Utility Knife & Blades, Hand Saw, Circular Saw, Spray Foam and adhesive (PL-300) or compatible adhesive with Polystyrene foam, Coated Deck Screws (Appropriate length), Hammer Drill (Concrete Only), 4' Level, Caulking Gun, Measuring Tape. Optional: Table Saw.

## Basic Panel Installation Notes

1. 6 mil poly, OSB and House Wrap are not required for the Quik-Therm™ 936 assembly. See Hygrothermal Analysis in product line documentation.
2. First stud at corner spaced to fasten panel furring strips at corners for attaching corner molding.
3. Remainder of framing must maintain 16" O.C. TIP: Use 14.5" long temporary blocking to help straighten crooked studs.
4. Ensure studs above windows/doors and below windows follow 16" O.C. spacing to accommodate panel installation.
5. White 3/16" poly foam gasket over double top plate and sill plate area.
6. Ensure all nailing strips are connected to a framing member as per fastening schedule and penetrate into studs minimum 0.75" (Engineered by Morrison Hershfield).
7. Spray foam and/or tape panel connections together. Spray foam is considered best practice. Fill all voids with spray foam.
8. Butt end panels together minimum 8" up from bottom plate. Connections can be staggered or in-line. Butt end nailing strips must be connected to a framing member.
9. To compress panels tight to framing, stand on nailing strips over studs when fastening.
10. It is recommended to use building paper between cementitious stucco and the Quik-Therm™ 936 panel film.
11. Cut corner panels so that plywood furring strips are fastened to corner framing members as per fastening schedules and penetrate into studs minimum 0.75" (Engineered by Morrison Hershfield).
12. Foam corner panels together using canned spray foam. Fill voids with spray foam.
13. Ensure corner furring strips are positioned to accommodate secure fastening of corner moldings. Cut panels to achieve overlap at corners.
14. Typical construction shown. Please refer to design drawings specific to your application. Confirm/consult with a design professional.
15. The information presented herein is based upon data considered accurate. Quik-Therm Insulation Solutions Inc. does not assume any responsibility for any misrepresentation or assumptions the reader may formulate. Check with local building codes prior to installing Quik-Therm™ 936 Connect.

## Exterior Perforations Notes (Electrical Boxes / hose bibs etc)

1. Seal all exterior wall electrical boxes and other breaches using conventional code compliant techniques. Apply tapes and sealants to the Quik-Therm™ 936 Connect polymer film in the same manner as 6 mil polyethylene. Optional: Pressure sealed hard plastic electrical boxes with foam gaskets.



Quik-Therm Insulation Solutions Inc.

## ENVELOPE DETAILS

### Quik-Therm 936

quiktherm.com (888) 735-3012 (204) 736-3012

## QT-936-8

### NOTES 2

1 1/2" = 1'-0"

## Horizontal Installation Notes

1. Typical construction shown. Please refer to design drawings specific to your application. Confirm/consult with design professional prior to installing Quik-Therm products.
2. Two framing nails (minimum 3.25" long) fasten furring strips to studs, corners, top plates, bottom plate and rim joists.
3. Top horizontal furring strip to be fastened maximum 1" from top of top plate.
4. Butt ends to connect over studs (just like OSB sheathing). \*\* For locations where butt ends don't align center over a stud, an extra stud must be incorporated. Studs can be installed conventional or flat orientation.
5. Cladding weight. Maximum 5 lb. per sq ft. \*\* For over 5 lb. cladding and cementitious stucco - install Quick-Therm™ 936 Connect in a vertical orientation - or as specified by a Design Professional.
6. Install cladding per manufacturers recommendations/specifications. It is recommended to use building paper between cementitious stucco and the Quick-Therm™ 936 panel film. Masonry cladding: Consult with a Design Professional.
7. The information presented herein is based upon data considered accurate. Quik-Therm Insulation Solutions Inc. does not assume any responsibility for any misrepresentation or assumptions the reader may formulate. Please check local building codes prior to installing Quik-Therm products.

## Fastening Notes

1. Framing nail heads to be flush with furring strip top surface. Do not drive nail heads into furring.
2. Framing nails through 2 1/2" thick Quick-Therm™ 936 Connect to framing must achieve minimum 0.75" embedment into framing (Engineered by Morrison Hershfield).
3. For typical vertical application/orientation's. Space nails 8" apart along furring strips.
4. Horizontal applications (furring perpendicular to studs). 2 nails per furring strip into each framing member - @16" O.C.
5. Use multiple fasteners at plates and rim joists.
6. Commonly used Quick-Therm™ 936 cladding materials. Cementitious Stucco (vertical orientation only), Cement Board, Metal, Wood, Composite, etc.
7. Consult with a Design Professional

## Canned Spray Foam Notes

1. Foam together tongue and groove and butt foam to foam connections. Spray foam must be compatible with expanded polystyrene (EPS) rigid foam.
2. Use spray foam to fill cracks and gaps between rigid foam and rigid foam and wood and around windows, doors, etc.
3. DO NOT use spray foam to create an air barrier connection to polymer facers. It DOESN'T create a structural bond.
4. DO NOT use spray foam in lieu of the poly foam gaskets or air barrier sealants.
5. For additional spray foam applications consult with a Design Professional.

## Air Barrier Sealants Notes

1. To complete an air barrier gasket connection, a 1/4" continuous bead of liquid applied air barrier sealant can be used to seal 3/16" poly foam gasket. The poly gasket and sealants are interchangeable.
2. Air Barrier sealants must be compatible with the Quick-Therm™ 936 polymer facers and rigid EPS foam. Recommendations: LePage Quad Max or Henry Air Bloc, or specified by a Design Professional.
3. Liquid applied air barrier sealants can be used to seal window and door nailing fins, etc. to Quick-Therm™ 936 polymer facers. See Installation Guidelines. Refer to Sealant Manufacturer's recommendations.
4. Air barrier sealants are not recommended for foam to foam and wide/large gap connections. Use spray foam to fill large gaps.

## Construction Tape Notes

1. Tape all Quick-Therm™ 936 polymer faced tongue and groove and butt joint connections. Recommended Tape: 50500 Cantech Flashing Tape, or other tape specified by a Design Professional.
2. Tape Quick-Therm™ 936 polymer faced panels to wood, PVC, Fiberglass and metal window and door nailing fins.
3. Use minimum 4" wide tape for T&G connections, and vertical sides and bottom of windows and doors.
4. Use minimum 6" wide flashing tape for butt foam connections and along top of windows and doors.

## Rim Joist Notes

Recommendation: For best air barrier performance Quick-Therm™ 936 Connect should terminate below the rim joist/foundation connection. Using 3/16" poly foam gasket or air barrier sealants create an air barrier seal/gasket between Quick-Therm™ 936 Connect and the foundation or seal the rim joist/foundation connection as specified by a Design Professional