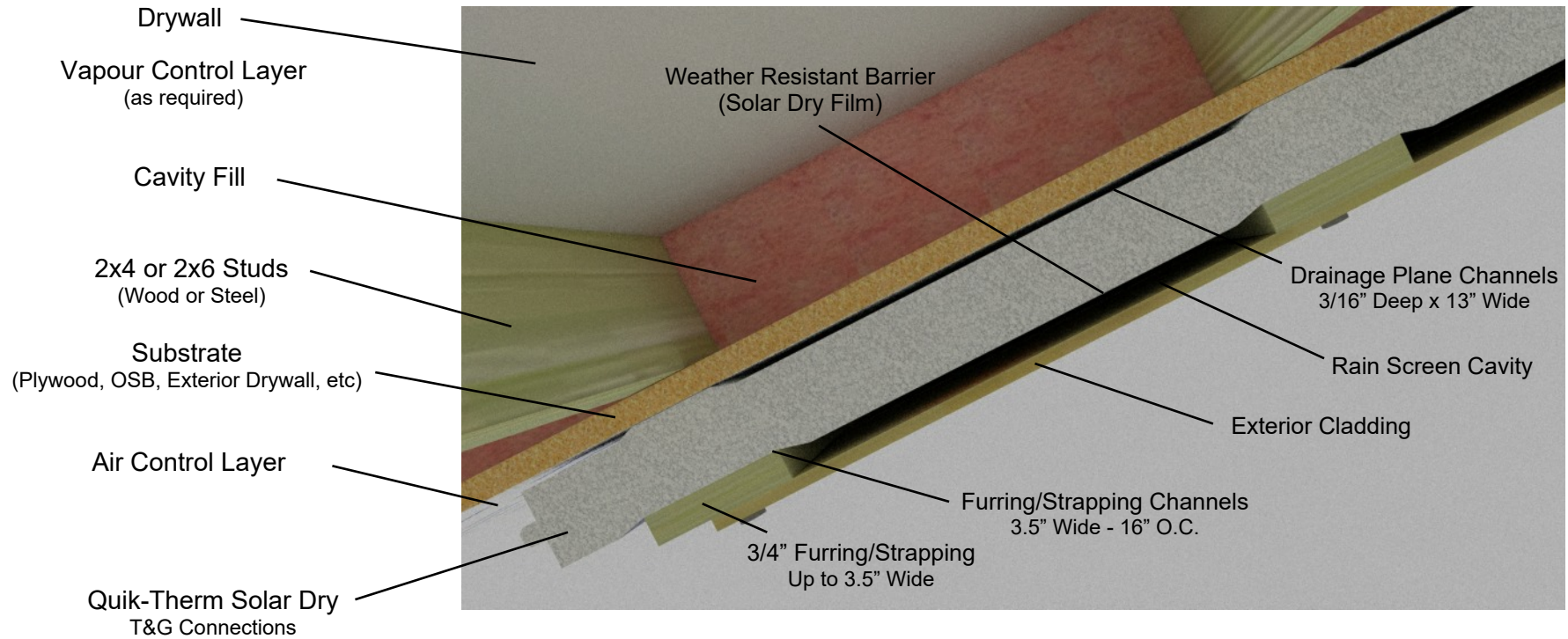




# Quik-Therm Solar Dry (SDI)



## ASTM C1363

Effective R-Value Testing and Energy Modelling

## Tested

- 2" Solar Dry with Empty Cavity: Effective R-13.2
- 2" Solar Dry and R-12 Fiberglass: Effective R-22.1

## Modelled / ASHRAE

- 1.5" Solar Dry with Empty Cavity: Effective R-10.75
- 1.5" Solar Dry and R-12 Fiberglass: Effective R-20.55
- 1.5" Solar Dry and R-20 Fiberglass: Effective R-26.55
- 2" Solar Dry and R-20 Fiberglass: Effective R-28.3

**NOTE:** Substitute mineral wool insulation for fiberglass - add an effective R-1 to the assembly.