



1 888 735-3012  
quiktherm.com

# TECHNICAL DATA SHEET

**ID. QT SDI**  
**April 2019**

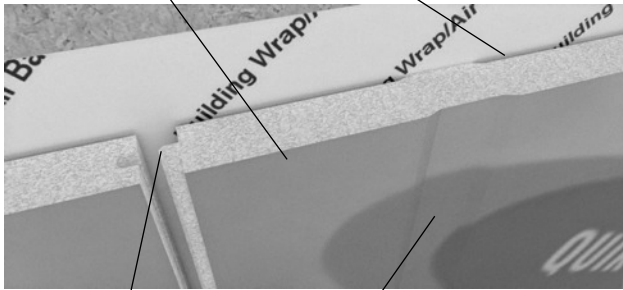
## Quik-Therm Solar Dry (SDI)

### Solar Dry Panel

1.2 m wide x 2.4 m long (4' x 8')  
3.8 cm to 15 cm (1½" to 6") Thick

### Drainage Plane

0.5 cm (3/16") deep x 33 cm (13") wide channels  
allow walls to breathe, dry and drain



### Furring Strip Channels

9 cm (3.5") channels every 40 cm (16")  
help to pre-align furring strips over wall studs  
to establish a code compliant rain screen

### Tongue & Groove Connections

1.3 cm x 1.3 cm (1/2" x 1/2")

*Meets CAN/ULC S701-05 / CCMC #13457-L*

Quik-Therm Solar Dry (SDI) is manufactured using Type 2 closed-cell expanded polystyrene (EPS) with advanced perforated metallic polymer facers. Located on the inboard side of SDI are drainage cavities that occupy 75% of its surface. These cavities allow walls to drain, dry and disperse moisture. On the outboard side, 1.9 cm (3/4") thick furring strips are mechanically fastened through SDI panels directly to framing members. The location for furring is identified by shallow depressions in SDI panels. 1.9 cm (3/4") thick furring between SDI panels and cladding achieves a code compliant rain screen. Cladding materials such as cement board cladding are fastened to the furring strips. Quik-Therm Solar Dry has been tested in accordance with CAN/ULC S-701. SDI is durable and does not easily chip crack or break. There is no thermal drift and its R-value will remain stable over its entire service life. SDI does not contain dyes, formaldehyde or blowing agents. It may contain up to 15% recycled EPS.

- Effective R-value tested to ASTM C1363 "Standard Test Method for Thermal Performance of Building Materials and Envelope Assemblies".
- Tested to ASTM E96 "Standard Test Method for Vapor Transmission of Materials". SDI is semi-permeable. Walls drain & dry to the outside. Qualifies as a secondary WRB (Weather Resistive Barrier).
- Tested to CAN/ULC S101-14 "Standard Methods of Fire Endurance Tests of Building Construction and Materials". Up to six story wood frame. Maximum 15.24 cm (6") thick SDI. Special fasteners and installation details apply.

**NOTE:** For typical wall designs and Effective R-value ratings, please see back of page.

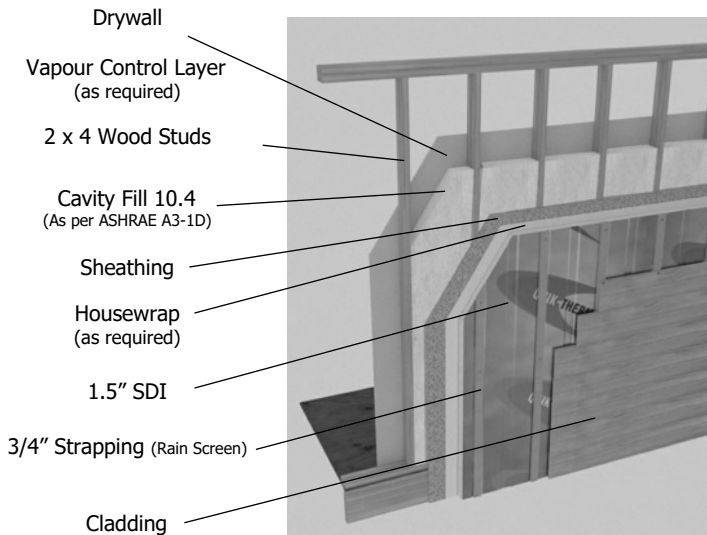
Characteristic	Units	Nominal Value	Test Method
Dimensional Stability - Maximum Linear Change	%	1.5	ASTM D2126
Length Tolerance	mm (in)	±3.2 (±0.125)	—
Width Tolerance	mm (in)	±1.6 (±.063)	—
Nominal R-Value	—	4.2	ASTM C518
Water Vapour Transmission (results pending)	Perms (ng)	>1.0 (110)	ASTM E96
Density (Type 2)	kg/m <sup>3</sup> (lbs/ft <sup>3</sup> )	23 (1.4)	ASTM D1622-03
Compressive Strength (Type 2)	kPa (psi)	136 (19.7)	ASTM D1621-04a
Long Term Thermal Resistance (LTTR)	Thermal Resistance Remains Stable Over Life of Service		
Flexural Strength (Type 2)	kPa (psi)	257 (37.3)	ASTM C203-05
Limiting Oxygen Index	%	26	ASTM D2863-97
Flame Spread Index	—	250	CAN/ULC - S102.2
Smoke Density Index	—	410	CAN/ULC - S102.2

*The information on this Technical Data sheet is based upon data considered accurate. Quik-Therm Insulation Solutions Inc. does not assume any responsibility for any misrepresentation or assumptions the reader may formulate.*



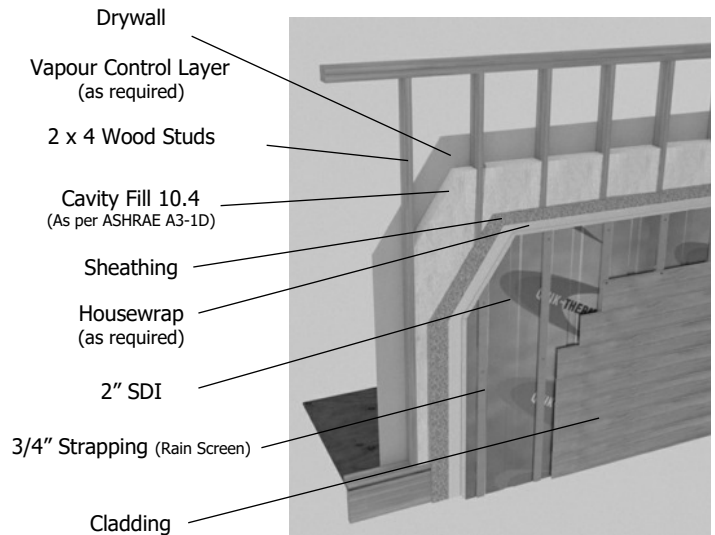
Tested By Canadian Accredited Laboratories. Supported By Building Science Engineering

## Code Compliant Part 9



### **Effective R-20.5**

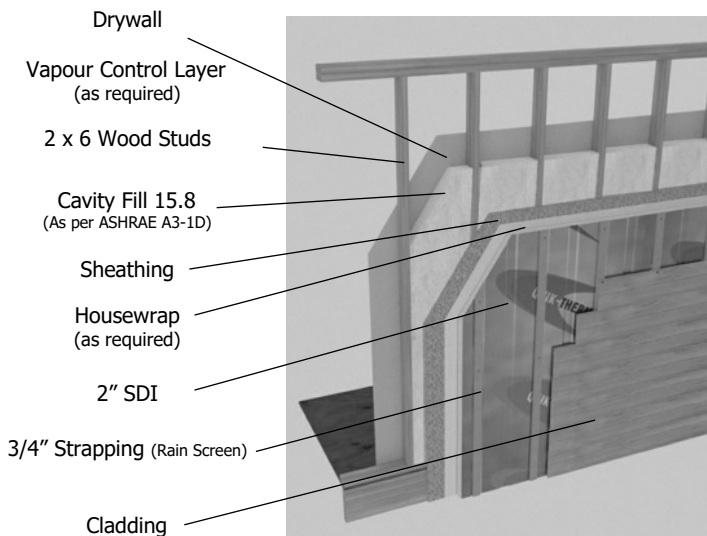
Code Compliant for Zones 5, 6, 7, 8



### **Effective R-22.1**

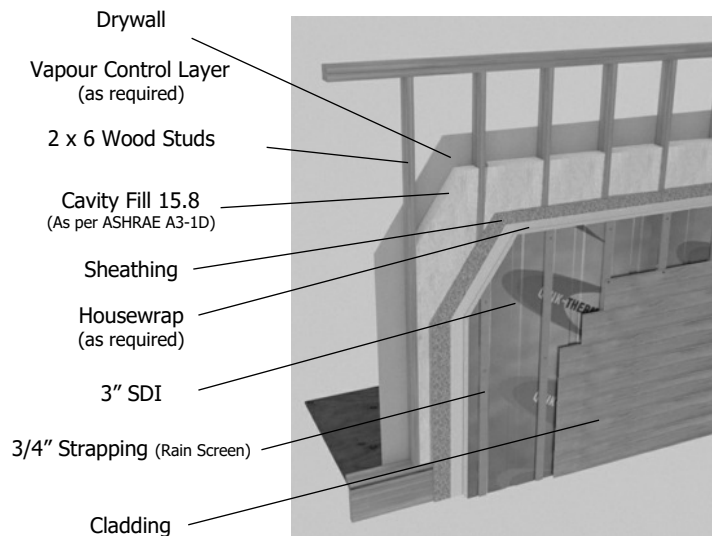
Code Compliant for Zones 5, 6, 7, 8

## Code Compliant Part 3 / NECB 2011



### **Effective R-28.3**

Code Compliant for Zones 5, 6, 7



### **Effective R-32.8**

Code Compliant for Zones 5, 6, 7, 8