



Quik-Therm Insulation Solutions Inc.

ENVELOPE DETAILS

Quik-Therm T&G Connect (TGC)

quiktherm.com (888) 735-3012 (204) 736-3012

QT-TGC-1

OUTSIDE CORNER PLAN VIEW

1 1/2" = 1'-0"

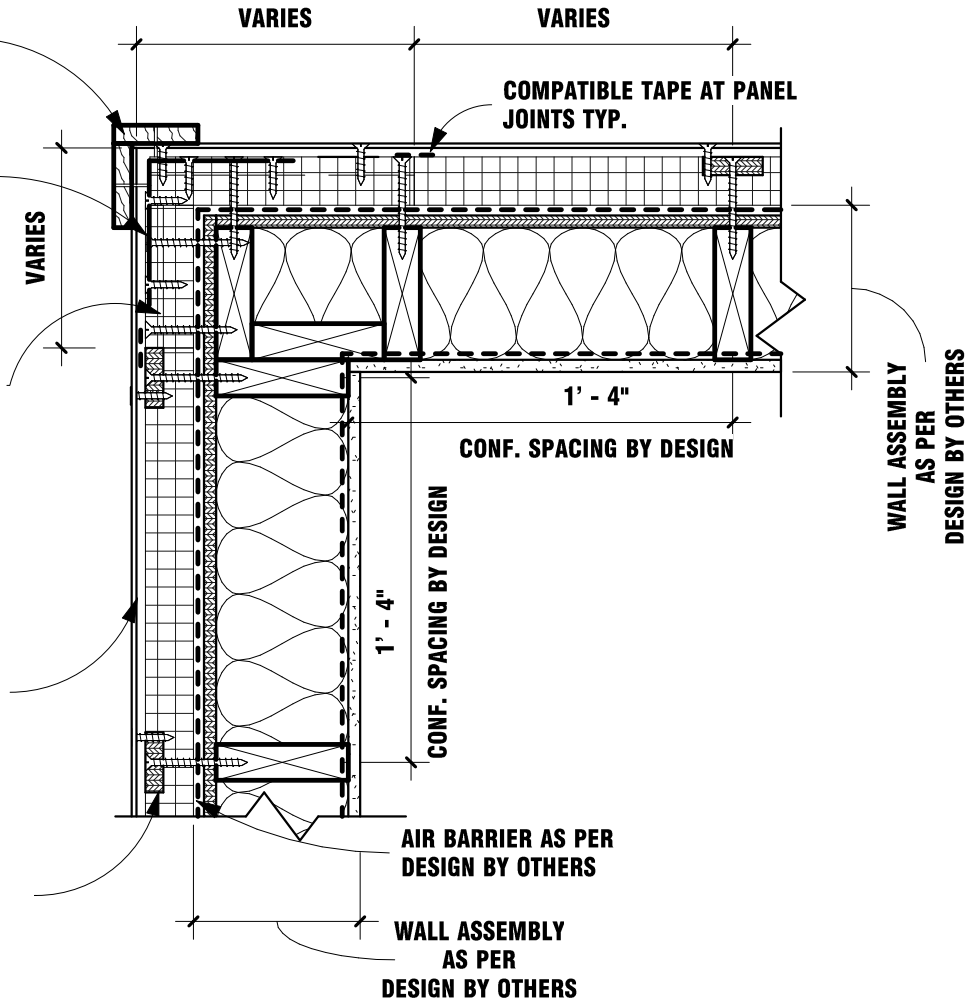
EXTERIOR VENEER TRIM AS PER DESIGN BY OTHERS

22Ga. GALVANIZED METAL BREAKSHAPE SECURED TO HORIZONTAL TGC FURRING STRIPS W/ 2 FASTENERS AT EVERY FURRING STRIP

TURN QUIK-THERM™ TGC PANELS HORIZONTAL AT OUTSIDE CORNERS. LENGTH AS REQUIRED TO EXURE TO CORNER FRAMING

EXTERIOR VENEER AS PER DESIGN BY OTHERS. SECURE TO QUIK-THERM™ INTEGRATED FURRING

QUIK-THERM™ TGC INSULATION SECURED TO WOOD STUD FRAMING. FASTENER SPACING TO SUITE APPLICATION.



QT-TGC OUTSIDE CORNER DETAIL



Quik-Therm Insulation Solutions Inc.

ENVELOPE DETAILS

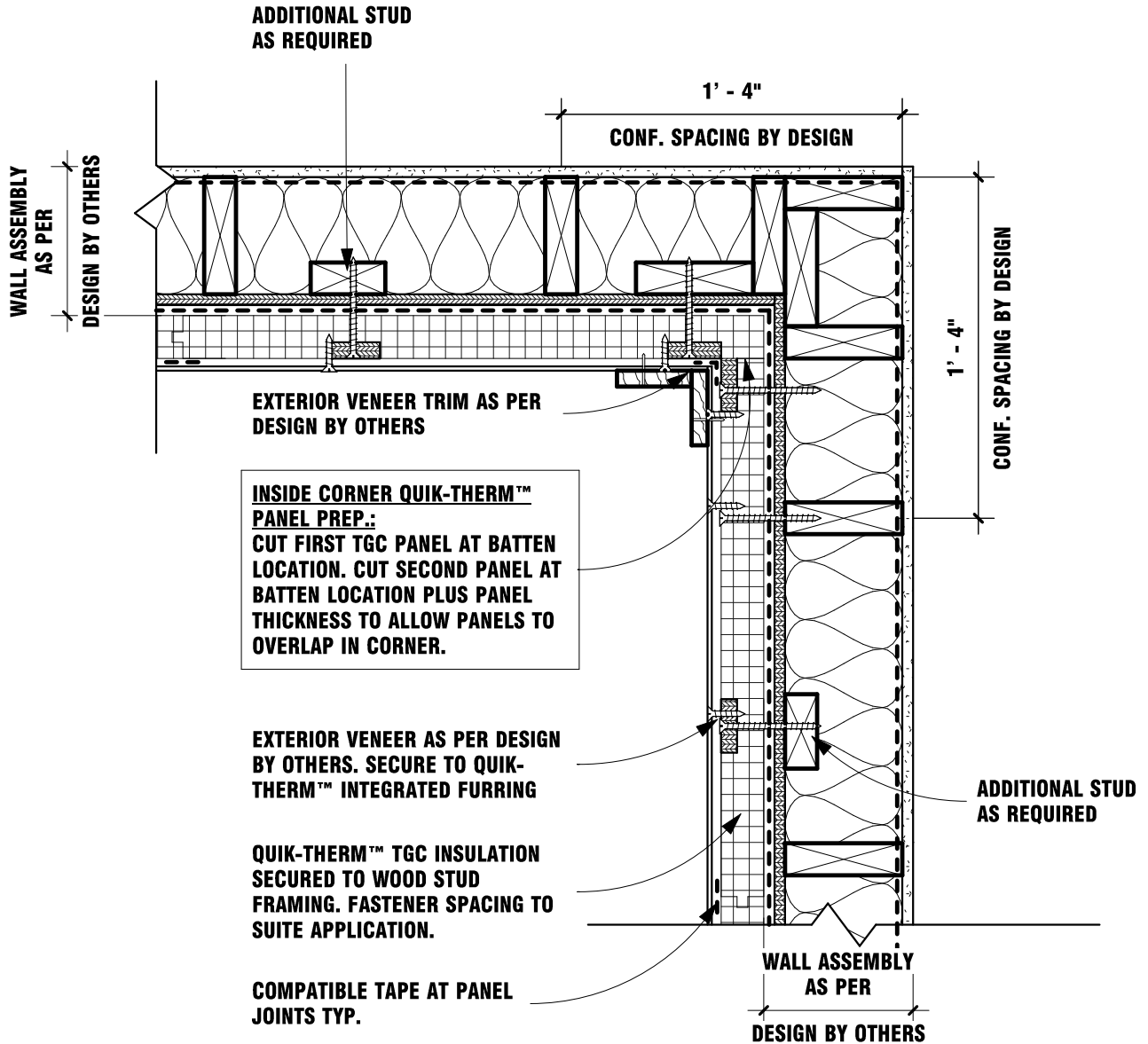
Quik-Therm T&G Connect (TGC)

quiktherm.com (888) 735-3012 (204) 736-3012

QT-TGC-2

INSIDE CORNER PLAN VIEW

1 1/2" = 1'-0"



QT-TGC INSIDE CORNER DETAIL



Quik-Therm Insulation Solutions Inc.

ENVELOPE DETAILS

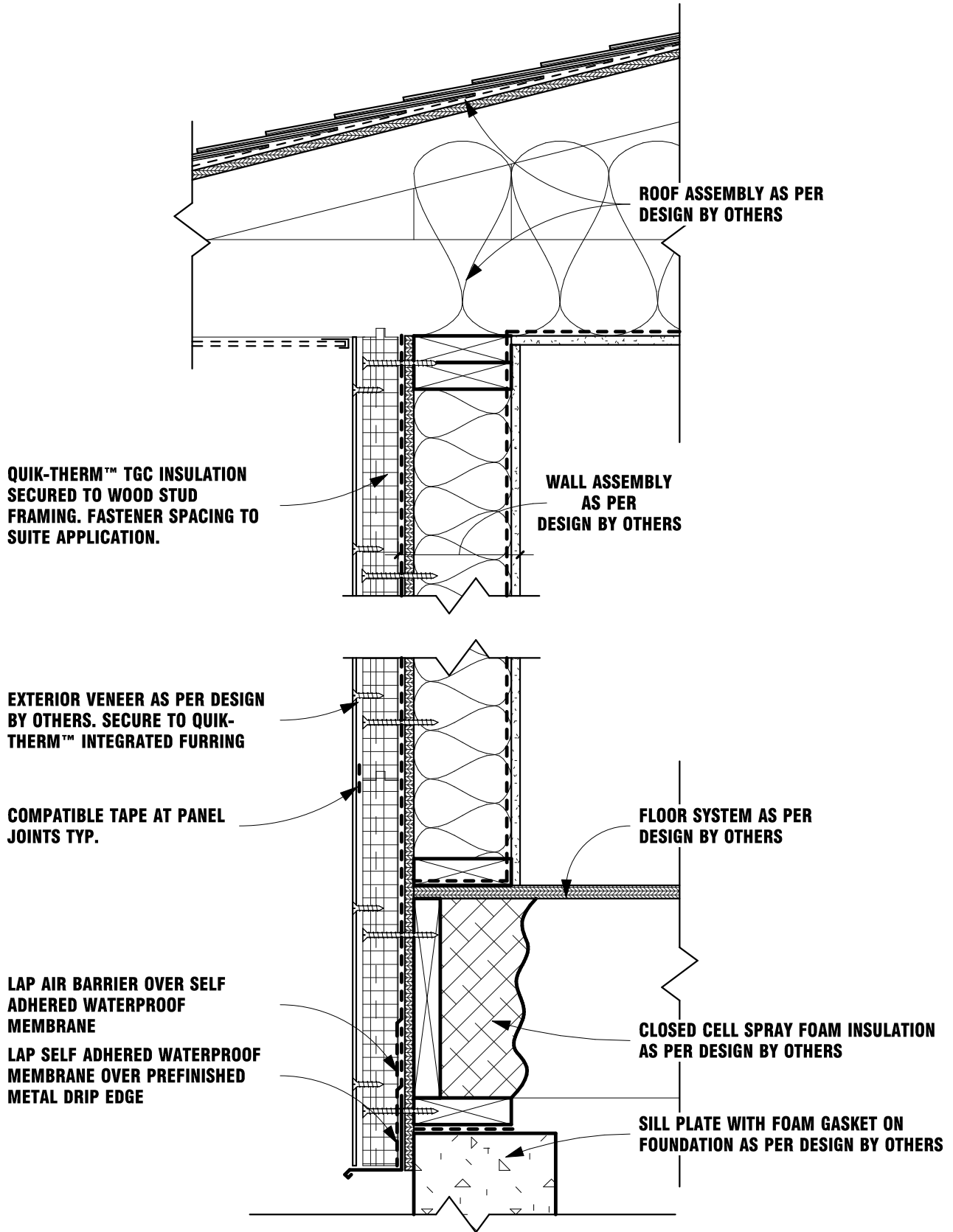
Quik-Therm T&G Connect (TGC)

quiktherm.com (888) 735-3012 (204) 736-3012

QT-TGC-3

TOP AND BOTTOM WALL SECTION VIEW

1 1/2" = 1'-0"



QT-TGC TOP & BTM OF WALL DETAIL



Quik-Therm Insulation Solutions Inc.

ENVELOPE DETAILS

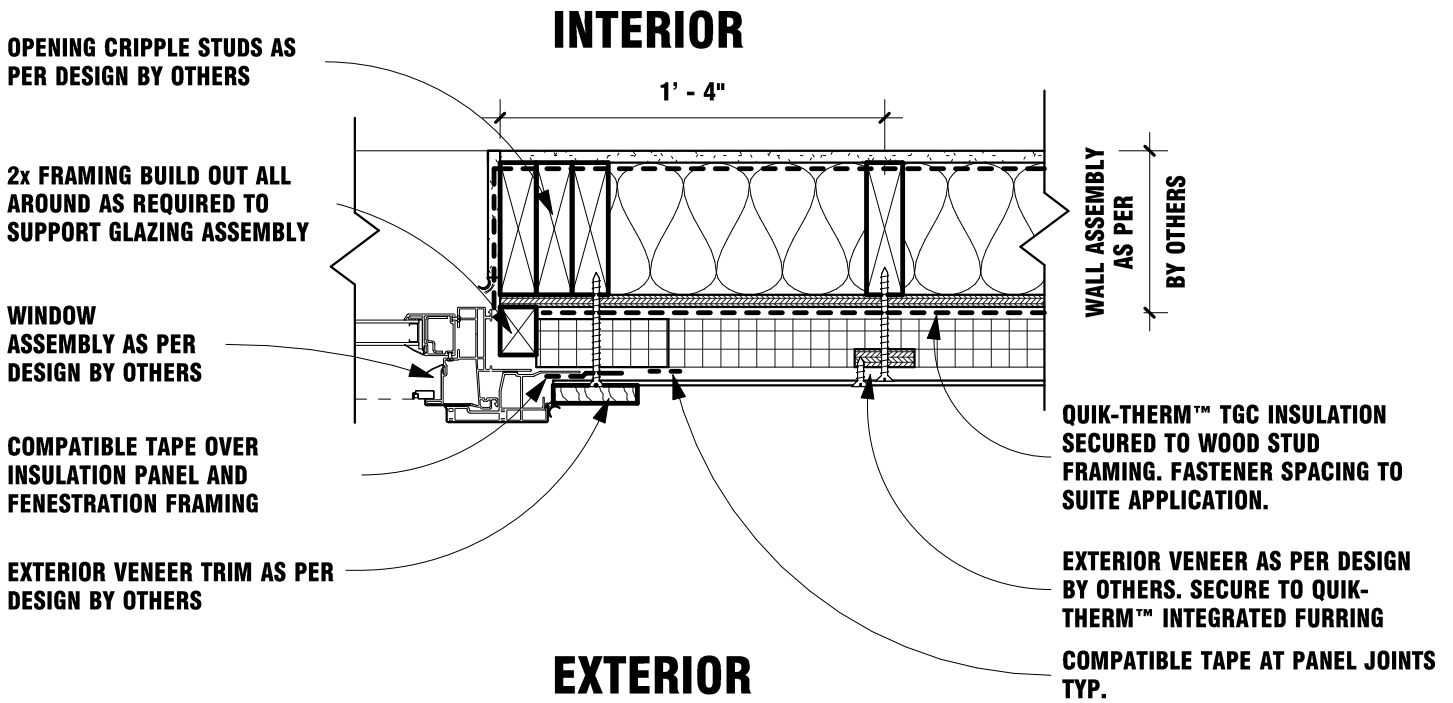
Quik-Therm T&G Connect (TGC)

quiktherm.com (888) 735-3012 (204) 736-3012

QT-TGC-4

NAIL ON FLANGE GLAZING SECTION VIEW

1 1/2" = 1'-0"



NOTE: 2x BUILDOUT, AS INDICATED, REQUIRED AT NAIL ON FLANGE WINDOWS. STORE-FRONT OR CURTAINWALL GLAZING SYSTEMS DO NOT REQUIRE 2x BUILDOUT. ALIGN THOSE WINDOWS WITH EXTERIOR FACE OF WALL ASSEMBLY SHEATHING. REFER TO DESIGN GUIDANCE BY DESIGN PROFESSIONAL

QT-TGC GLAZING JAMB DETAIL



Quik-Therm Insulation Solutions Inc.

ENVELOPE DETAILS

Quik-Therm T&G Connect (TGC)

quiktherm.com (888) 735-3012 (204) 736-3012

QT-TGC-5

NAIL ON FLANGE GLAZING PLAN VIEW

1 1/2" = 1'-0"

EXTERIOR

QUIK-THERM™ TGC INSULATION SECURED TO WOOD STUD FRAMING. FASTENER SPACING TO SUITE APPLICATION.

EXTERIOR VENEER AS PER DESIGN BY OTHERS. SECURE TO QUIK-THERM™ INTEGRATED FURRING
COMPATIBLE TAPE AT PANEL JOINTS

LAP AIR BARRIER OVER SELF ADHERED WATERPROOF MEMBRANE

EXTERIOR VENEER TRIM AS PER DESIGN BY OTHERS

RIGID INSULATION BETWEEN PREFINISHED METAL DRIP EDGE AND GLAZING VENEER FRAME AS PER GLAZING SPECIFICATION

SELF ADHERED WATER PROOF MEMBRANE OVER GLAZING FLANGE

WALL ASSEMBLY AS PER DESIGN BY OTHERS

INTERIOR

LAP SELF ADHERED WATERPROOF MEMBRANE OVER PREFINISHED METAL DRIP EDGE

OPENING HEADER AS PER DESIGN BY OTHERS

2x FRAMING BUILD OUT ALL AROUND AS REQUIRED TO SUPPORT GLAZING ASSEMBLY

WINDOW ASSEMBLY AS PER DESIGN BY OTHERS

EXTERIOR

SELF ADHERED WATER PROOF MEMBRANE AT GLAZING SILL

2x FRAMING BUILD OUT ALL AROUND AS REQUIRED TO SUPPORT GLAZING ASSEMBLY

PREFINISHED METAL DRIP EDGE OVER GLAZING SILL

EXTERIOR VENEER TRIM AS PER DESIGN BY OTHERS

COMPATIBLE TAPE AT PANEL JOINTS

EXTERIOR VENEER AS PER DESIGN BY OTHERS. SECURE TO QUIK-THERM™ INTEGRATED FURRING

QUIK-THERM™ TGC INSULATION SECURED TO WOOD STUD FRAMING. FASTENER SPACING TO SUITE APPLICATION.

WALL ASSEMBLY AS PER DESIGN BY OTHERS

INTERIOR

GLAZING BACKSTOP ANGLE DAM AS PER DESIGN BY OTHERS

NOTE: 2x BUILDOUT, AS INDICATED, REQUIRED AT NAIL ON FLANGE WINDOWS. STORE-FRONT OR CURTAINWALL GLAZING SYSTEMS DO NOT REQUIRE 2x BUILDOUT. ALIGN THOSE WINDOWS WITH EXTERIOR FACE OF WALL ASSEMBLY SHEATHING. REFER TO DESIGN GUIDANCE BY DESIGN PROFESSIONAL

QT-TGC GLAZING HEAD AND SILL DETAIL



Quik-Therm Insulation Solutions Inc.

ENVELOPE DETAILS

Quik-Therm T&G Connect (TGC)

quiktherm.com (888) 735-3012 (204) 736-3012

QT-TGC-6

DOOR HEAD/JAMB DETAIL PLAN & SECTION VIEW

1 1/2" = 1'-0"

EXTERIOR

QUIK-THERM™ TGC INSULATION SECURED TO WOOD STUD FRAMING. FASTENER SPACING TO SUITE APPLICATION.

EXTERIOR VENEER AS PER DESIGN BY OTHERS. SECURE TO QUIK-THERM™ INTEGRATED FURRING

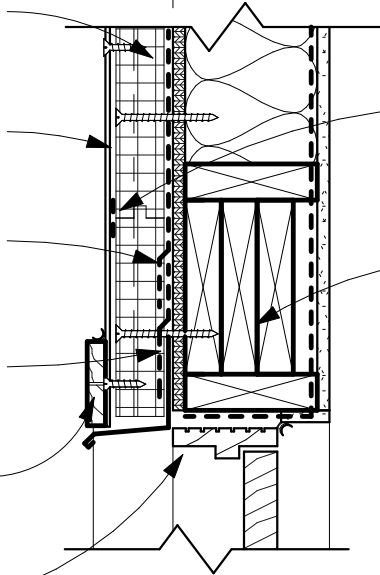
LAP AIR BARRIER OVER SELF ADHERED WATERPROOF MEMBRANE

LAP SELF ADHERED WATERPROOF MEMBRANE OVER PREFINISHED METAL DRIP EDGE

EXTERIOR VENEER TRIM AS PER DESIGN BY OTHERS

DOOR FRAME AS PER DESIGN BY OTHERS

WALL ASSEMBLY AS PER DESIGN BY OTHERS



COMPATIBLE TAPE AT PANEL JOINTS

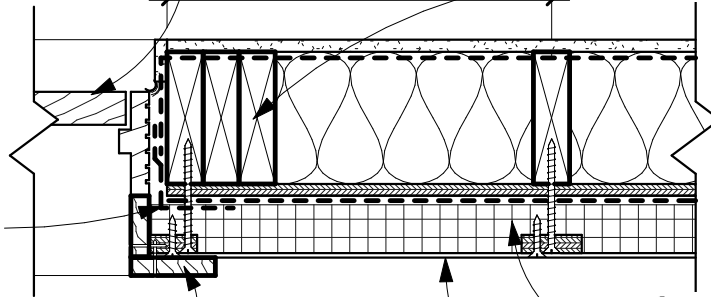
OPENING HEADER AS PER DESIGN BY OTHERS

INTERIOR

SECTION VIEW

INTERIOR

OPENING CRIPPLE STUDS AS PER DESIGN BY OTHERS



WALL ASSEMBLY AS PER DESIGN BY OTHERS

SELF ADHERED WATERPROOF MEMBRANE AROUND OPENING

EXTERIOR VENEER TRIM AS PER DESIGN BY OTHERS

PLAN VIEW

QUIK-THERM™ TGC INSULATION SECURED TO WOOD STUD FRAMING. FASTENER SPACING TO SUITE APPLICATION.

EXTERIOR VENEER AS PER DESIGN BY OTHERS. SECURE TO QUIK-THERM™ INTEGRATED FURRING

EXTERIOR

QT-TGC DOOR HEAD & JAMB DETAIL



Quik-Therm Insulation Solutions Inc.

ENVELOPE DETAILS

Quik-Therm T&G Connect (TGC)

quiktherm.com (888) 735-3012 (204) 736-3012

QT-TGC-7

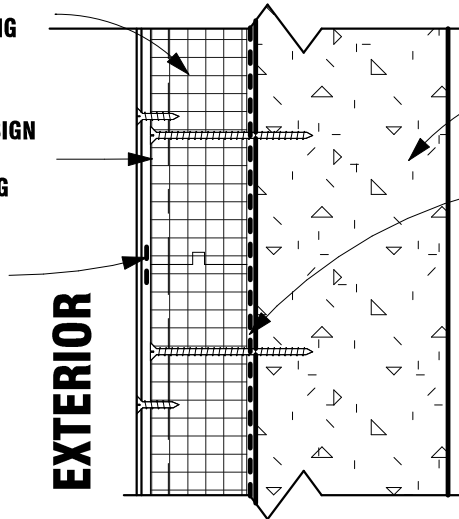
CONCRETE ATTACHMENTS SECTION VIEW

1 1/2" = 1'-0"

QUIK-THERM™ TGC INSULATION SECURED TO CONCRETE SUBSTRATE. FASTENER SPACING TO SUITE APPLICATION.

EXTERIOR VENEER AS PER DESIGN BY OTHERS. SECURE TO QUIK-THERM™ INTEGRATED FURRING

COMPATIBLE TAPE AT JOINTS



EXTERIOR

INTERIOR

CONCRETE SUBSTRATE AS PER DESIGN BY OTHERS

SELF ADHERED WATERPROOF MEMBRANE TO SUBSTRATE

EXTERIOR APPLICATION

QUIK-THERM™ TGC INSULATION SECURED TO CONCRETE SUBSTRATE. FASTENER SPACING TO SUITE APPLICATION.

INTERIOR GYPSUM SHEATHING AS PER DESIGN BY OTHERS. SECURE TO QUIK-THERM™ INTEGRATED FURRING

CONCRETE SUBSTRATE AS PER DESIGN BY OTHERS

SELF ADHERED WATERPROOF TO SUBSTRATE

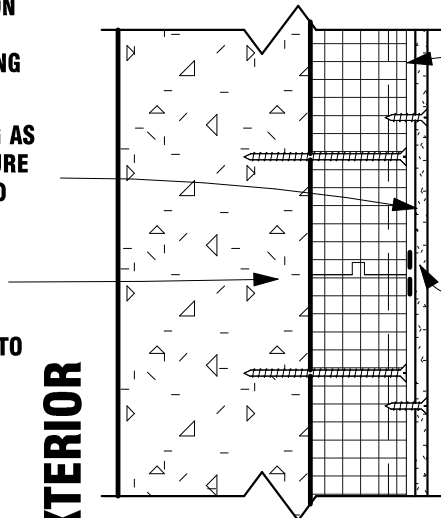
EXTERIOR

INTERIOR

INTERIOR APPLICATION OPTION #1

QUIK-THERM™ TGC INSULATION SECURED TO CONCRETE SUBSTRATE. FASTENER SPACING TO SUITE APPLICATION.

COMPATIBLE TAPE AT JOINTS



EXTERIOR

INTERIOR

INTERIOR APPLICATION OPTION #2

QT-TGC CONCRETE (INT & EXT)



Quik-Therm Insulation Solutions Inc.

ENVELOPE DETAILS

Quik-Therm T&G Connect (TGC)

quiktherm.com (888) 735-3012 (204) 736-3012

QT-TGC-8

NOTES 1

1 1/2" = 1'-0"

Handling & Storage Considerations Notes

1. Store product in a covered area, away from the elements and direct sunlight.
2. Protect product from damage. Although Quik-Therm TGC is rugged and durable, corners and edges are especially susceptible to damage during transport, storage and installation.
3. Although product is lightweight, it is typically shipped in bundles 1' thick consisting of several individual sheets.
4. Bundles may be awkward to handle due to their physical size. Use proper caution to avoid personal injury and/or physical damage to product.
5. Product has an EPS foam core. Keep away from extreme heat.
6. Avoid walking on uninstalled product.

Personal Protective Equipment Notes

Follow standard workplace safety protocols including (but not limited to) the use of eye and hearing protection, gloves, and dust masks as required.

Cutting Notes

1. The product can be cut using a variety of methods typical for standard foam board insulation, including (but not limited to):
 - Utility Knife
 - Hand Saw
 - Circular Saw
 - Table Saw
 - Hot Knife

Suggested Tools and Materials Notes

Hammer, Screw Gun and/or Nail Gun, Utility Knife & Blades, Hand Saw, Circular Saw, Spray Foam and adhesive (PL-300) or compatible adhesive with Polystyrene foam, Coated Deck Screws (Appropriate length), Hammer Drill (Concrete Only), 4' Level, Caulking Gun, Measuring Tape. Optional: Table Saw.

Basic Panel Installation Notes

1. 6 mil poly, OSB and House Wrap are not required for the Quik-Therm™ TGC assembly. See Hygrothermal Analysis in product line documentation.
2. First stud at corner spaced to fasten panel furring strips at corners for attaching corner molding.
3. Remainder of framing must maintain 16" O.C. TIP: Use 14.5" long temporary blocking to help straighten crooked studs.
4. Ensure studs above windows/doors and below windows follow 16" O.C. spacing to accommodate panel installation.
5. White 3/16" poly foam gasket over double top plate and sill plate area.
6. Ensure all nailing strips are connected to a framing member as per fastening schedule and penetrate into studs minimum 0.75" (Engineered by Morrison Hershfield).
7. Spray foam and/or tape panel connections together. Spray foam is considered best practice. Fill all voids with spray foam.
8. Butt end panels together minimum 8" up from bottom plate. Connections can be staggered or in-line. Butt end nailing strips must be connected to a framing member.
9. To compress panels tight to framing, stand on nailing strips over studs when fastening.
10. It is recommended to use building paper between cementitious stucco and the Quik-Therm™ TGC panel film.
11. Cut corner panels so that plywood furring strips are fastened to corner framing members as per fastening schedules and penetrate into studs minimum 0.75" (Engineered by Morrison Hershfield).
12. Foam corner panels together using canned spray foam. Fill voids with spray foam.
13. Ensure corner furring strips are positioned to accommodate secure fastening of corner moldings. Cut panels to achieve overlap at corners.
14. Typical construction shown. Please refer to design drawings specific to your application. Confirm/consult with a design professional.
15. The information presented herein is based upon data considered accurate. Quik-Therm Insulation Solutions Inc. does not assume any responsibility for any misrepresentation or assumptions the reader may formulate. Check with local building codes prior to installing Quik-Therm™ TGC Connect.

Exterior Perforations Notes (Electrical Boxes / hose bibs etc)

Seal all exterior wall electrical boxes and other breaches using conventional code compliant techniques. Apply tapes and sealants to the Quik-Therm™ TGC Connect polymer film in the same manner as 6 mil polyethylene. Optional: Pressure sealed hard plastic electrical boxes with foam gaskets.



Quik-Therm Insulation Solutions Inc.

ENVELOPE DETAILS

Quik-Therm T&G Connect (TGC)

quiktherm.com (888) 735-3012 (204) 736-3012

QT-TGC-9

NOTES 2

1 1/2" = 1'-0"

Horizontal Installation Notes

1. Typical construction shown. Please refer to design drawings specific to your application. Confirm/consult with design professional prior to installing Quik-Therm products.
2. Two framing nails (minimum 3.25" long) fasten furring strips to studs, corners, top plates, bottom plate and rim joists.
3. Top horizontal furring strip to be fastened maximum 1" from top of top plate.
4. Butt ends to connect over studs (just like OSB sheathing). ** For locations where butt ends don't align center over a stud, an extra stud must be incorporated. Studs can be installed conventional or flat orientation.
5. Cladding weight. Maximum 5 lb. per sq ft. ** For over 5 lb. cladding and cementitious stucco - install Quick-Therm™ TGC Connect in a vertical orientation - or as specified by a Design Professional.
6. Install cladding per manufacturers recommendations/specifications. It is recommended to use building paper between cementitious stucco and the Quick-Therm™ TGC panel film. Masonry cladding: Consult with a Design Professional.
7. The information presented herein is based upon data considered accurate. Quik-Therm Insulation Solutions Inc. does not assume any responsibility for any misrepresentation or assumptions the reader may formulate. Please check local building codes prior to installing Quik-Therm products.

Fastening Notes

1. Framing nail heads to be flush with furring strip top surface. Do not drive nail heads into furring.
2. Framing nails through 2½" thick Quick-Therm™ TGC Connect to framing must achieve minimum 0.75" embedment into framing (Engineered by Morrison Hershfield).
3. For typical vertical application/orientation's. Space nails 8" apart along furring strips.
4. Horizontal applications (furring perpendicular to studs). 2 nails per furring strip into each framing member - @16" O.C.
5. Use multiple fasteners at plates and rim joists (see Installation Renders).
6. Commonly used Quick-Therm™ TGC cladding materials. Cementitious Stucco (vertical orientation only), Cement Board, Metal, Wood, Composite, etc.
7. Consult with a Design Professional

Canned Spray Foam Notes

1. Foam together tongue and groove and butt foam to foam connections. Spray foam must be compatible with expanded polystyrene (EPS) rigid foam.
2. Use spray foam to fill cracks and gaps between rigid foam and rigid foam and wood and around windows, doors, etc.
3. DO NOT use spray foam to create an air barrier connection to polymer facers. It DOESN'T create a structural bond.
4. DO NOT use spray foam in lieu of the poly foam gaskets or air barrier sealants.
5. For additional spray foam applications consult with a Design Professional.

Air Barrier Sealants Notes

1. Air Barrier sealants must be compatible with the Quick-Therm™ TGC polymer facers and rigid EPS foam. Recommendations: LePage Quad Max or Henry Air Bloc, or specified by a Design Professional.
2. Liquid applied air barrier sealants can be used to seal window and door nailing fins, etc. to Quick-Therm™ TGC polymer facers. See Installation Guidelines. Refer to Sealant Manufacturer's recommendations.
3. Air barrier sealants are not recommended for foam to foam and wide/large gap connections. Use spray foam to fill large gaps.

Construction Tape Notes

1. Tape all Quick-Therm™ TGC polymer faced tongue and groove and butt joint connections. Recommended Tape: 50500 Cantech Flashing Tape, or other tape specified by a Design Professional.
2. Tape Quick-Therm™ TGC polymer faced panels to wood, PVC, Fiberglass and metal window and door nailing fins.
3. Use minimum 4" wide tape for T&G connections, and vertical sides and bottom of windows and doors.
4. Use minimum 6" wide flashing tape for butt foam connections and along top of windows and doors.

Buildings from 4 to 6 Storeys Notes

1. Connect installed with furring strips in vertical orientation only.
 - Refer to CAN/ULC S-101 Fire Test at quiktherm.com
 - Screws must penetrate the wall studding as per FSC guidelines.
 - All vertical and horizontal joints should be foamed and taped.
 - Install cladding as per design requirements.