



Quik-Therm Insulation Solutions Inc.

ENVELOPE DETAILS

Quik-Therm Solar Dry (SDI)

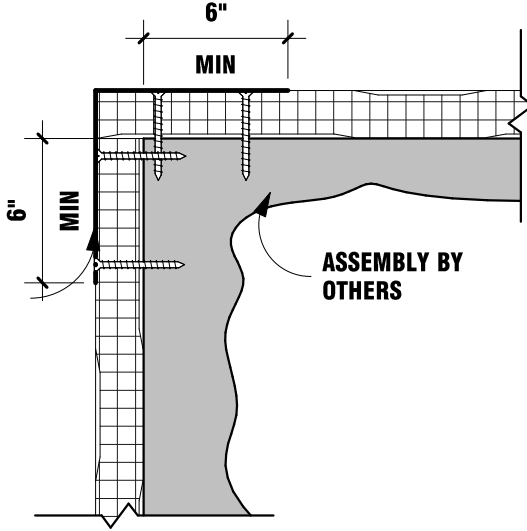
quiktherm.com (888) 735-3012 (204) 736-3012

QT-SDI-1

OUTSIDE CORNER PLAN VIEW

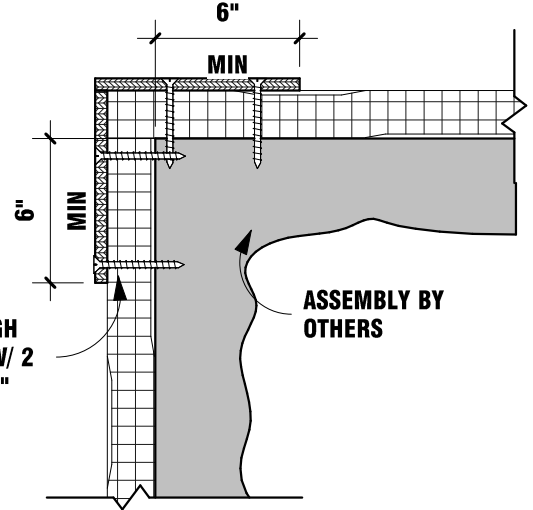
1 1/2" = 1'-0"

22Ga. GALVANIZED METAL BREAKSHAPE SECURED THROUGH SDI INSULATION W/ 2 FASTENERS AT 16" CENTERS



OPTION #1

1/2" PLYWOOD SECURED THROUGH SDI INSULATION W/ 2 FASTENERS AT 16" CENTERS



OPTION #2

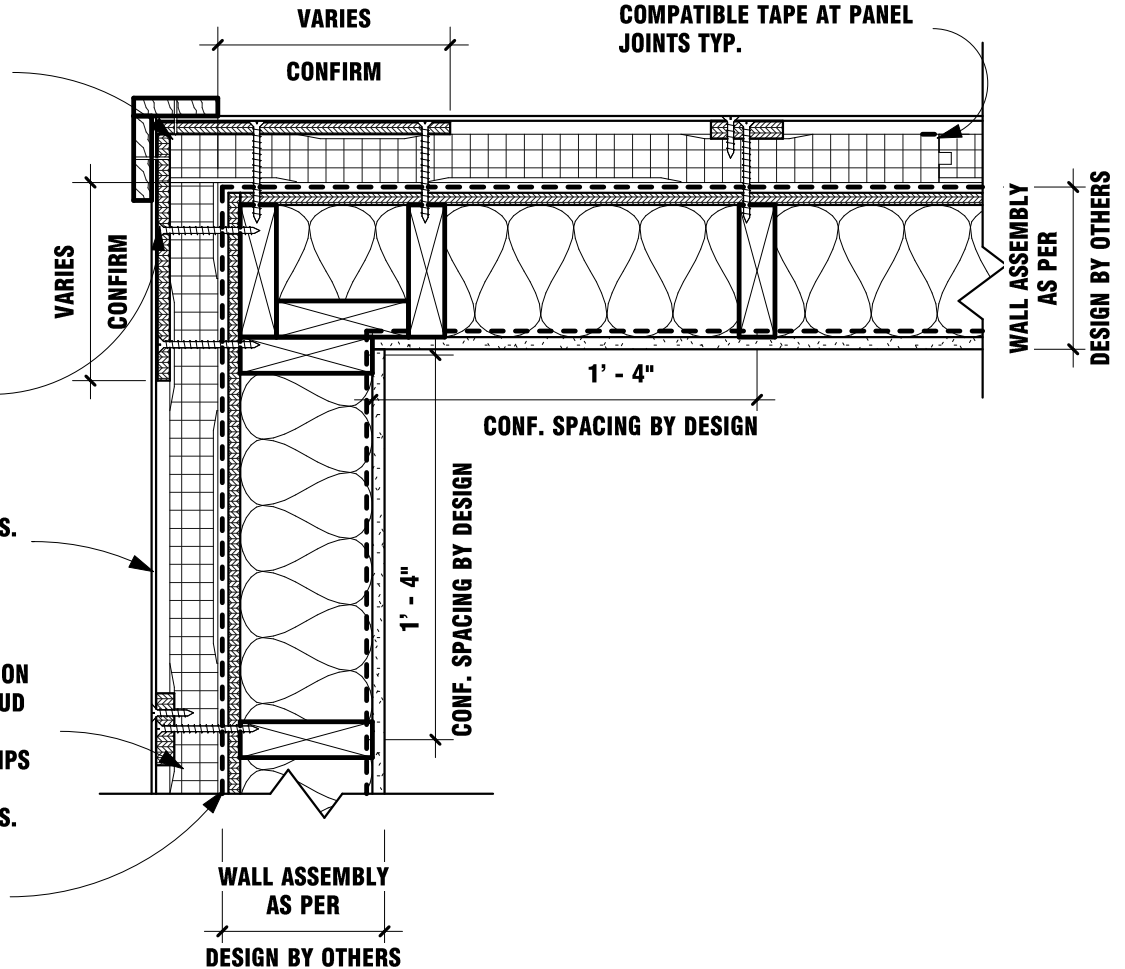
SEE ABOVE OUTSIDE CORNER OPTIONS

EXTERIOR VENEER TRIM AS PER DESIGN BY OTHERS

EXTERIOR VENEER AS PER DESIGN BY OTHERS. SECURE THROUGH FURRING STRIPS.

PERFORATED QUIK-THERM™ SDI INSULATION SECURED TO WOOD STUD FRAMING WITH SITE APPLIED FURRING STRIPS IN FACTORY FORMED RAINSCREEN CHANNELS.

AIR BARRIER AS PER DESIGN BY OTHERS



QT-SDI OUTSIDE CORNER DETAIL



Quik-Therm Insulation Solutions Inc.

ENVELOPE DETAILS

Quik-Therm Solar Dry (SDI)

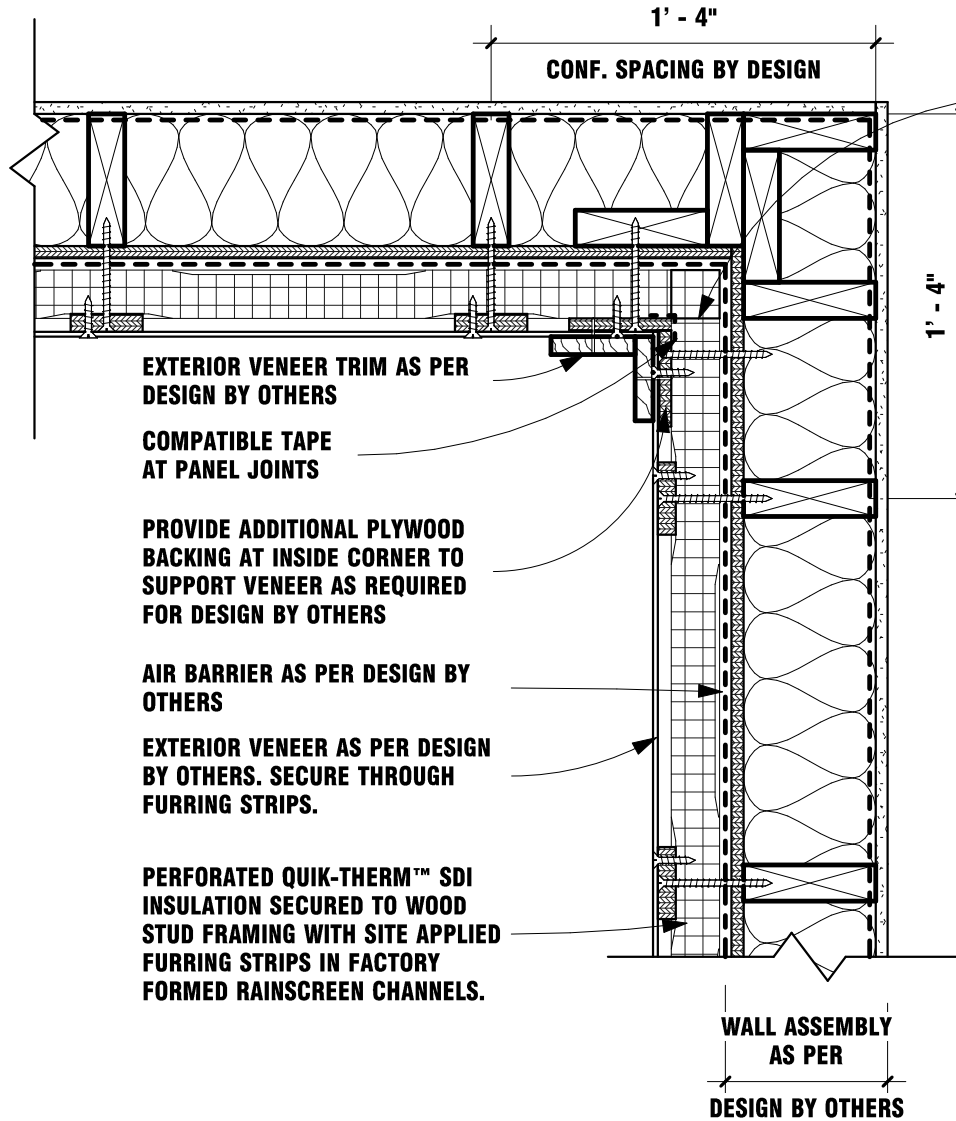
quiktherm.com (888) 735-3012 (204) 736-3012

QT-SDI-2

INSIDE CORNER PLAN VIEW

1 1/2" = 1'-0"

WALL ASSEMBLY
AS PER
DESIGN BY OTHERS



INSIDE CORNER QUIK-THERM™ PANEL PREP.:
ALIGN START OF SDI PANEL CHANNEL WITH WALL FRAMING. PROVIDE INFILL INSULATION AS REQUIRED TO FILL ANY GAPS.

QT-SDI INSIDE CORNER DETAIL



Quik-Therm Insulation Solutions Inc.

ENVELOPE DETAILS

Quik-Therm Solar Dry (SDI)

quiktherm.com (888) 735-3012 (204) 736-3012

QT-SDI-3

TOP AND BOTTOM WALL SECTION VIEW

1 1/2" = 1'-0"

ARREST THERMAL CONVECTION. APPLY A HORIZONTAL BEAD OF SPRAY FOAM OR COMPATIBLE SEALANT (MINIMUM 1/2" THICK) TO TOP OF QUIK-THERM™ SDI PANELS (TOP OF WALLS & UNDERSIDE OF GLAZING SILLS).

ROOF ASSEMBLY AS PER DESIGN BY OTHERS

WALL ASSEMBLY AS PER DESIGN BY OTHERS

PERFORATED QUIK-THERM™ SDI INSULATION SECURED TO WOOD STUD FRAMING WITH SITE APPLIED FURRING STRIPS IN FACTORY FORMED RAINSCREEN CHANNELS.

EXTERIOR VENEER AS PER DESIGN BY OTHERS. SECURE THROUGH FURRING STRIPS.

COMPATIBLE TAPE AT PANEL JOINTS TYP.

FLOOR SYSTEM AS PER DESIGN BY OTHERS

AIR BARRIER AS PER DESIGN BY OTHERS

LAP AIR BARRIER OVER SELF ADHERED WATERPROOF MEMBRANE

CLOSED CELL SPRAY FOAM INSULATION AS PER DESIGN BY OTHERS

LAP SELF ADHERED WATERPROOF MEMBRANE OVER PREFINISHED METAL DRIP EDGE

WRAP INSECT SCREEN AROUND BOTTOM OF QUIK-THERM™ SDI INSULATION AND FURRING STRIPS

SILL PLATE WITH FOAM GASKET ON FOUNDATION AS PER DESIGN BY OTHERS

QT-SDI TOP & BTM OF WALL DETAIL



Quik-Therm Insulation Solutions Inc.

ENVELOPE DETAILS

Quik-Therm Solar Dry (SDI)

quiktherm.com (888) 735-3012 (204) 736-3012

QT-SDI-4

NAIL ON FLANGE GLAZING SECTION VIEW

1 1/2" = 1'-0"

EXTERIOR

EXTERIOR

PERFORATED QUIK-THERM™ SDI INSULATION SECURED TO WOOD STUD FRAMING WITH SITE APPLIED FURRING STRIPS IN FACTORY FORMED RAINSCREEN CHANNELS

EXTERIOR VENEER AS PER DESIGN BY OTHERS. SECURE THROUGH FURRING STRIPS.

COMPATIBLE TAPE AT PANEL JOINTS

LAP AIR BARRIER OVER SELF ADHERED WATERPROOF MEMBRANE

EXTERIOR VENEER TRIM AS PER DESIGN BY OTHERS

WRAP INSECT SCREEN AROUND BOTTOM OF QUIK-THERM™ SDI INSULATION AND FURRING STRIPS

RIGID INSULATION BETWEEN PREFINISHED METAL DRIP EDGE AND GLAZING VENEER FRAME AS PER GLAZING SPECIFICATION BY OTHERS

SELF ADHERED WATER PROOF MEMBRANE OVER GLAZING FLANGE

SELF ADHERED WATER PROOF MEMBRANE AT GLAZING SILL

2x FRAMING BUILD OUT ALL AROUND AS REQUIRED TO SUPPORT GLAZING ASSEMBLY

PREFINISHED METAL DRIP EDGE OVER GLAZING SILL

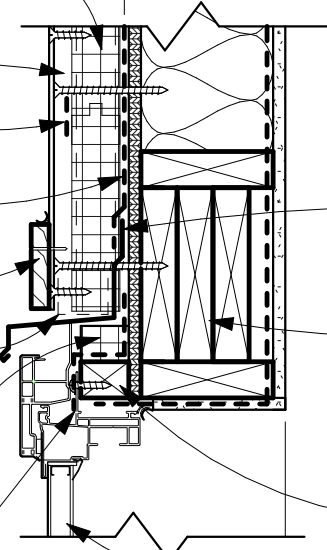
EXTERIOR VENEER TRIM AS PER DESIGN BY OTHERS

ARREST THERMAL CONVECTION. APPLY A HORIZONTAL BEAD OF SPRAY FOAM OR COMPATIBLE SEALANT (MINIMUM 1/2" THICK) TO TOP OF QUIK-THERM™ SDI PANELS (TOP OF WALLS & UNDERSIDE OF GLAZING SILLS).

EXTERIOR VENEER AS PER DESIGN BY OTHERS. SECURE THROUGH FURRING STRIPS.

PERFORATED QUIK-THERM™ SDI INSULATION SECURED TO WOOD STUD FRAMING WITH SITE APPLIED FURRING STRIPS IN FACTORY FORMED RAINSCREEN CHANNELS

WALL ASSEMBLY AS PER DESIGN BY OTHERS



INTERIOR

LAP SELF ADHERED WATERPROOF MEMBRANE OVER PREFINISHED METAL DRIP EDGE

OPENING HEADER AS PER DESIGN BY OTHERS

2x FRAMING BUILD OUT ALL AROUND AS REQUIRED TO SUPPORT GLAZING ASSEMBLY

WINDOW ASSEMBLY AS PER DESIGN BY OTHERS

GLAZING BACKSTOP ANGLE DAM AS PER DESIGN BY OTHERS

INTERIOR

COMPATIBLE TAPE AT PANEL JOINTS

WALL ASSEMBLY AS PER DESIGN BY OTHERS

NOTE: 2x BUILDOUT, AS INDICATED, REQUIRED AT NAIL ON FLANGE WINDOWS. STORE-FRONT OR CURTAINWALL GLAZING SYSTEMS DO NOT REQUIRE 2x BUILDOUT. ALIGN THOSE WINDOWS WITH EXTERIOR FACE OF WALL ASSEMBLY SHEATHING. REFER TO DESIGN GUIDANCE BY DESIGN PROFESSIONAL

QT-SDI GLAZING HEAD AND SILL DETAIL



Quik-Therm Insulation Solutions Inc.

ENVELOPE DETAILS

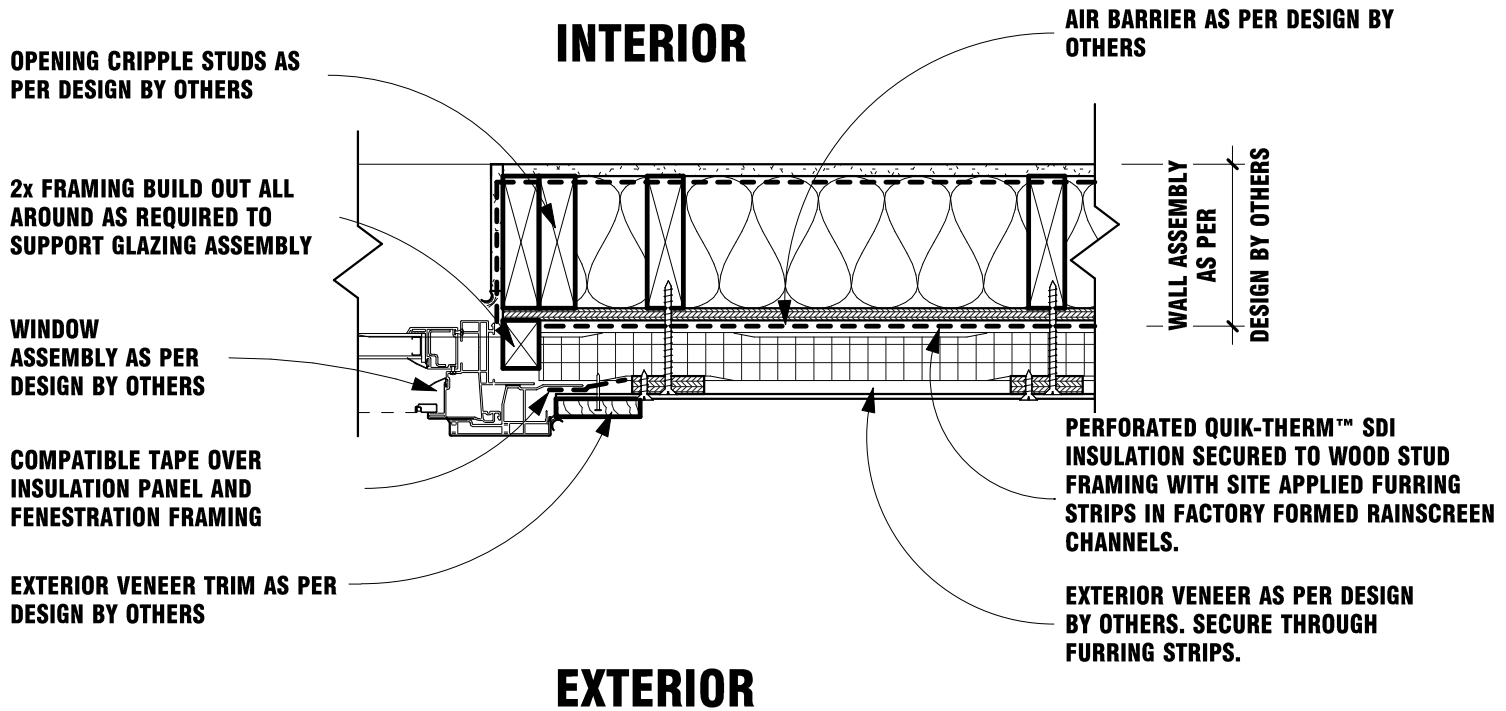
Quik-Therm Solar Dry (SDI)

quiktherm.com (888) 735-3012 (204) 736-3012

QT-SDI-5

NAIL ON FLANGE GLAZING PLAN VIEW

1 1/2" = 1'-0"



NOTE: 2x BUILDOUT, AS INDICATED, REQUIRED AT NAIL ON FLANGE WINDOWS. STORE-FRONT OR CURTAINWALL GLAZING SYSTEMS DO NOT REQUIRE 2x BUILDOUT. ALIGN THOSE WINDOWS WITH EXTERIOR FACE OF WALL ASSEMBLY SHEATHING. REFER TO DESIGN GUIDANCE BY DESIGN PROFESSIONAL

QT-SDI GLAZING JAMB DETAIL



Quik-Therm Insulation Solutions Inc.

ENVELOPE DETAILS

Quik-Therm Solar Dry (SDI)

quiktherm.com (888) 735-3012 (204) 736-3012

QT-SDI-6

DOOR HEAD/JAMB DETAIL PLAN & SECTION VIEW

1 1/2" = 1'-0"

EXTERIOR

PERFORATED QUIK-THERM™ SDI INSULATION SECURED TO WOOD STUD FRAMING WITH SITE APPLIED FURRING STRIPS IN FACTORY FORMED RAINSREEN CHANNELS

EXTERIOR VENEER AS PER DESIGN BY OTHERS. SECURE THROUGH FURRING STRIPS.

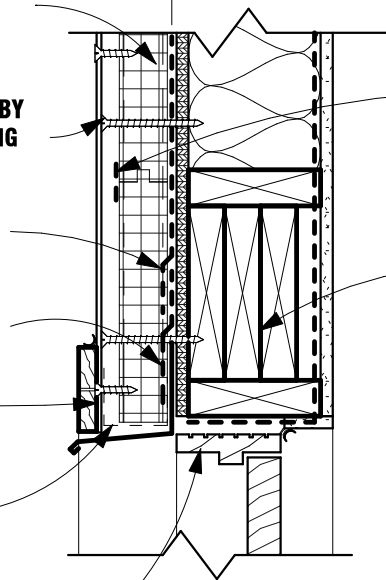
LAP AIR BARRIER OVER SELF ADHERED WATERPROOF MEMBRANE

LAP SELF ADHERED WATERPROOF MEMBRANE OVER PREFINISHED METAL DRIP EDGE

EXTERIOR VENEER TRIM AS PER DESIGN BY OTHERS

WRAP INSECT SCREEN AROUND BOTTOM OF QUIK-THERM™ SDI INSULATION AND FURRING STRIPS

WALL ASSEMBLY
AS PER
DESIGN BY OTHERS



COMPATIBLE TAPE AT PANEL JOINTS TYP.

OPENING HEADER AS PER DESIGN BY OTHERS

INTERIOR

SECTION VIEW

DOOR FRAME AS PER DESIGN BY OTHERS

INTERIOR
1' - 4"

OPENING CRIPPLE STUDS AS PER DESIGN BY OTHERS

WALL ASSEMBLY
AS PER
DESIGN BY OTHERS

SELF ADHERED WATERPROOF MEMBRANE AROUND OPENING & LAP ONTO EXTERIOR FACE OF AIR BARRIER.

EXTERIOR VENEER TRIM AS PER DESIGN BY OTHERS

PERFORATED QUIK-THERM™ SDI INSULATION SECURED TO WOOD STUD FRAMING WITH SITE APPLIED FURRING STRIPS IN FACTORY FORMED RAINSREEN CHANNELS. VENEER AS PER DESIGN BY OTHERS. SECURE THROUGH FURRING STRIPS.

PLAN VIEW

EXTERIOR

QT-SDI DOOR HEAD & JAMB DETAIL



Quik-Therm Insulation Solutions Inc.

ENVELOPE DETAILS

Quik-Therm Solar Dry (SDI)

quiktherm.com (888) 735-3012 (204) 736-3012

QT-SDI-7

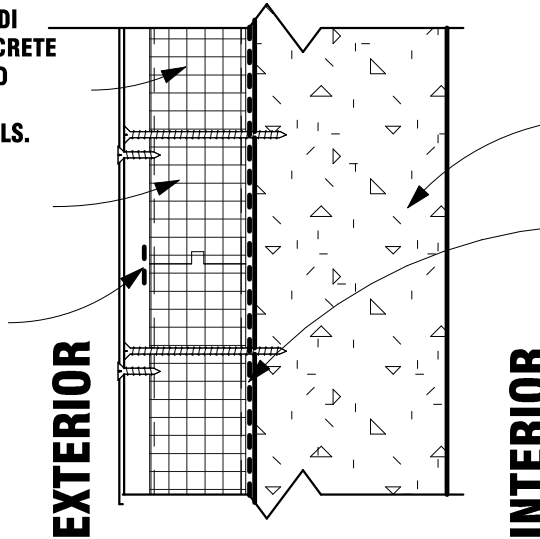
CONCRETE ATTACHMENTS SECTION VIEW

1 1/2" = 1'-0"

PERFORATED QUIK-THERM™ SDI INSULATION SECURED TO CONCRETE SUBSTRATE WITH SITE APPLIED FURRING STRIPS IN FACTORY FORMED RAINSCREEN CHANNELS.

EXTERIOR VENEER AS PER DESIGN BY OTHERS. SECURE THROUGH FURRING STRIPS.

COMPATIBLE TAPE AT JOINTS

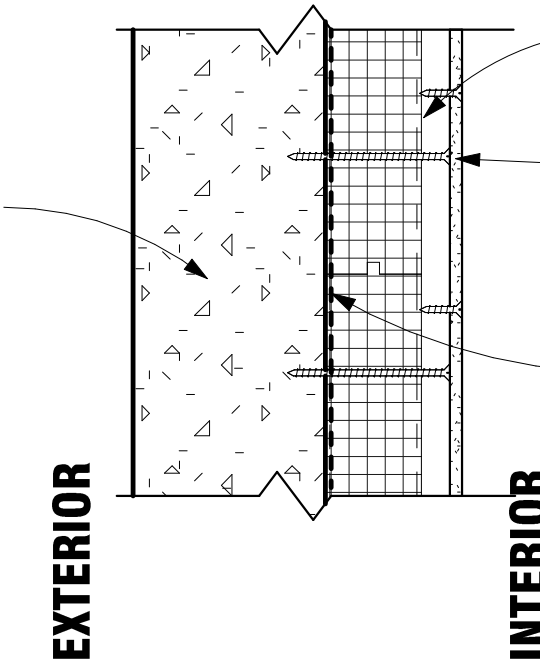


CONCRETE SUBSTRATE AS PER DESIGN BY OTHERS

SELF ADHERED WATERPROOF MEMBRANE TO SUBSTRATE

EXTERIOR APPLICATION

CONCRETE SUBSTRATE AS PER DESIGN BY OTHERS



PERFORATED QUIK-THERM™ SDI INSULATION SECURED TO CONCRETE SUBSTRATE WITH SITE APPLIED FURRING STRIPS IN FACTORY FORMED RAINSCREEN CHANNELS.

INTERIOR GYPSUM SHEATHING AS PER DESIGN BY OTHERS. SECURE THROUGH FURRING STRIPS.

SELF ADHERED WATERPROOF MEMBRANE

INTERIOR APPLICATION

QT-SDI CONCRETE (INT & EXT)



Quik-Therm Insulation Solutions Inc.

ENVELOPE DETAILS

Quik-Therm Solar Dry (SDI)

quiktherm.com (888) 735-3012 (204) 736-3012

QT-SDI-8

NOTES 1

1 1/2" = 1'-0"

Handling & Storage Considerations Notes

1. Store product in a covered area, away from the elements and direct sunlight.
2. Protect product from damage. Although Quik-Therm SDI is rugged and durable, corners and edges are especially susceptible to damage during transport, storage and installation.
3. Although product is lightweight, it is typically shipped in bundles 1' thick consisting of several individual sheets.
4. Bundles may be awkward to handle due to their physical size. Use proper caution to avoid personal injury and/or physical damage to product.
5. Product has an EPS foam core. Keep away from extreme heat.
6. Avoid walking on uninstalled product.

Personal Protective Equipment Notes

1. Follow standard workplace safety protocols including (but not limited to) the use of eye and hearing protection, gloves, and dust masks as required.

Cutting Notes

1. The product can be cut using a variety of methods typical for standard foam board insulation, including (but not limited to):

- Utility Knife
- Hand Saw
- Circular Saw
- Table Saw
- Hot Knife

Suggested Tools and Materials Notes

1. Hammer, Screw Gun and/or Nail Gun, Utility Knife & Blades, Hand Saw, Circular Saw, Spray Foam and adhesive (PL-300) or compatible adhesive with Polystyrene foam, Coated Deck Screws (Appropriate length), Hammer Drill (Concrete Only), 4' Level, Caulking Gun, Measuring Tape. Optional: Table Saw.

General Notes

1. Install building wrap and window / door air barrier detailing before installing Quik-Therm Air Dry Connect as per building code requirements and best practices. Consult a building professional as required.
2. Windows, Door Openings & Corners: Apply flashing, caulking, WRB and/or air barrier peel and stick products as required. Refer to "Guide to Attaching Exterior Wall Coverings through Foam Sheathing to Wood or Steel Wall Framing" by the Foam Sheathing Coalition (FSC).
3. Typical air barrier locations presented herein are as per common construction practice; confirm/consult with design professional.
4. Typical constructions shown herein. Please refer to design drawings specific to your application. Confirm/consult with design professional prior to installing Quik-Therm products.
5. The information presented herein is based upon data considered accurate. Quik-Therm Insulation Solutions Inc. does not assume any responsibility for any misrepresentation or assumptions the reader may formulate. Please check local building codes prior to installing Quik-Therm products.

General Installation Recommendations Notes

1. General instructions apply to wood frame buildings up to 3 stories. For wood frame buildings from 4 to 6 stories, additional instructions apply.
2. Best Practice Furring Strips: Use 3/4" plywood strips (minimum 2" wide) or 1"x 4" strapping. 3/4" thickness meets cement board installation requirements and provides a code compliant rainscreen.
3. Determine wall framing spacing. SDI is available in 16" or 24" O.C. For heavy cladding materials such as cement board siding and stucco, furring strips must match up with vertical wall studs.
4. Fasteners should be installed as per FSC guidelines. Fasten furring through SDI to framing using appropriate length screws. For screw length and penetration depth relative to SDI panel thickness, refer to FSC. In some instances (coastal climates), treated fasteners and/or furring strips may be required. Consult a design professional.
5. SDI is engineered for vertical furring strip applications. For horizontal applications, consult a design professional.
6. Tape or foam all connections. Use spray foams and/or adhesives compatible with polystyrene foam insulation (e.g. Hilti CF 812 and PL-300). For cold weather applications, purchase cold weather spray foams and adhesives. For best tape application, use a spatula to apply uniform pressure to ensure a good seal between tape and SDI.
7. This product is combustible. Protect from high heat sources. A protective barrier or thermal barrier may be required as specified in the appropriate building code. Consult a design professional.
8. When possible, align strapping grooves over framing members. Secure panel and furring strips to framing members using sufficient length fasteners.



Quik-Therm Insulation Solutions Inc.

ENVELOPE DETAILS

Quik-Therm Solar Dry (SDI)

quiktherm.com (888) 735-3012 (204) 736-3012

QT-SDI-9

NOTES 2

1 1/2" = 1'-0"

Buildings from 4 to 6 Storeys Notes

1. Solar Dry to be installed vertically.
2. Wood furring installed into 3/16" channels, 16" O.C.
3. Refer to CAN/ULC S-101 Fire Test.
4. Screws must penetrate the wall studding as per FSC guidelines.
5. All vertical and horizontal joints should be foamed and taped.
6. Install cladding as per design requirements.

Convection Looping Notes

1. For best R-value performance, convection looping between SDI and substrate must be controlled. Apply a horizontal bead of spray foam or compatible sealant (minimum 1/2" thick) to the top of SDI panels located at the top of walls and the bottom of window framing.
2. For other areas where convection looping may be a concern, please consult with your Quik-Therm representative for appropriate mitigation measures.

Exterior Perforations Notes (Electrical Boxes / hose bibs etc)

Seal all exterior wall electrical boxes and other breaches using conventional code compliant techniques. Apply tapes and sealants to the Quik-Therm™ SDI Connect polymer film in the same manner as 6 mil polyethylene. Optional: Pressure sealed hard plastic electrical boxes with foam gaskets.

Canned Spray Foam Notes

1. Foam together tongue and groove and butt foam to foam connections. Spray foam must be compatible with expanded polystyrene (EPS) rigid foam.
2. Use spray foam to fill cracks and gaps between rigid foam and rigid foam and wood and around windows, doors, etc.
3. DO NOT use spray foam to create an air barrier connection to polymer facers. It DOESN'T create a structural bond.
4. DO NOT use spray foam in lieu of the poly foam gaskets or air barrier sealants.
5. For additional spray foam applications consult with a Design Professional.

Air Barrier Sealants Notes

1. Air Barrier sealants must be compatible with the Quik-Therm™ SDI polymer facers and rigid EPS foam. Recommendations: LePage Quad Max or Henry Air Bloc, or specified by a Design Professional.
2. Liquid applied air barrier sealants can be used to seal window and door nailing fins, etc. to Quik-Therm™ SDI polymer facers. See Installation Guidelines. Refer to Sealant Manufacturer's recommendations.
3. Air barrier sealants are not recommended for foam to foam and wide/large gap connections. Use spray foam to fill large gaps.