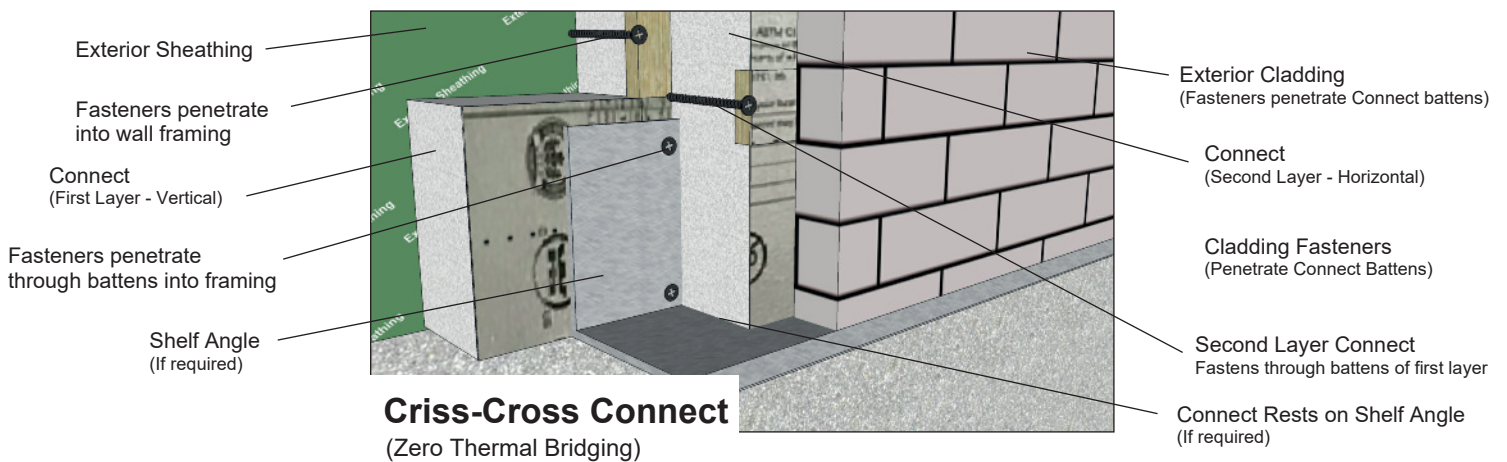
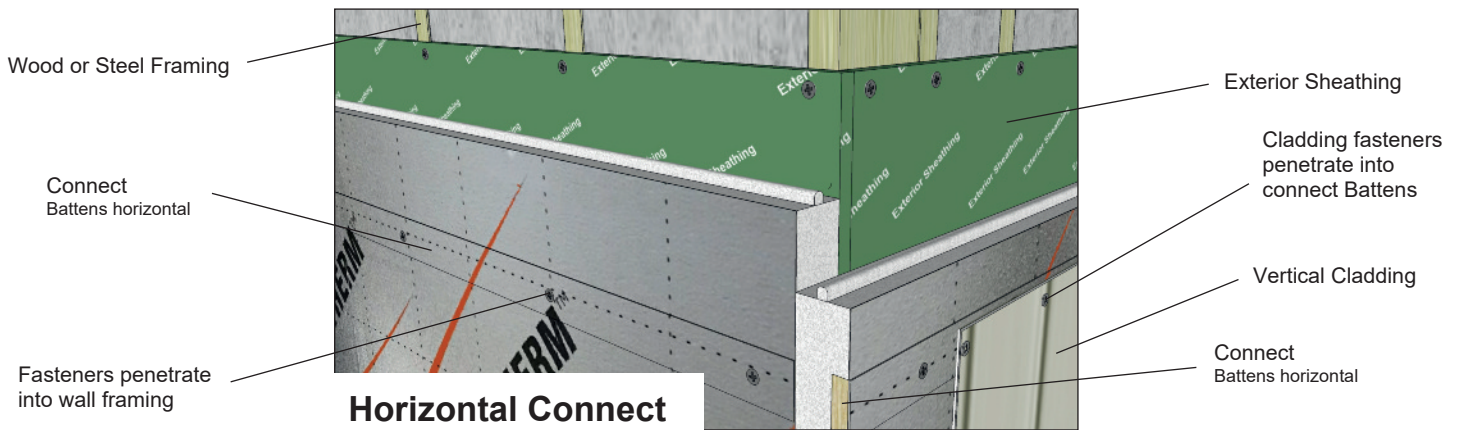
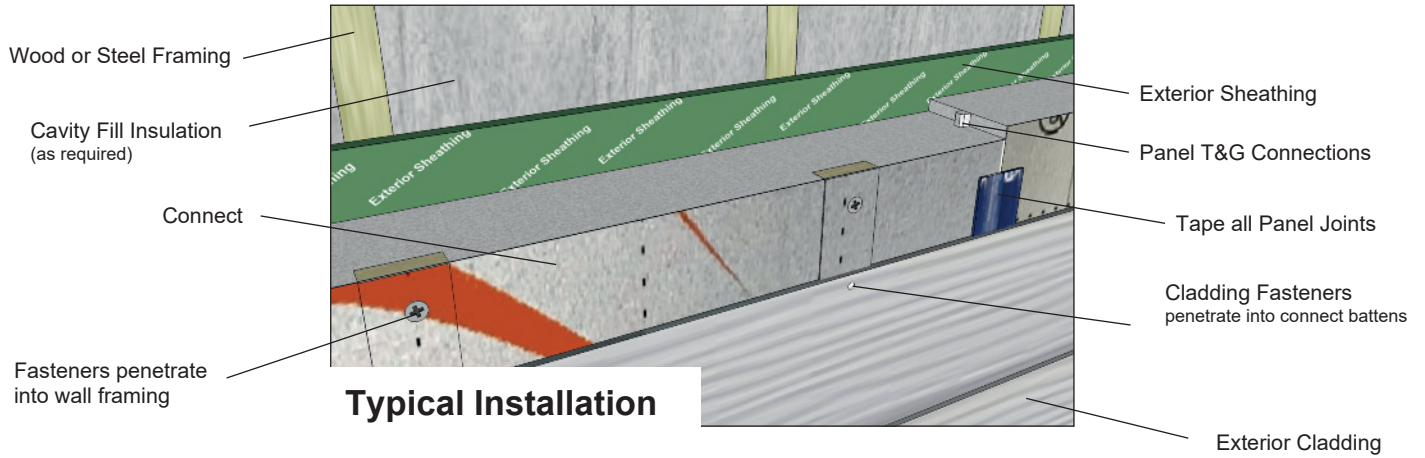
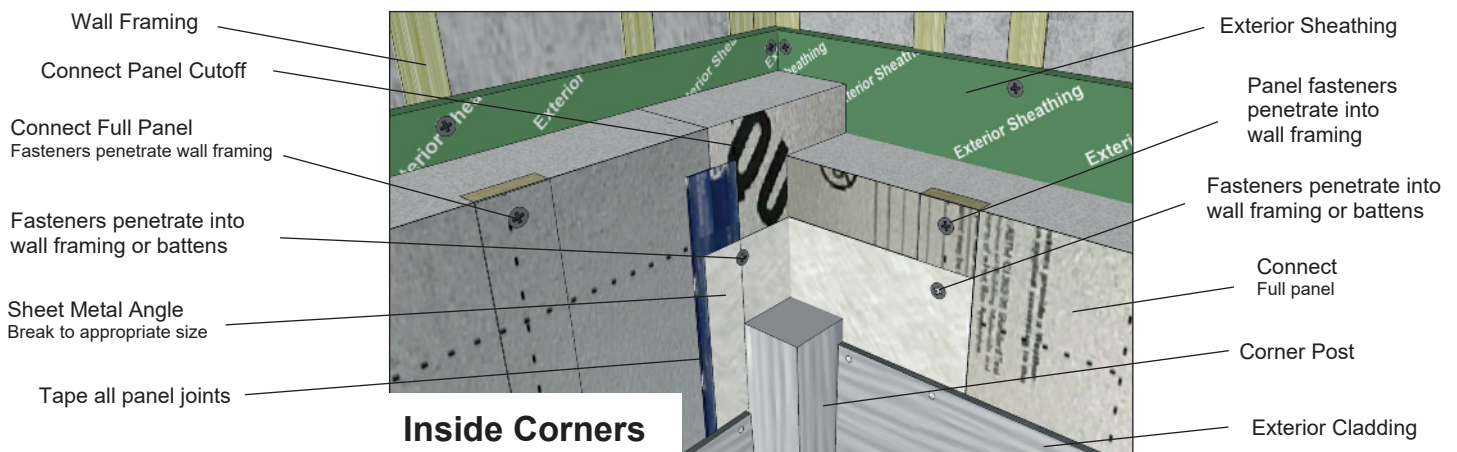
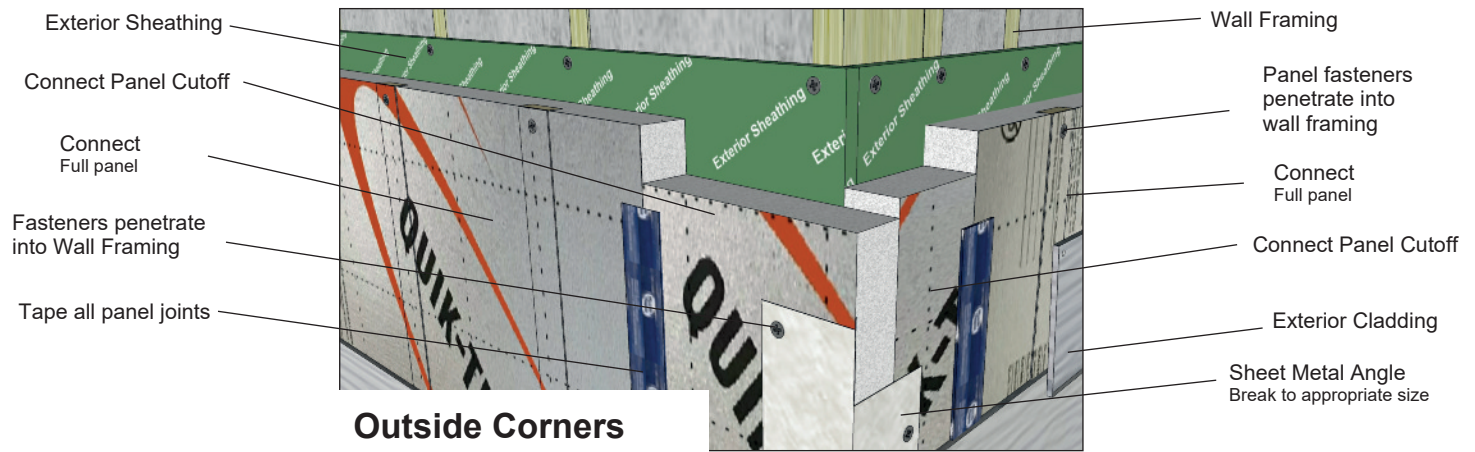
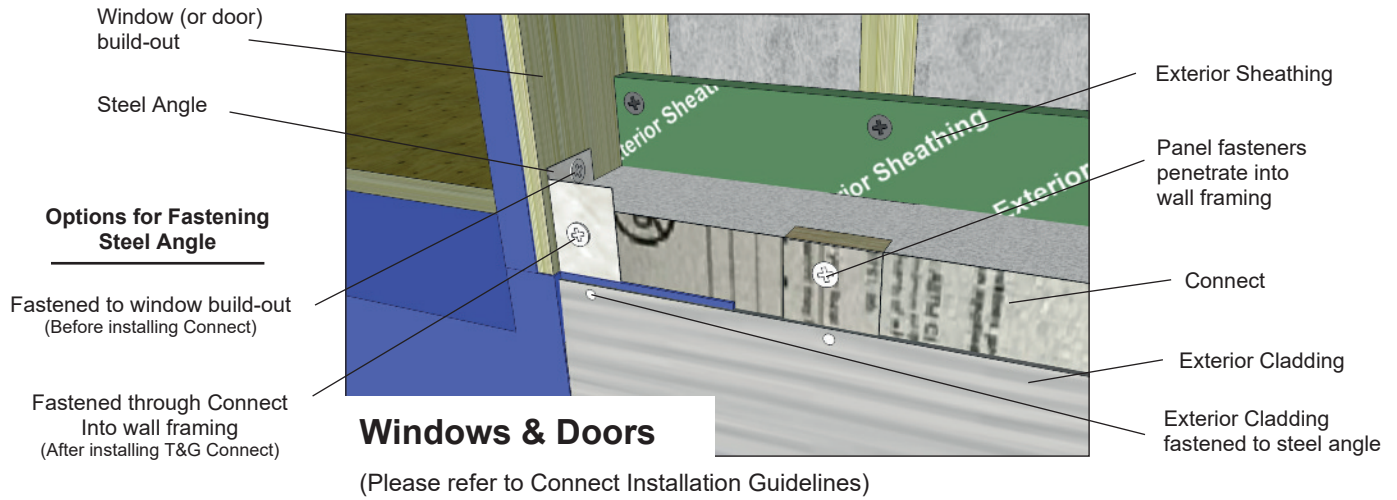


Quik-Therm Insulation Solutions Inc.



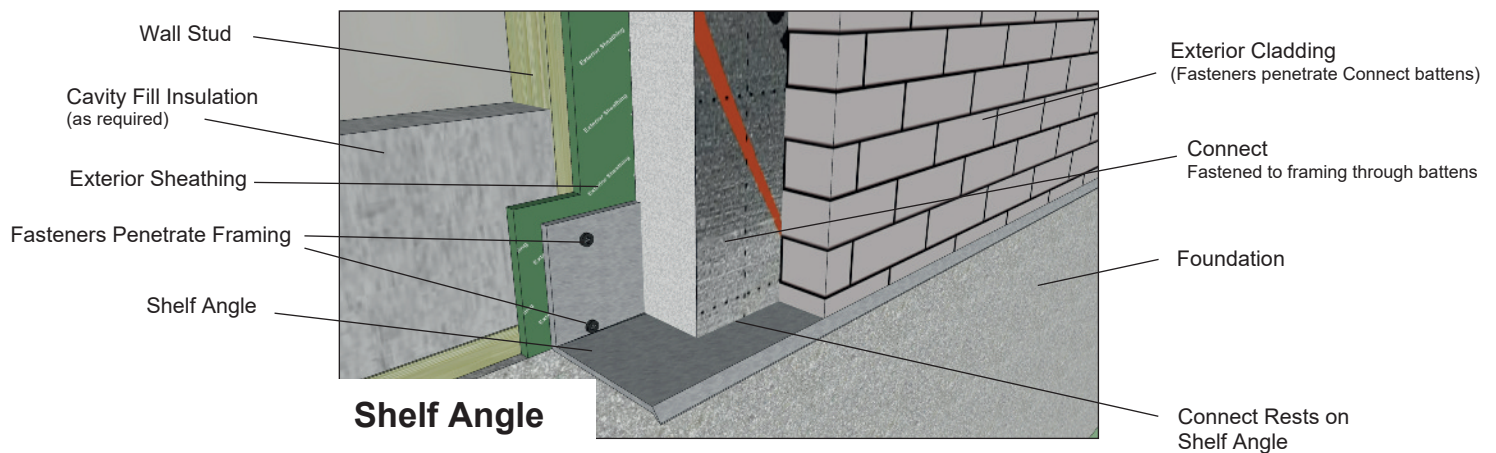
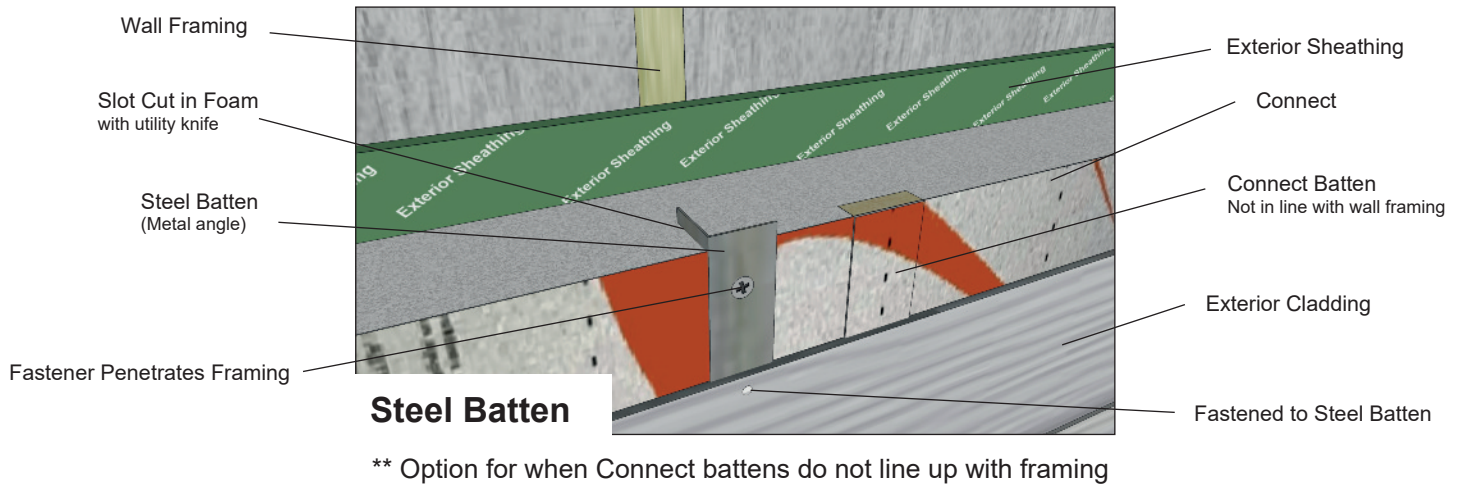
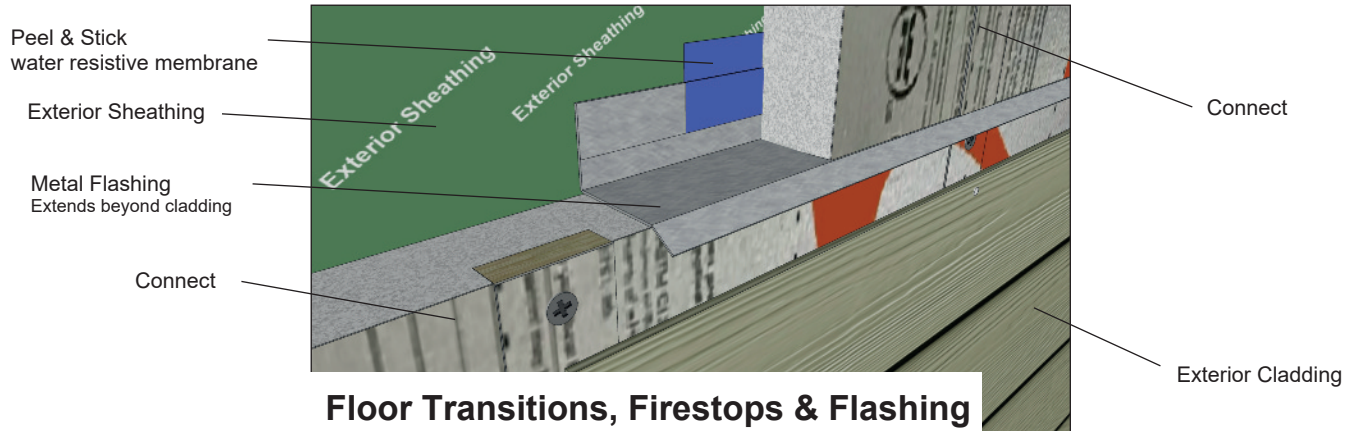
NOTE: Connect shown. For Air-Dry Connect, a building wrap or WRB may be required.
For steel gauge requirements and dimensions check cladding manufacturer's recommendations, building code recommendations or consult with a Design Professional.

Quik-Therm Insulation Solutions Inc.



NOTE: Connect shown. For Air-Dry Connect, a building wrap or WRB may be required.
For steel gauge requirements and dimensions check cladding manufacturer's recommendations, building code recommendations or consult with a Design Professional.

Quik-Therm Insulation Solutions Inc.



NOTE: Connect shown. For Air-Dry Connect, a building wrap or WRB may be required.
For steel gauge requirements and dimensions check cladding manufacturer's recommendations, building code recommendations or consult with a Design Professional.