

The following is a summary installation guide for Quik-Therm T&G Connect. For detailed engineered instructions please refer to "Guide to Attaching Exterior Wall Coverings through Foam Sheathing to Wood or Steel Wall Framing" by the Foam Sheathing Coalition (FSC) found at:

<http://www.nationalgypsum.com/ng/file/FSCdoc.pdf>

The Quik-Therm™ T&G Connect Insulation System has been tested by Canadian Certified Laboratories and is supported by Leading Building Science Engineering. CCMC Listing 13457-L.

NOTE: This product is combustible. Protect from high heat sources. A protective barrier or thermal barrier may be required as specified in the appropriate building code.

Tools and Materials Required

Hammer, Screw Gun and/or Nail Gun, Utility Knife & Blades, Hand Saw, Table and Circular Saw, Spray Foam and adhesive (PL-300) or compatible adhesive with Polystyrene foam, Coated Deck Screws (Appropriate length), Hammer Drill (Concrete Only), 4' Level, Caulking Gun, Measuring Tape.

Installation Recommendations

- Ensure wall is smooth and free of debris.
- Determine wall framing spacing. Typically 16" or 24" O.C. Use the same Connect nailing strip (batten) spacing as wall framing spacing. Connect battens are located 16" and 24" O.C. Battens (strips) should match up with vertical wall studs.
- Using appropriate fasteners, fasten Connect battens through foam insulation to wall stud framing ensuring fastener penetration depth is sufficient for thickness of Connect being used (see FSC Guide). Ensure fastening strip (batten) is facing out (label outwards) towards exterior cladding.
- For stucco and horizontal cement fibre board - vertical batten application is recommended. For horizontal applications please consult a design professional.
- For the application of light weight metal paneling and vinyl siding, QT Connect can be installed horizontal. Additional furring may be required. Consult with a building professional.
- Fasteners should be installed every 6" to 9" apart. Refer to FSC Guide.
- For wood frame buildings over four to six stories, please note additional instructions apply. See reverse.
- Ensure Connect panels fit tightly together. To achieve a code compliant air and moisture barrier, foam and/or tape all joints/seams.
- Use spray foams and/or adhesives compatible with polystyrene foam insulation (i.e. Hilti CF 812 and PL-300). For cold weather applications, purchase cold weather spray foams or adhesives.

Note: QT Connect may be custom cut vertically if stud spacing is not consistently 16" or 24" apart. In these cases the tongue and/or groove will need to be removed. This is acceptable. Make connection to adjacent panel as tight as possible. Foam and/or tape as required.

General Notes: Windows, Door Openings & Corners

There are several ways to install Connect at corners and openings. If desired, custom pieces of Connect may be installed at the beginning or end of the installation process. Option 2, stops thermal bridging through framing members at corners and windows. Quik-Therm considers Option 2 best practice.

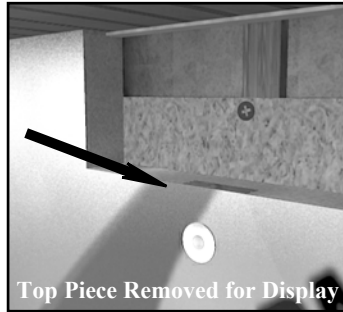
1. Apply flashing, caulking, and peel & stick products to ensure that there is no moisture penetration.
2. Consult with your building professional and refer to peel and stick application recommendations.

Step 1: Determine Stud Spacing

Determine spacing of 16" or 24" to match up with QT Connect nailing strip spacing.

Step 2: Install First Sheet

Starting as close to a corner as possible, install first full sheet of Connect ensuring battens line up with studs. Battens must be facing outwards towards the cladding side (QT label outward). Later, a custom piece of Connect will be installed to fill in the area between the first sheet and corner. Tape or foam connections using manufacturer recommended tape or foam. Ensure Connect is tight to soffit.



Step 3: Installing Sheets

Apply compatible low-expanding spray foam (i.e. Hilti CF 812) to groove/joint or tape. Install next sheet ensuring it is tight to soffit. Tape over or foam seam. For tape application, use a spatula to apply uniform pressure to ensure a good seal between tape and QT Connect.

NOTE: Connect may be custom cut vertically if stud spacing is not consistently 16" or 24" apart.

Step 4: Window & Door Openings

Two options exist to deal with window and door openings. Consult with your building professional to determine which method is most appropriate.

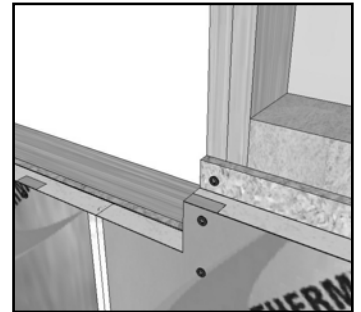
Option 1:

Construct the appropriate size build-out. The size of the build-out is relative to the thickness of the Connect panel. Install QT Connect flush to build-out. Spray foam between build-out and Connect.



Option 2:

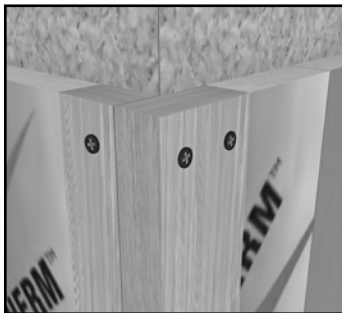
Cut appropriate width pieces of Connect including one batten. Ensure batten is directly over wood frame. Fasten through batten into framing.



Step 5: Installing Corners

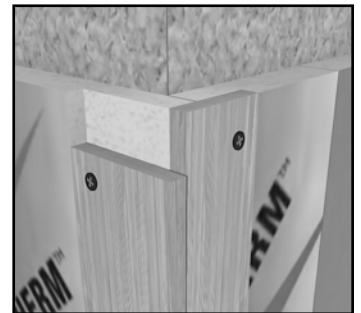
Option 1:

Construct the appropriate size build-outs at corner. The size of the build-out is relative to the thickness of the Connect panel. Install QT Connect flush to build-outs. Foam between build-out and Connect.



Option 2:

Cut appropriate width pieces of Connect including one batten. Ensure batten is directly over frame. Fasten through batten into framing.



Air Barrier - General Notes

Quik-Therm T&G Connect meets code compliancy as an air and/or vapour barrier and a radon barrier. As part of the air barrier, Connect can be attached to building wrap, peel and stick and poly. Ensure all joints and corners in insulation are spray foamed and/or taped.

- Although a wood frame building is shown, these general instructions are also applicable to metal framed structures.
- In all cases, adhere to local building codes, manufacturer instructions and best practices as outlined by a building design professional.
- See Connect Window and Door Air Barrier Detailing.

4 to 6 Story Buildings: Installation Instructions

These installation instructions must be adhered to for 4-6 story buildings:

- 2" Type 2 Connect installed vertically.
- #10 x 4-3/4 inch GRK R4 screws spaced 8" O.C. fastened through the battens directly into the wall stud.
- Screws must penetrate the wall studding sufficient to accommodate the cladding. See FSC.
- All vertical and horizontal joints must be foamed and/or taped.
- Install cladding as per design requirements.



1 888 735 3012

Quik-Therm Connect Air Barrier/Finishing Details*

* General Notes:

Although a wood frame building is shown, these general instructions are also applicable to metal framed structures.

The techniques shown below are applicable for window and door frame openings.

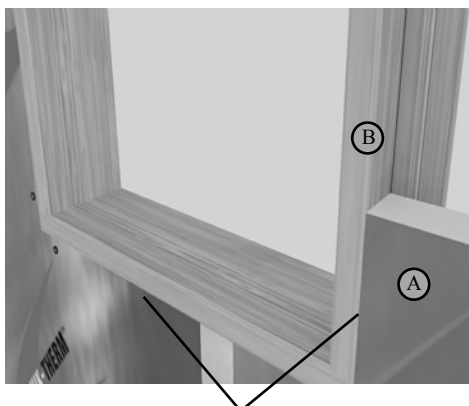
Quik-Therm meets air, vapour and radon barrier requirements when installed properly as part of the overall building system. All connections must be spray foamed and/or taped.

Apply flashing, caulking and peel & stick products to be installed ensuring there is no air or moisture penetration. Consult with local building professional and refer to peel & stick manufacturer recommendations.

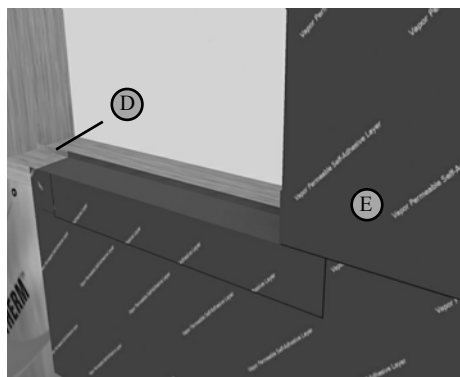
Adhere to local building codes, manufacturer instructions and best practices as outlined by a building design professional.

Window/Door Opening Finishing Details

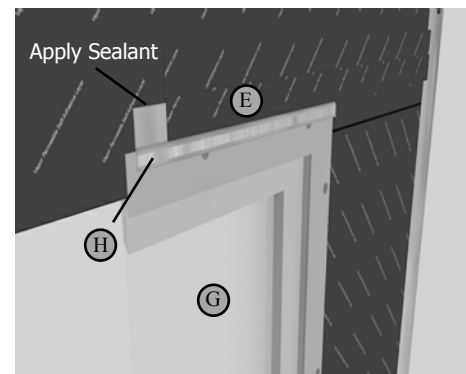
- Install Quik-Therm insulation (A) against window/door framing build-out (outie). (B)
- Plane sill (C) to slope downwards and outwards.
- (Windows) Install metal angle (D) at sill as per manufacturer recommendation.
- Install peel & stick water resistive air barrier membrane (E) around openings and over flashing as per manufacturer's instructions and local building codes. Ensure membrane adheres to all surfaces.
- Install wood spacers (shims) (F) on sill to provide drainage plane to outside.
- Install window (G) as per manufacturer's instructions and local building codes.
- Install flashing (H) above window as per manufacturer's recommendations. Apply sealant along top edge above flashing and down terminations.



Quik-Therm Butts Against Framing



Water resistive Air Barrier Membrane Installed



Metal Flashing Above Window



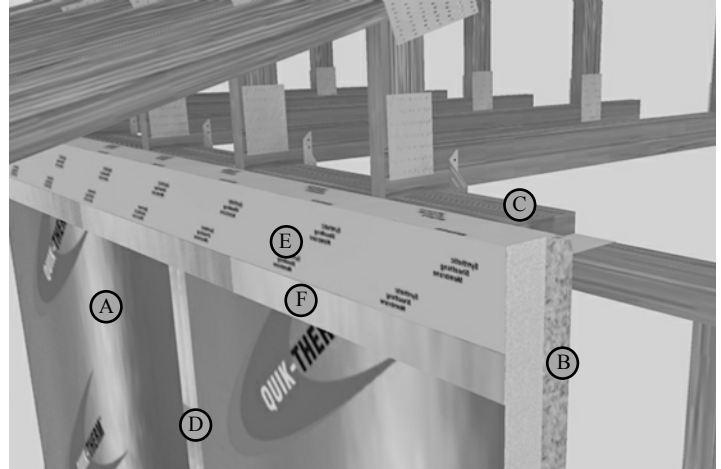
1 888 735 3012

Quik-Therm Connect Air Barrier/Finishing Details*

Wall Finishing Details

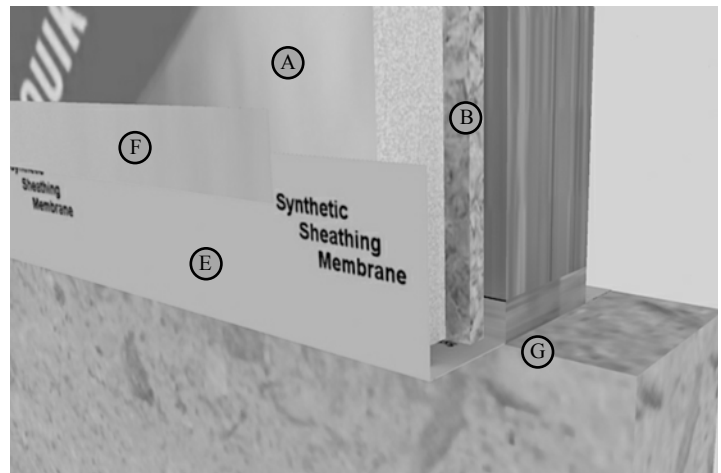
Top of Wall (Synthetic Sheathing Membrane extending between top plates)

- Install Quik-Therm insulation (A) against sheathing (B) up flush with top plate (C).
- Ensure all joints between insulation sheets are foamed and taped. (D)
- Drape SSM (E) over Quik-Therm.
- Apply Quik-Therm approved tape (F) over joint between SSM and insulation to complete the seal.



Bottom of Wall (Synthetic Sheathing Membrane extending between Bottom plate & concrete)

- Install Quik-Therm insulation (A) against sheathing (B) flush with top of concrete wall (G).
- Ensure all joints between insulation sheets are foamed and taped.
- Drape SSM (E) over Quik-Therm.
- Apply Quik-Therm approved tape (F) over joint between SSM and insulation to complete the seal.



* For additional information and instructions, please refer to general notes.