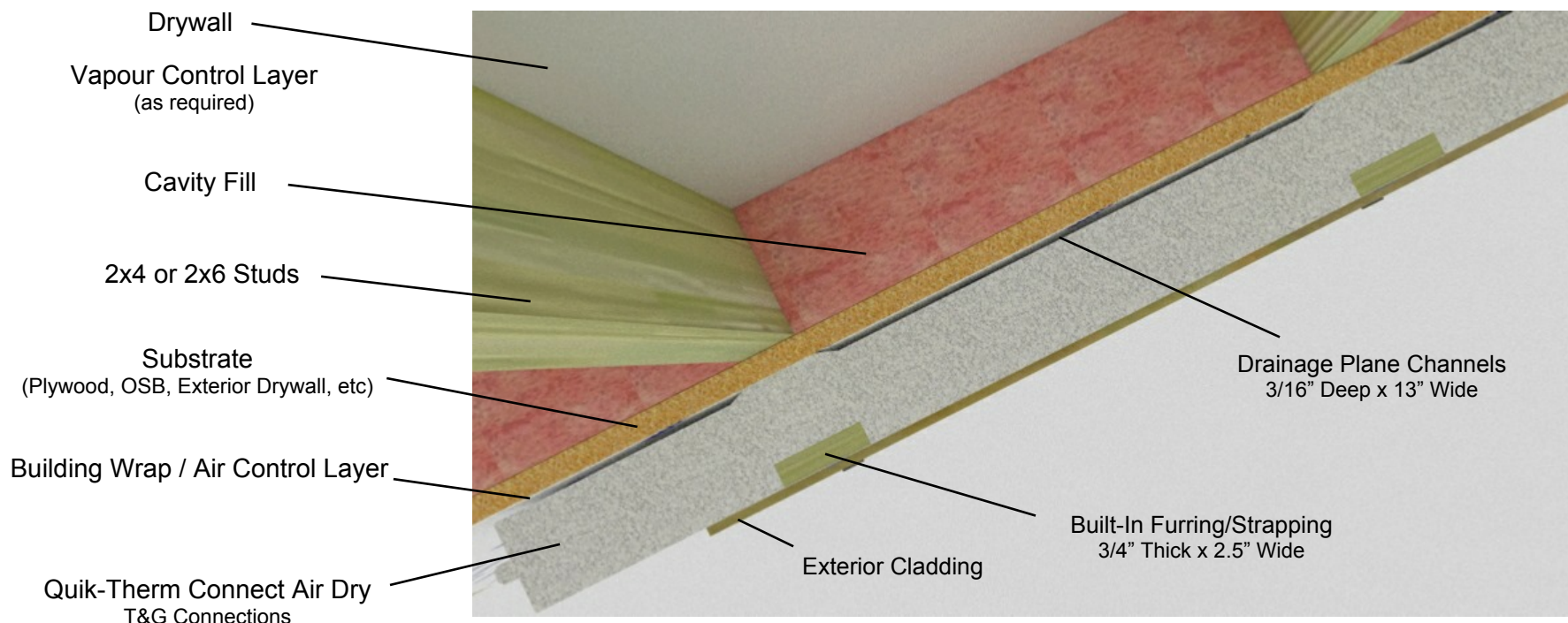




Quik-Therm T&G Connect Air Dry



ASTM C1363 Effective R-Value Testing

ASTM C1363 - ATI / Intertek

Wall Assembly Description

- 1363 - Drywall, 2X4 empty wood cavity, OSB, 2" Connect Air Dry, cement board (Test Purposes Only)
- 1363 - Drywall, 2X4 empty wood cavity, OSB, 3" Connect Air Dry, cement board
- 1363 - Drywall, 2x4 wood frame, R-12 fiberglass, OSB, 2" Connect Air Dry, cement board
- Estimated - Drywall, 2x4 wood frame, R-12 fiberglass, OSB, 3" Connect Air Dry, cement board
- Estimated - Drywall, 2x6 wood frame, R-20 fiberglass, OSB, 3" Connect Air Dry, cement board

Eff. R-Value *
13.2
17
23.1
28
34

* The recommended wall assemblies listed exceed the requirements of Table 9.25.5.2 of the code for most jurisdictions. For breathable wall assemblies that require a drainage plane and rain screen, please refer to Quik-Therm Solar Dry.

NOTE: Substitute mineral wool insulation for fiberglass - add an effective R-1 to the assembly.