



Quik-Therm Warm Floor is a high density rigid foam sub-floor Insulation designed and engineered for the top side of un-heated concrete floors.

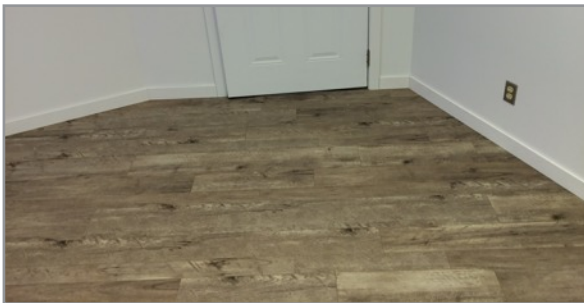
Finished materials such as laminate and engineered flooring are easily installed directly on top of Quik-Therm Warm Floor without the need for adhesives and fasteners.

Quik-Therm Warm Floor provides superior comfort and saves energy dollars. It is less expensive than most sub floor products and faster and easier to install.

Quik-Therm Warm Floor does not produce ozone depleting off gasses. It may contain up to 15% recycled expanded polystyrene (EPS). Warm Floor improves lifestyles and comfort while preserving natural resources and the ecosystem.



- Supports heavy loads up to 4000 lbs/ft<sup>2</sup>
- Effective R-value R-3.5
- Mold and mildew resistant
- Excellent sound dampening characteristics
- Environmentally responsible
- Saves energy dollars



## Features & Highlights

- **FAST & EASY TO INSTALL**- 4' x 4' by 7/16" (11 mm) thick (nominal) high density foam panels lay in place and are sealed together using a specially designed polymer reflective tape.
- **WARMS UP CONCRETE FLOORS** - Continuous insulation increases the comfort of concrete floors by up to 7 degrees.
- **4 in 1 CONCRETE FLOOR INSULATION** - Radon, Vapour and Air Barrier and Continuous High Performance Insulation - ALL IN ONE.
- **MOISTURE RESISTANT**- Closed cell high density EPS foam panels are laminated on two sides with impermeable high tech polymer facers.
- **MAINTAINS MAXIMUM CEILING HEIGHT** - Less than 1/2" thick, plus the thickness of flooring.
- **FLEXIBLE & DURABLE** - Does not easily chip crack or break. Panels can be bent, twisted and walked on without damage.
- **HEALTHY LIVING ENVIRONMENT** - NO formaldehyde; moisture and mold resistant.

## Typical Physical Properties

- Supports up to 4000 lbs/ft<sup>2</sup>
- Tested and approved as a code compliant air and vapour barrier.
- When perimeter is properly sealed, Warm Floor meets radon barrier requirements.



# Installation Guidelines

The following instructions are designed for DIY. For best results, read and understand these instructions before beginning. A Warm Floor overview video can be viewed by [clicking here](#).

## Materials Supplied by Quik-Therm

- Warm Floor Insulation Panels
- Approved Tape for Sealing Joints

## Tools Required

- Measuring Tape
- Utility Knife & Blades

## Quik-Therm Insulation Solutions Inc.

1 888 735 3012

[www.quiktherm.com](http://www.quiktherm.com)

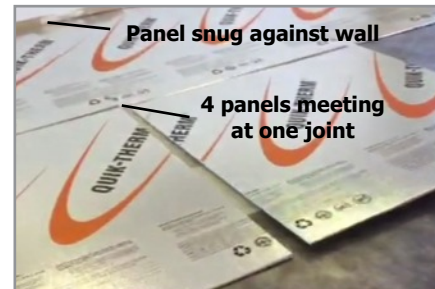
## Instructions:

### Step 1: Prepare Floor Area

- Warm Floor is designed for the top side of dry floors. If floor is damp, wet or shows signs of condensation, repair before installing Warm Floor.
- Sweep/clean floor area to remove all dust and debris.
- Repair floor as required to provide a relatively smooth, level surface for Warm Floor to be installed over.

### Step 2: Install Full Panels

- Starting at a corner, lay out as many full size Warm Floor panels as possible.
- Ensure panels are snug against each other, as well as the perimeter walls.
- Align panels whenever possible to allow easier taping in step 4.



### Step 3: Cut and Fit Remaining Panels

- Using a utility knife, cut and fit remaining panels along walls, in doorways, under heaters, etc.
- Ensure panels are snug against each other, as well as the perimeter walls.



### Step 4: Tape Panel Seams

- Tape all seams between panels using Quik-Therm approved seam tape.



### Step 5: Seal Along Perimeter Walls

- Seal along perimeter walls using a foam compatible sealant as per local building codes.

## Important NOTES:

1. For Quik-Therm Warm Floor to meet code compliancy as a radon barrier, the perimeter edges must be sealed with a compatible foam adhesive such as PL 300.
2. A properly taped and perimeter sealed system is mandatory if Quik-Therm Warm Floor is to perform as a code compliant air and vapour barrier.
3. For finished materials such as carpet, hardwood flooring (2.5" or narrower), vinyl and ceramic tiles, a rigid wood underlay is recommended between Warm Floor and finished flooring material.