

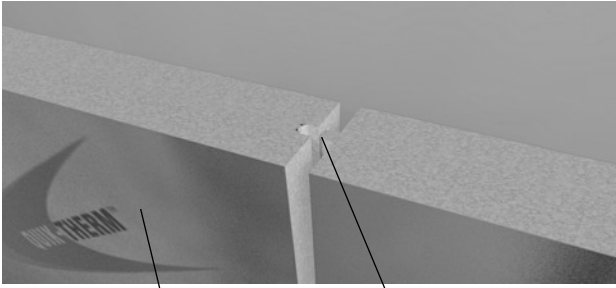


1 888 735-3012
quiktherm.com

TECHNICAL DATA SHEET

Quik-Therm MPI

ID. QT MPI
March 2016



Tongue & Groove Connections
(Panel Thickness 5 cm (2") or thicker)
1.3 cm x 1.3 cm (1/2" x 1/2")

MPI Panel

1.2 m wide x 2.4 m long (4' x 8')
2.5 cm to 15 cm (1" to 6") Thick



MPI Rolls

1.2 m x 22 m (4' x 72')
12.7 mm (1/2") thick

Meets CAN/ULC S701-05 / CCMC #13393-L and 13457-L

Quik-Therm Multi-Purpose Insulation (MPI) is a high performance continuous rigid insulation product consisting of superior closed cell, lightweight and resilient expanded polystyrene (EPS) layered on two sides with advanced metallic polymer facers. MPI is a multi-functional, durable and flexible insulation which can be used in a wide variety of building insulation applications. Depending on thickness, MPI can be shaped around corners, tanks and large pipes. MPI is available in 1.3 cm (1/2") rolls and sheets. Sheets are manufactured in variable thicknesses and densities. On exterior walls, MPI is ideal for the application of lightweight claddings such as steel and vinyl siding. MPI is an all in one air, vapour and radon barrier.



Tested By Canadian Accredited Laboratories. Supported By Building Science Engineering

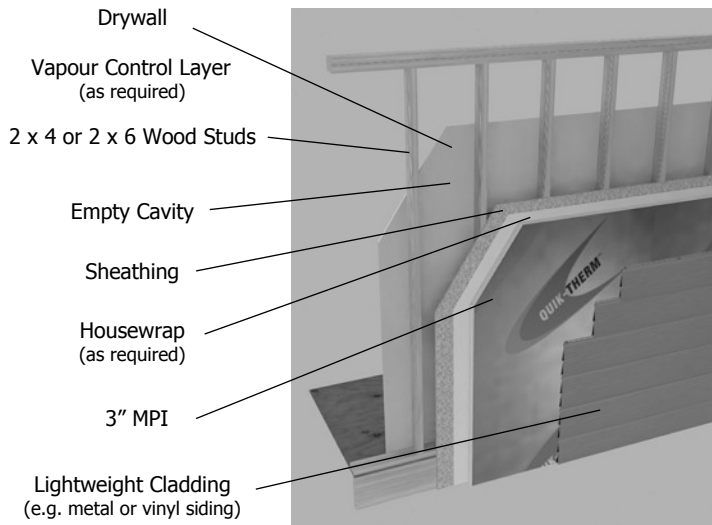
- Effective R-value tested to ASTM C1363 "Standard Test Method for Thermal Performance of Building Materials and Envelope Assemblies".
- Tested to ASTM E96 "Standard Test Method for Vapor Transmission of Materials". Meets code compliancy as a vapour, air and/or radon barrier when connections are properly taped or foamed together.
- Tested to CAN/ULC S101-14 "Standard Methods of Fire Endurance Tests of Building Construction and Materials". Up to six story wood frame. Maximum 5 cm (2") thick MPI. Special fasteners and installation details apply.

NOTE: For typical wall designs and Effective R-value ratings, please see back of page.

Characteristic	Units	Nominal Value	Test Method
Dimensional Stability - Maximum Linear Change	%	1.5	ASTM D2126
Length Tolerance	mm (in)	±3.2 (±0.125)	—
Width Tolerance	mm (in)	±1.6 (±.063)	—
Water Vapour Transmission	perms	<1.0	ASTM E96
Density (Type 1)	kg/m ³ (lbs/ft ³)	16 (1.0)	ASTM D1622-03
Compressive Strength (Type 1)	kPa (psi)	87 (12.6)	ASTM D1621-04a
Long Term Thermal Resistance (LTTR)	Thermal Resistance Remains Stable Over Life of Service		
Flexural Strength (Type 1)	kPa (psi)	202 (29.3)	ASTM C203-05
Limiting Oxygen Index	%	26	ASTM D2863-97
Flame Spread	—	250	CAN/ULC - S102.2
Smoke Developed	—	410	CAN/ULC - S102.2

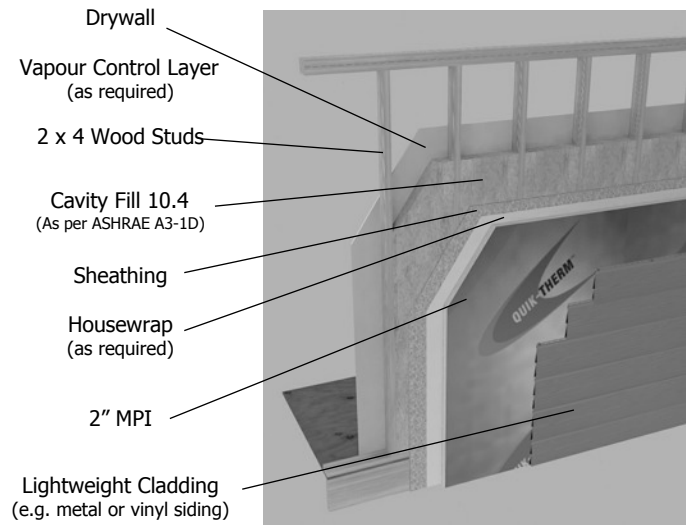
The information on this Technical Data sheet is based upon data considered accurate. Quik-Therm Insulation Solutions Inc. does not assume any responsibility for any misrepresentation or assumptions the reader may formulate.

Code Compliant Part 9



Effective R-17

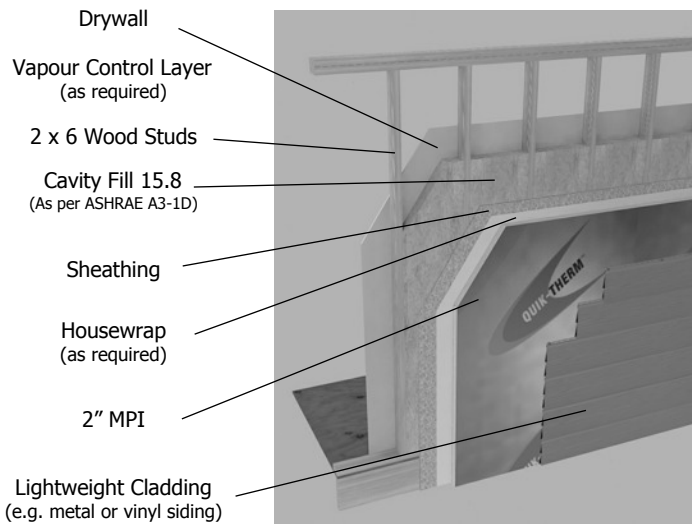
Code Compliant for Zones 5, 6, 7, 8



Effective R-22.1

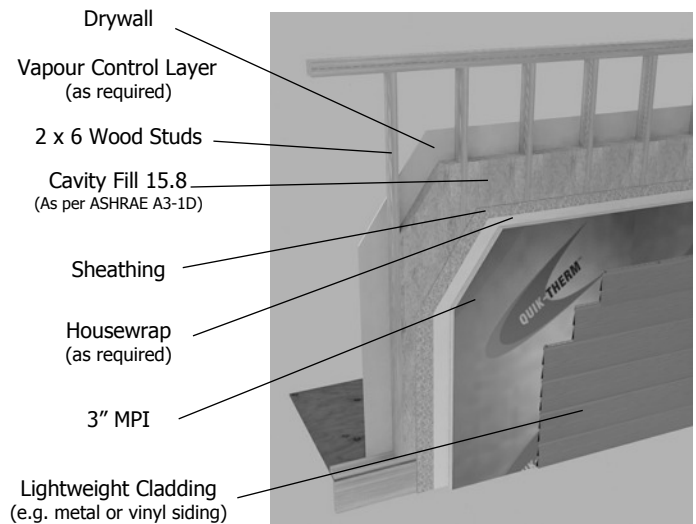
Code Compliant for Zones 5, 6, 7, 8

Code Compliant Part 3 / NECB 2011



Effective R-28.3

Code Compliant for Zones 5, 6, 7



Effective R-32.8

Code Compliant for Zones 5, 6, 7, 8